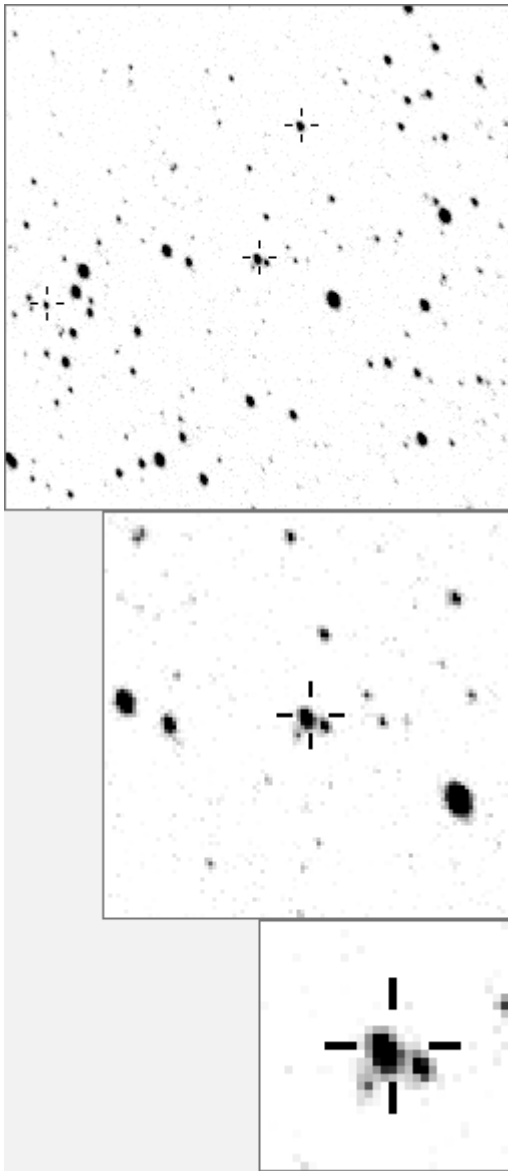


a03381



variables & brighter stars	
.	O 3381 v
.	a 606
.	b 1037
. m	c 1301
.	d 1746
.	e 1973
. b	f 2615
. c g . . O	g 2680
. n e a . h	h 3050
.	i 3634 v
.	j 3770 v
. k	k 4484
. f	l 4528
j d	m 5686 v
. l	n 14635 v

. h g	O 3381 v
.	a 606
.	b 2680
. e	c 8074
. f	d 14961
. n	e 16778
b k l	f 18300
. c O d . i	g 19334
. j	h 26516
.	i 32183
. a	j 33480
.	k 34055
.	l 34596
. m	m 44628
.	n 47364

Bitmap sizes are 251, 101 and 31 pixels square, South up. The keys to the right refer to the 1st two bitmaps. The numbers in the key are those in my catalogue 'starlistA'. Stars marked with a cross have been found to be variable.

Data and comments on star a03381

SWid: a03381 / **USNO id: 1376 486917 / other id:**

Co-ordinates, x,y in image z1051: 2801.5 3803.3

J2000 sky co-ordinates: 21 11 19.05 +47 38 47.79

CMC r'magnitude and 2MASS J,H,K magnitudes: 11.998 10.058 9.038 8.032

USNO B1.0 magnitudes, B1,R1,B2,R2,I2: 13.16 11.44 13.09 11.59 10.99

Misc comments :

a little variable and erratic, low late in 2004, prox with 14961. At 5 dia it moves about 1.02 mag with interesting dips apparently. Moves 1.05 mag at dia 3, both to ref 58. To close ref 606 it's cleaner but still with sharp dips. To 101 magm 10.8, magr 1.0

Comparison reference star(s) co-ordinates:

a00058: 21 9 59.1 +47 44 43.77

a00101: 21 10 23.44 +47 30 4.9

a00606: 21 11 28.03 +47 39 33.78

colour temperature estimate: 6403K

Another dippy star!

Reminder:

All dates, JD and HJD are from Jan 1st 2000

season 1: dates 1316 to 1553 is 9/8/2003 to 3/4/2004 (a)

season 2: dates 1696 to 1838 is 23/8/2004 to 12/01/2005 (z)

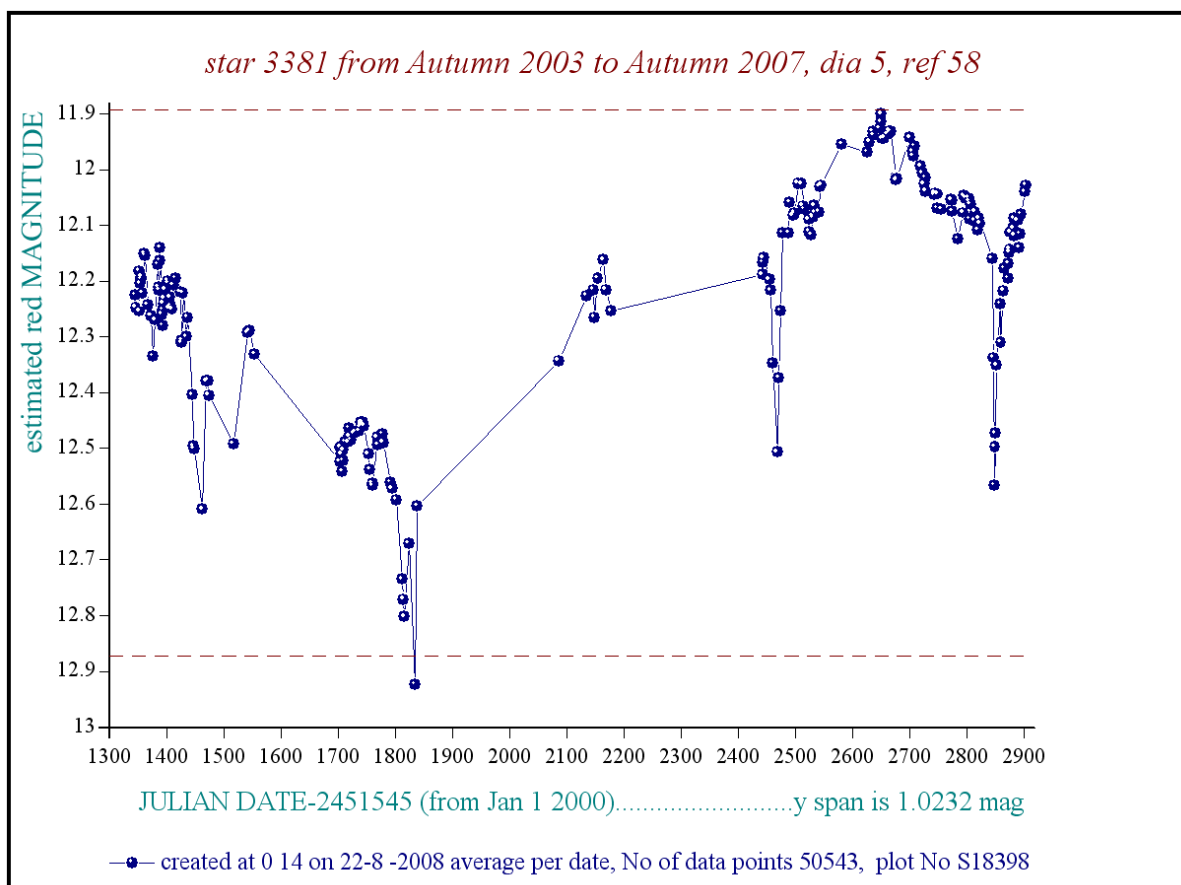
season 3: dates 2085 to 2177 is 16/9/2005 to 17/12/2005 (y)

season 4: dates 2442 to 2755 is 8/9/2006 to 19/7/2007 (w)

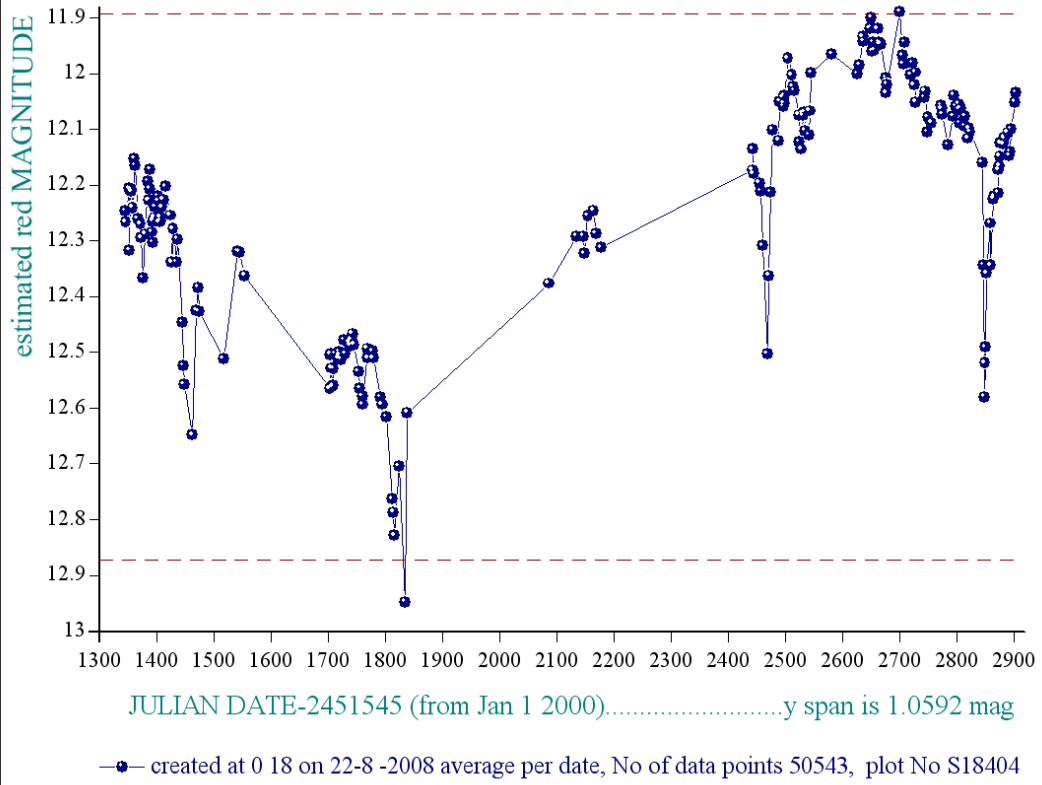
season 5: dates 2772 to 2903 is 4/8/2007 to 13/12/2007 (v)

season 6: dates 2930 to 3266 is 9/1/2008 to 10/12/2008 (u)

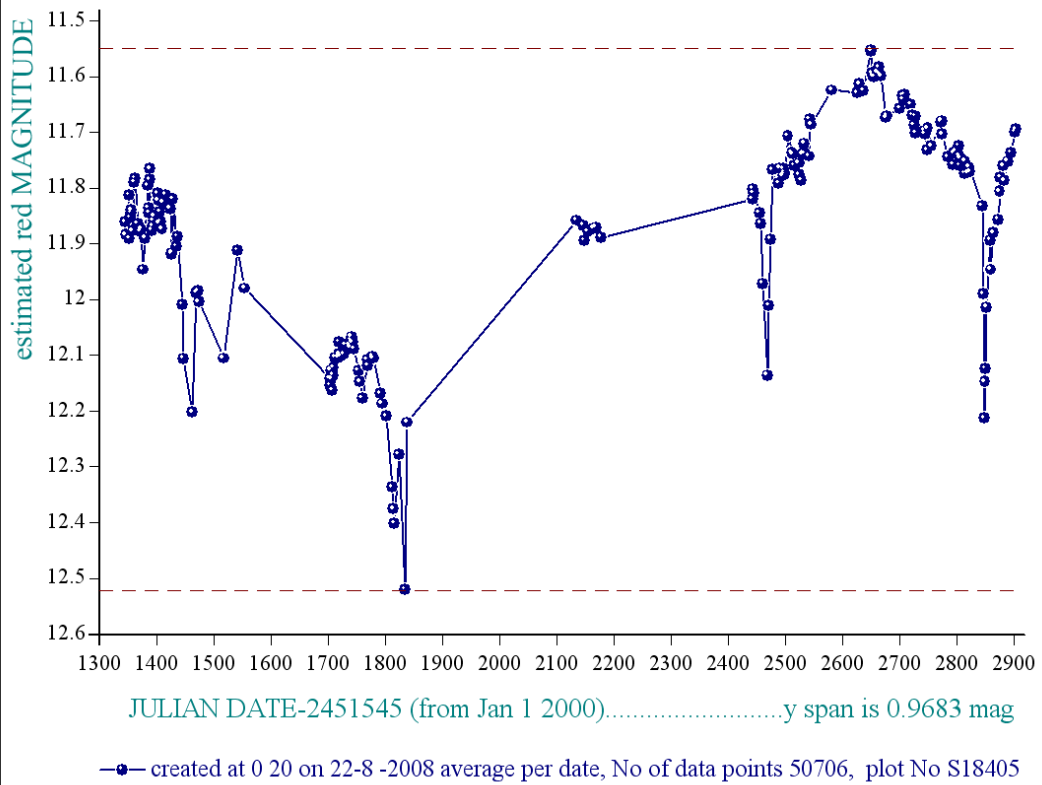
season 7: dates 3403 to 3539 is 26/4/2009 to 10/9/2009 (t)



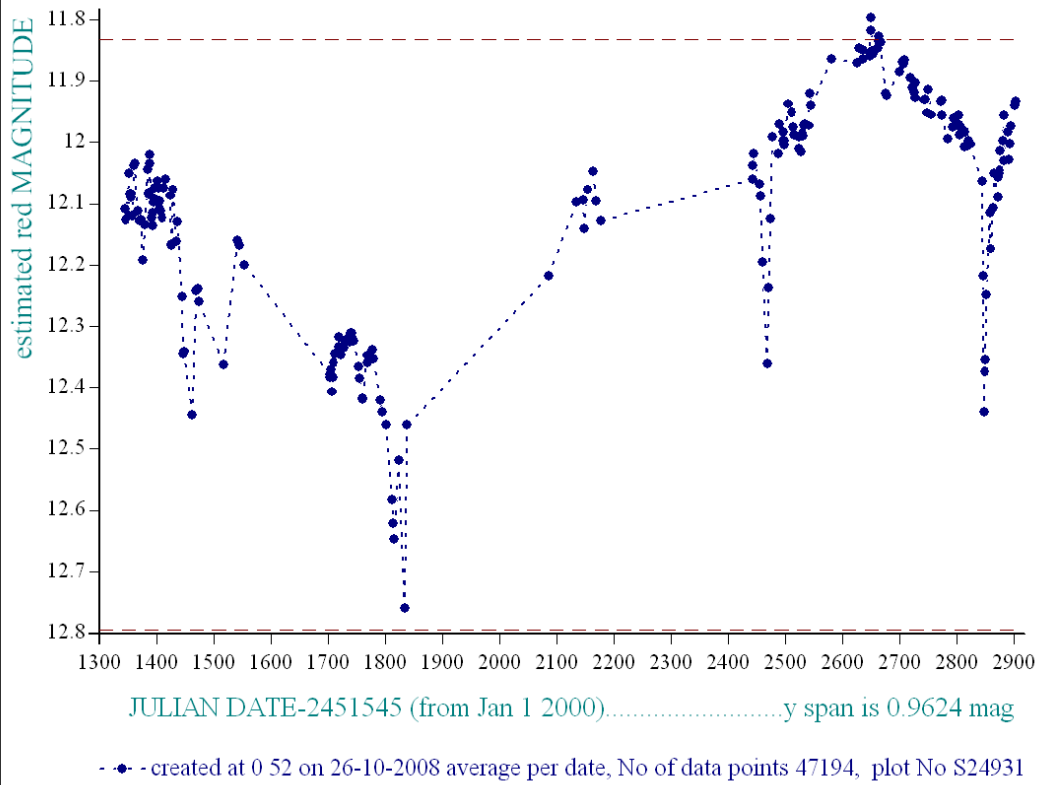
star 3381 from Autumn 2003 to Autumn 2007, dia 3, ref 58



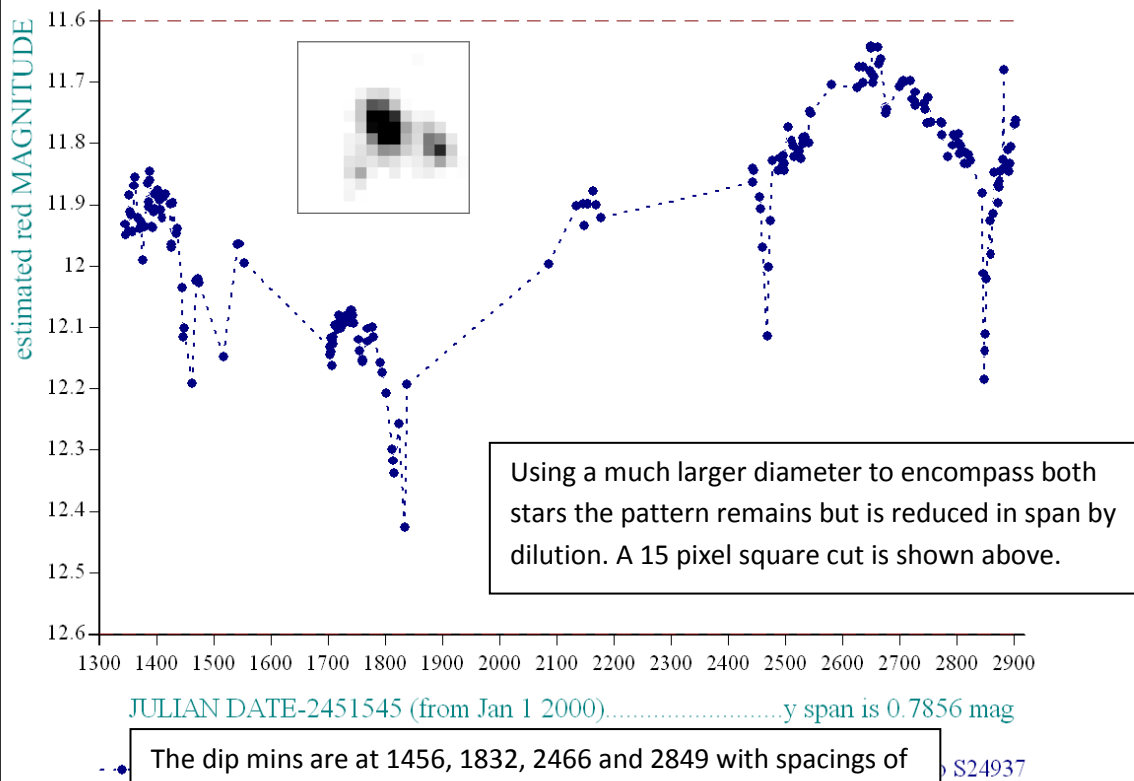
star a03381, refstar a00606 dia 8

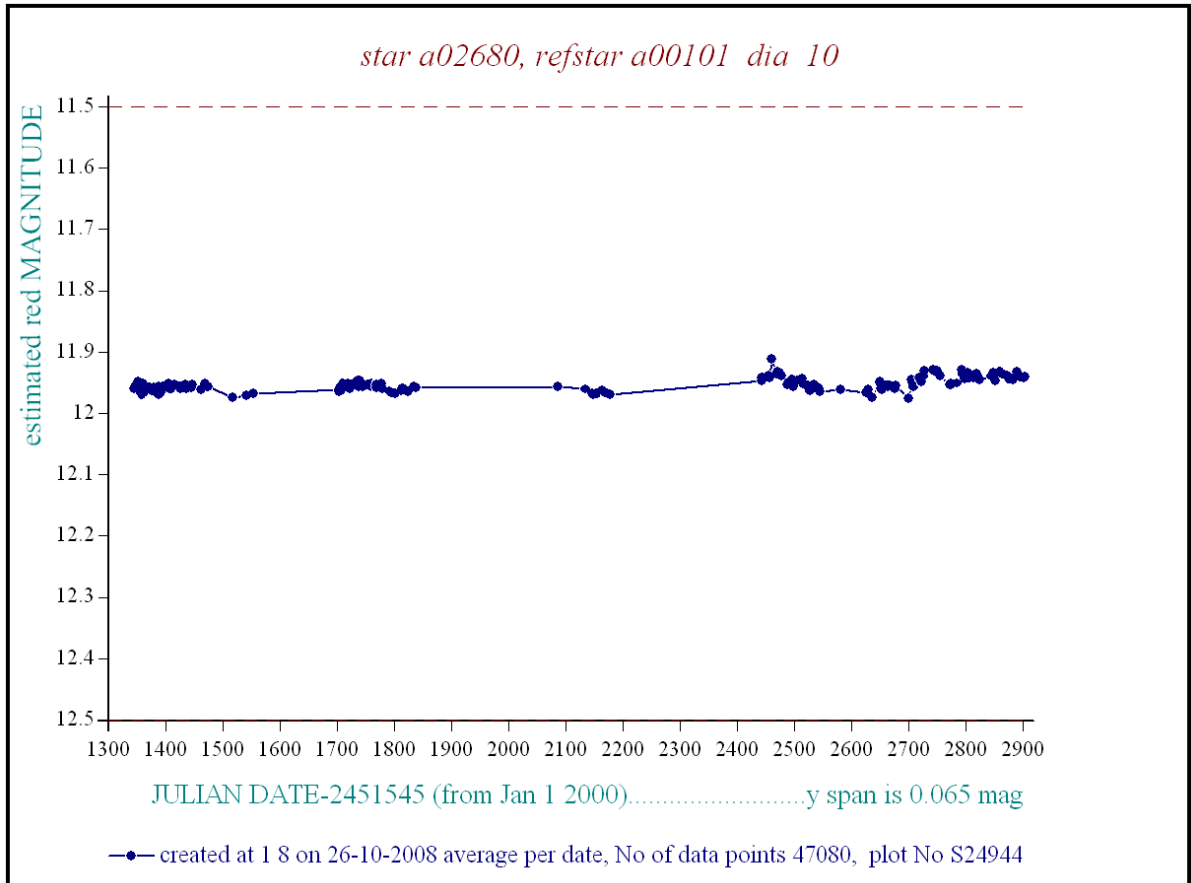


star 3381 from Autumn 2003 to Autumn 2007, dia 8, ref 101



star 3381 from Autumn 2003 to Autumn 2007, dia 15, ref 101





For comparison here is a plot on a comparable scale of a star near to 3381 (left in pic above) and to the same reference