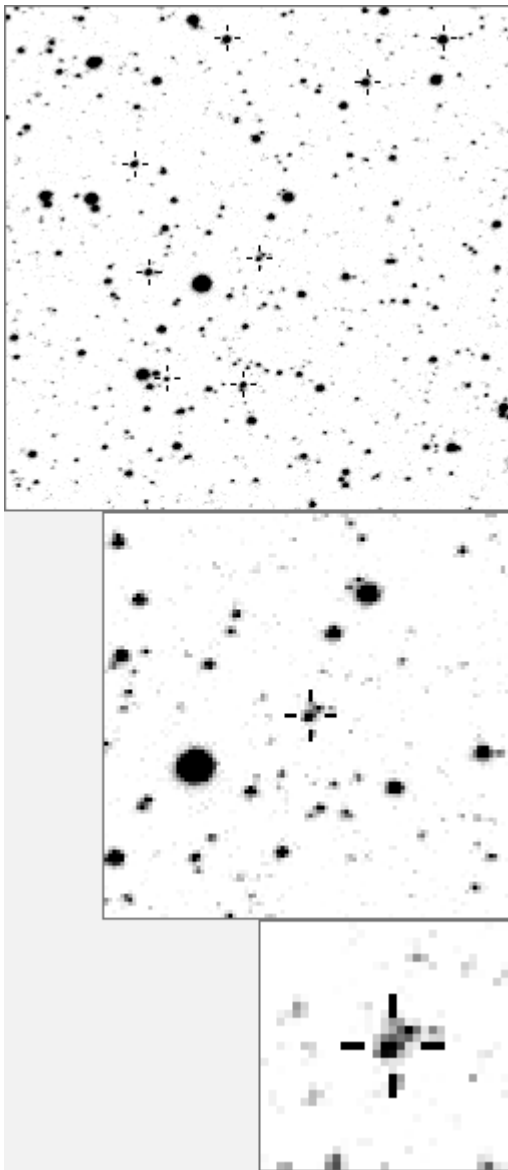


a14177



variable and brighter stars			
. e h f .	O 14177 v		
. . . c	a 47		
. g	b 683		
.	c 685		
. k	d 703		
. . . b	e 1288 v		
.	f 2121 v		
. i . . . O	g 3542 v		
. a	h 3879 v		
.	i 5950 v		
m . . . d	j 6846 v		
. n . . . l	k 7031 v		
.	l 8516 v		
.	m 16460 v		
.	n 17345 v		

.	O 14177 v		
j .	a 47		
.	b 1366		
.	c 4221		
.	d 4948		
g . . . l	e 5768		
.	f 6485		
.	g 7240		
.	h 10620		
.	i 11529		
. . . a	j 11635		
. . . m . . . k e	k 13514		
.	l 14611		
c . . . n . . . i	m 17797		
.	n 19512		

Bitmap sizes are 251, 101 and 31 pixels square, South up. The keys to the right refer to the 1st two bitmaps. The numbers in the key are those in my catalogue 'starlistA'. Stars marked with a cross have been found to be variable.

Data and comments on star a14177

SWid: a14177 / **USNO id: 0 0 / other id:**

Co-ordinates, x,y in image z1051: 1277.2 1789.5

J2000 sky co-ordinates: 21 5 25.29 +46 18 58.3

CMC r'magnitude and 2MASS J, H, K magnitudes: 14.188 9.904 8.91 8.54

USNO B1.0 magnitudes, B1, R1, B2, R2, I2: 0 0 0 0

Misc comments :

This star is a bit of a messy meld but can be readily measured as a pair with a big enough circle, 10 is fine or, much harder, as an individual star. Although the results cannot be claimed as accurate a plot (see below) done with a 3 by 3 box of pixels does prove

that it is the brighter part of the meld that varies. The curve expectedly has a larger span but is surprisingly similar to the ones that include both stars. For this plot the reference star is still being measured at a diameter of 10.

Approx magm to 47 is 13.65, magr about 0.53m

Comparison reference star(s) co-ordinates:

a00047: 21 5 18.78 +46 19 26.98

a01366: 21 5 28.77 +46 17 45.53

More years needed

Reminder: **All dates, JD and HJD are from Jan 1st 2000**

season 1: dates 1316 to 1553 is 9/8/2003 to 3/4/2004 (a)

season 2: dates 1696 to 1838 is 23/8/2004 to 12/01/2005 (z)

season 3: dates 2085 to 2177 is 16/9/2005 to 17/12/2005 (y)

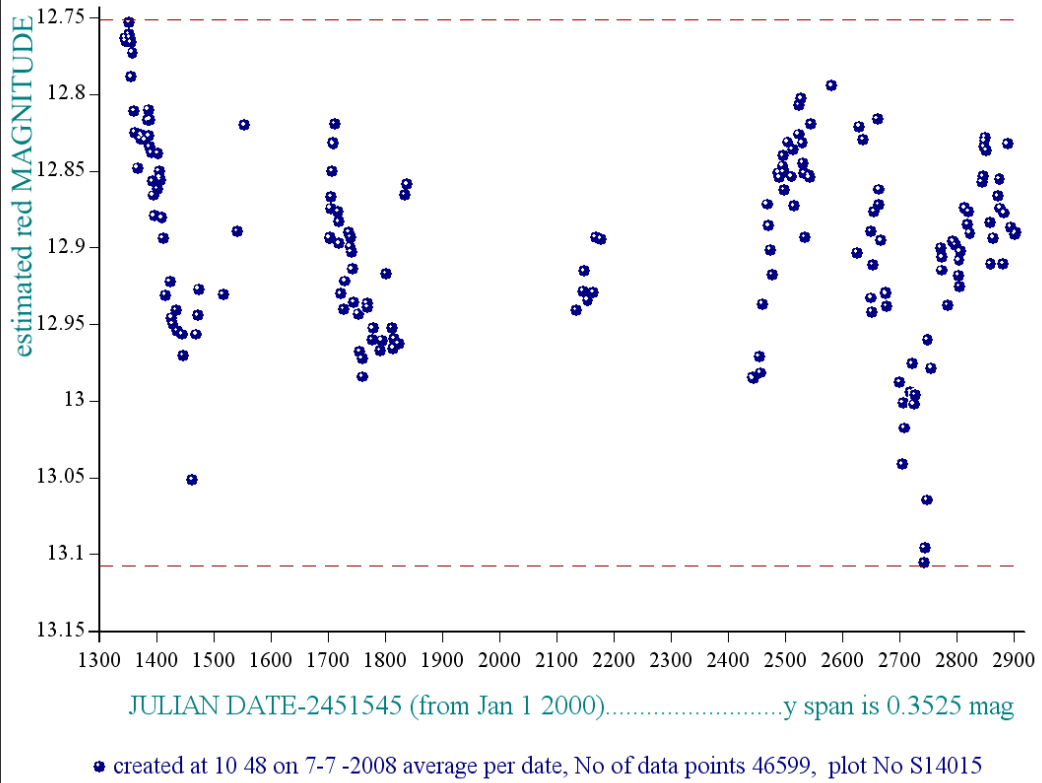
season 4: dates 2442 to 2755 is 8/9/2006 to 19/7/2007 (w)

season 5: dates 2772 to 2903 is 4/8/2007 to 13/12/2007 (v)

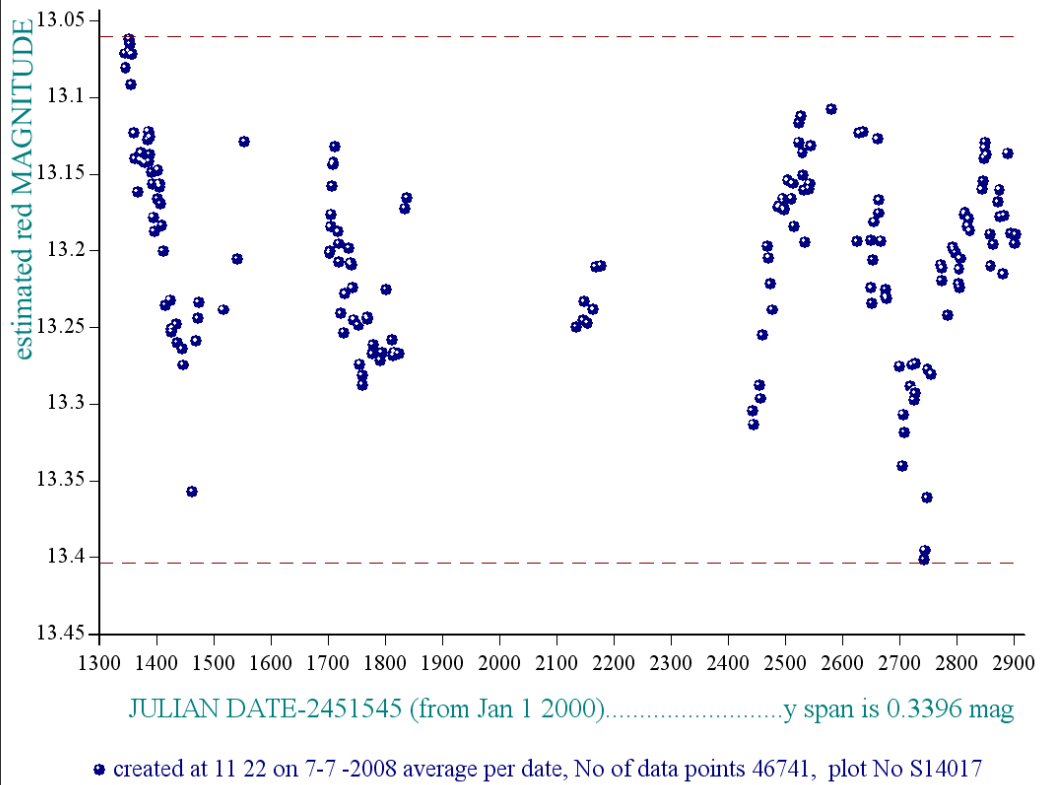
season 6: dates 2930 to 3266 is 9/1/2008 to 10/12/2008 (u)

season 7: dates 3403 to 3539 is 26/4/2009 to 10/9/2009 (t)

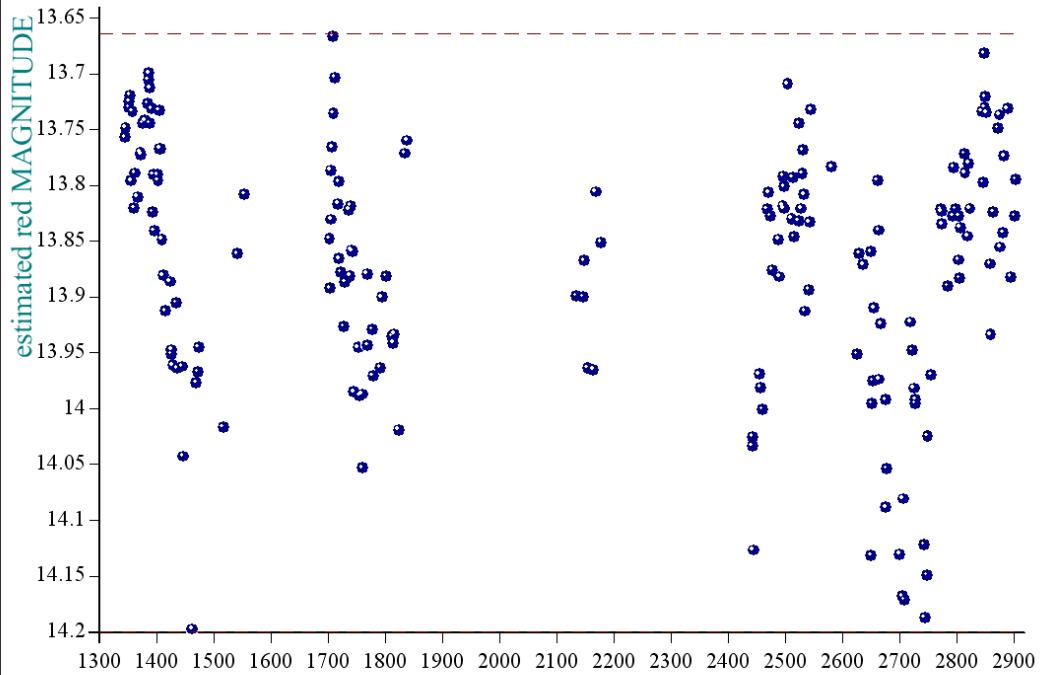
star a14177, refstar a00047 dia 10



star a14177, refstar a01366 dia 10



star a14177, refstar a00047 dia 33



JULIAN DATE-2451545 (from Jan 1 2000).....y span is 0.5312 mag

● created at 11 54 on 7-7 -2008 average per date, No of data points 46818, plot No S14039