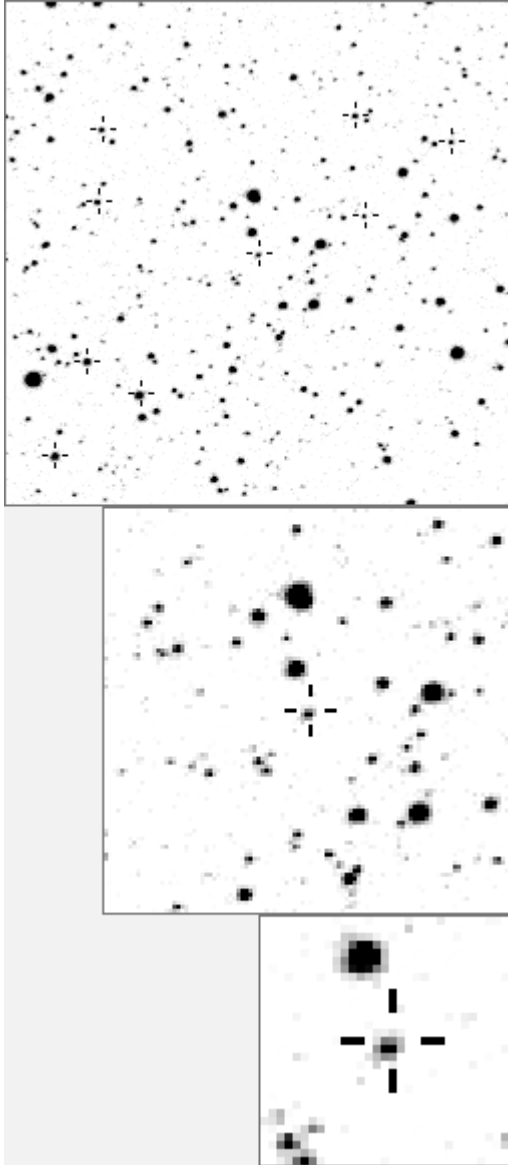


a14833



variable and brighter stars			
.	O	14833 v
.	a	146
.	b	511
. . l k	c	696
. m	d	1689
. . j c	e	1769
. n	f	4325 v
. O . e	g	4986 v
. h	h	6586 v
. d	i	6780 v
. . i b	j	12223 v
a f	k	12451 v
.	l	14003 v
. g	m	18137 v
.	n	20364 v
-----		-	-
.	O	14833 v
. l	a	696
.	b	1689
. a k	c	1769
. f n	d	3384
. d	e	4683
. j . c	f	8039
. O	g	8542
.	h	8927
. m	i	9518
. i	j	11784
. e . b	k	14805
.	l	17421
. g	m	18158
. h	n	19045

Bitmap sizes are 251, 101 and 31 pixels square, South up. The keys to the right refer to the 1st two bitmaps. The numbers in the key are those in my catalogue 'starlistA'. Stars marked with a cross have been found to be variable.

Data and comments on star a14833

SWid: a14833 / **USNO id: 0 0 / other id: IRAS21060+4550**

Co-ordinates, x,y in image z1051: 1903.9 1383.4

J2000 sky co-ordinates: 21 7 49.85 +46 2 59.87

CMC r'magnitude and 2MASS J, H, K magnitudes: 14.169 7.879 6.017 4.755

USNO B1.0 magnitudes, B1, R1, B2, R2, I2: 0 0 0 0 0

Misc comments :

Large movement lpv, 1.8 mag so far and going down in sawteeth, not done deep run on it but so far to 696 13.2 to 15, magr 1.8, a period of 650d plus another looks quite likely

Comparison reference star(s) co-ordinates:

a00696: 21 7 49.28 +46 1 48.5

Data from 2008 and 2009 need to be added

Reminder: **All dates, JD and HJD are from Jan 1st 2000**

season 1: dates 1316 to 1553 is 9/8/2003 to 3/4/2004 **(a)**

season 2: dates 1696 to 1838 is 23/8/2004 to 12/01/2005 **(z)**

season 3: dates 2085 to 2177 is 16/9/2005 to 1/12/2005 **(y)**

season 4: dates 2442 to 2755 is 8/9/2006 to 19/7/2007 **(w)**

season 5: dates 2772 to 2903 is 4/8/2007 to 13/12/2007 **(v)**

season 6: dates 2930 to 3266 is 9/1/2008 to 10/12/2008 **(u)**

season 7: dates 3403 to 3539 is 26/4/2009 to 10/9/2009 **(t)**

