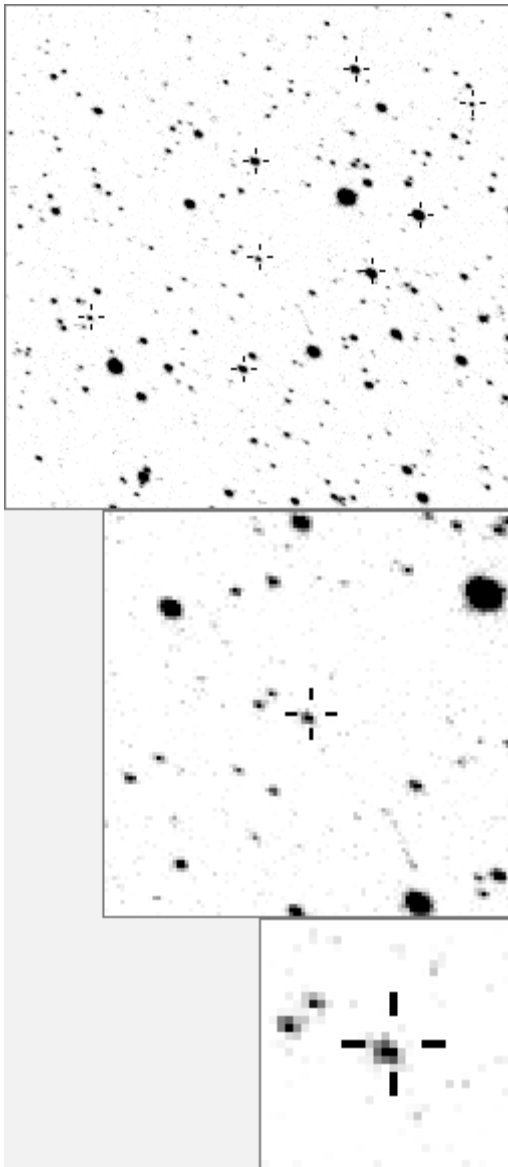


a12507



variable and brighter stars

.	O 12507 v
. j	a 105
. m	b 311
.	c 1035
. k	d 1367 v
. h a	e 2134
. d	f 2207 v
. O f	g 2316
.	h 2399
. n	i 2499
. b l c i	j 3769 v
.	k 5854 v
.	l 6822 v
.	m 17496 v
. g e	n 19116 v

. d m l	O 12507 v
.	a 105
. n i a	b 1035
. c	c 2399
.	d 5854 v
.	e 9065
.	f 11011
. O	g 15943
.	h 16447
k	i 17356
. h	j 18016
.	k 19338
.	l 23714
. g f	m 26815
. e b	n 27465

Bitmap sizes are 251, 101 and 31 pixels square, South up. The keys to the right refer to the 1st two bitmaps. The numbers in the key are those in my catalogue 'starlistA'. Stars marked with a cross have been found to be variable.

Data and comments on star a12507

SWid: a12507 / **USNO id: 1370 468435 / other id: GSC 3593-2852**

Co-ordinates, x,y in image z1051: 3405.7 2916.4

J2000 sky co-ordinates: 21 13 38.37 +47 3 29.35

CMC r'magnitude and 2MASS J,H,K magnitudes: 13.562 12.159 11.73 11.61

USNO B1.0 magnitudes, B1,R1,B2,R2,I2: 14.88 13.22 15.3 13.39 13.62

Misc comments :

Best ref looks like 229 but that is var, I'll try 105, P=0.22781. I get a beautiful W uma curve at twice that period, .45562

Comparison reference star(s) co-ordinates:

a00105: 21 13 48.45 +47 2 13.15

a00229: 21 12 26.46 +46 55 8.82

Reminder: **All dates, JD and HJD are from Jan 1st 2000**

season 1: dates 1316 to 1553 is 9/8/2003 to 3/4/2004 **(a)**

season 2: dates 1696 to 1838 is 23/8/2004 to 12/01/2005 **(z)**

season 3: dates 2085 to 2177 is 16/9/2005 to 17/12/2005 **(y)**

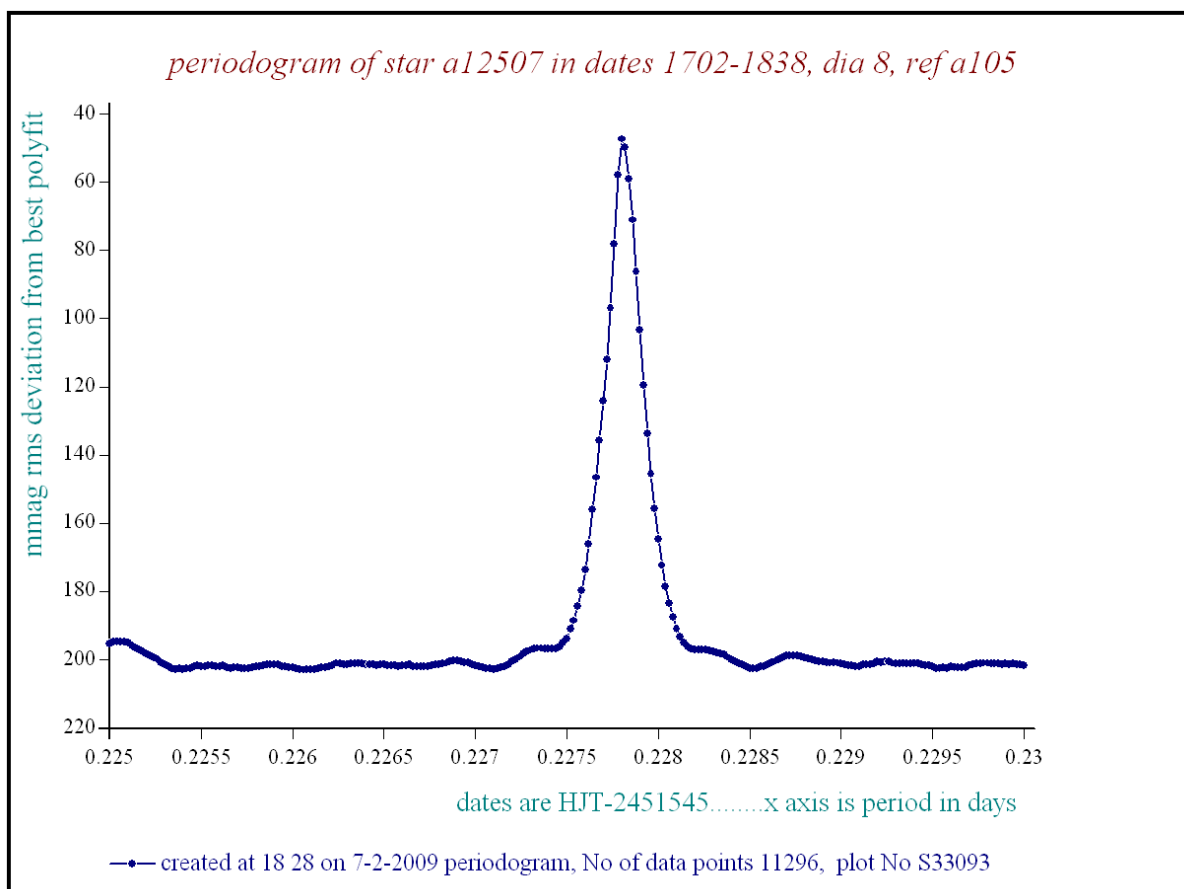
season 4: dates 2442 to 2755 is 8/9/2006 to 19/7/2007 **(w)**

season 5: dates 2772 to 2903 is 4/8/2007 to 13/12/2007 **(v)**

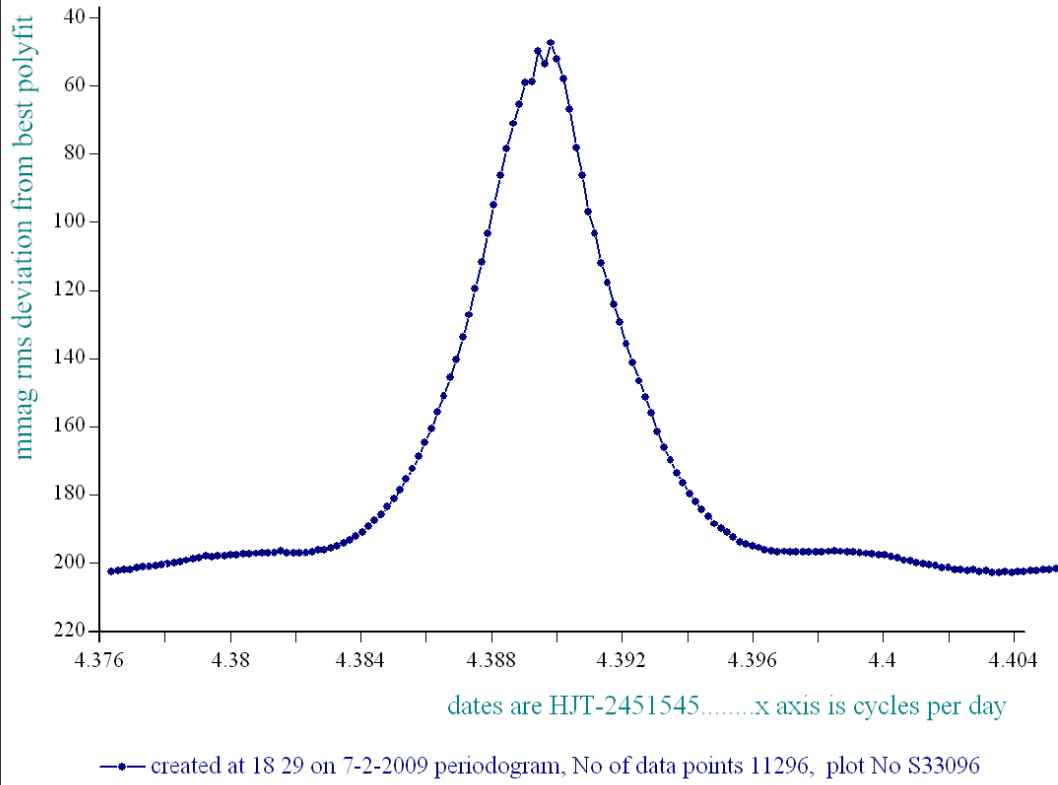
season 6: dates 2930 to 3266 is 9/1/2008 to 10/12/2008 **(u)**

season 7: dates 3403 to 3539 is 26/4/2009 to 10/9/2009 **(t)**

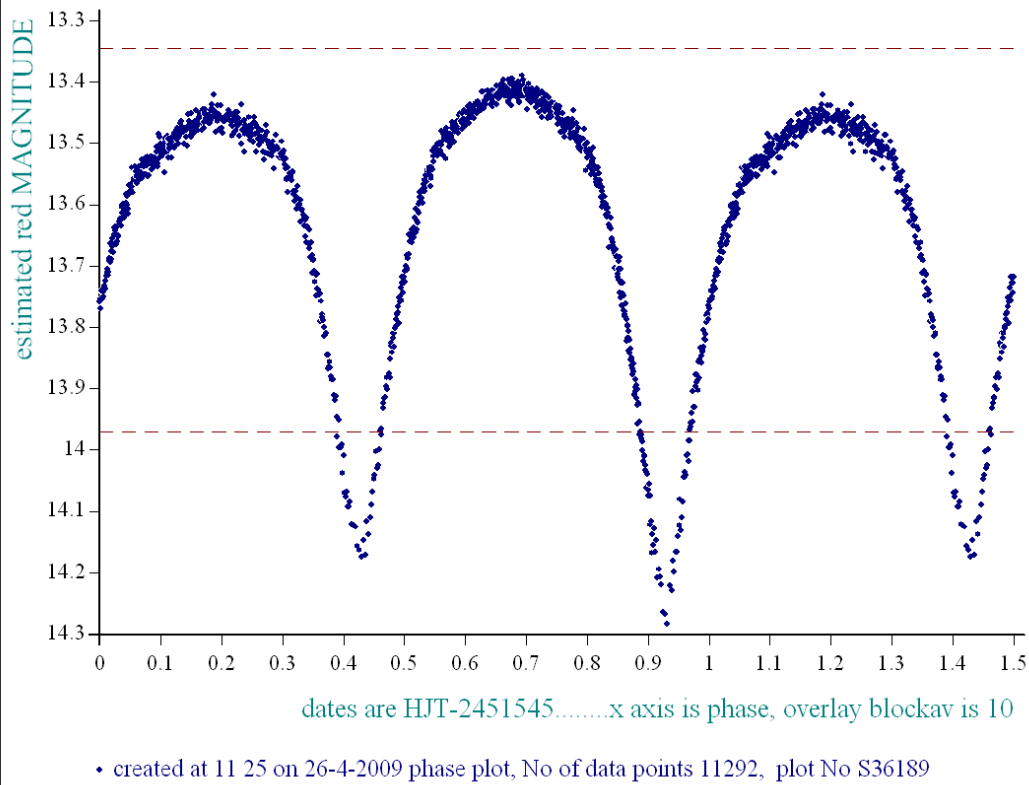
P=0.22781 in 2004 and 2007, an unusual peaky periodogram



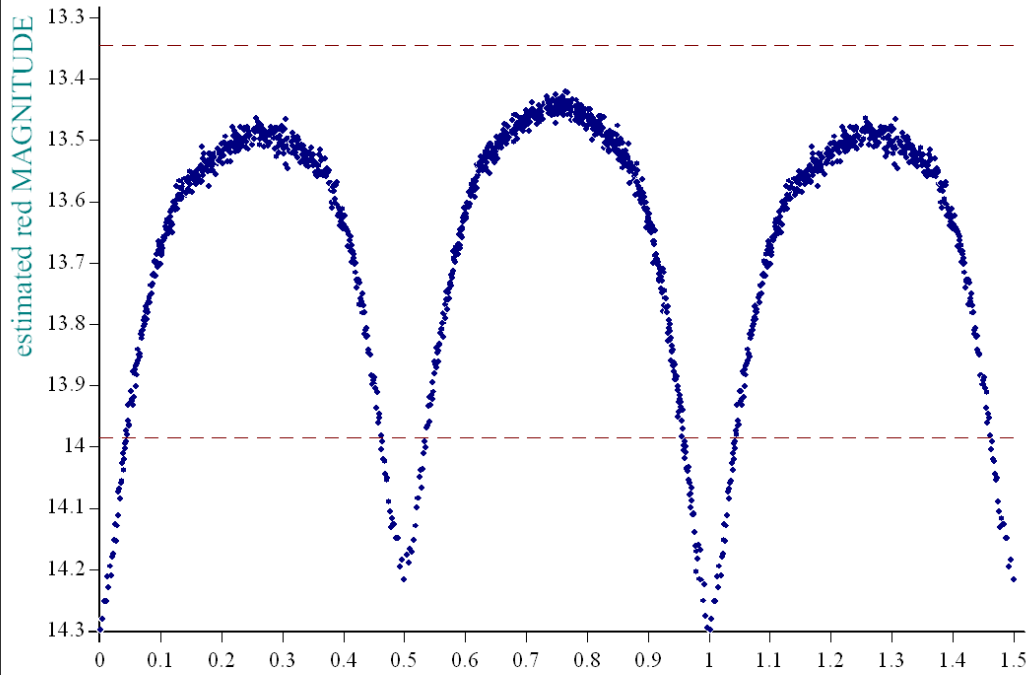
periodogram of star a12507 in dates 1702-1838, dia 8, ref a105



Star a12507 dates 1702-1838, dia 8, ref a229c, epoch 1700, period 0.45562



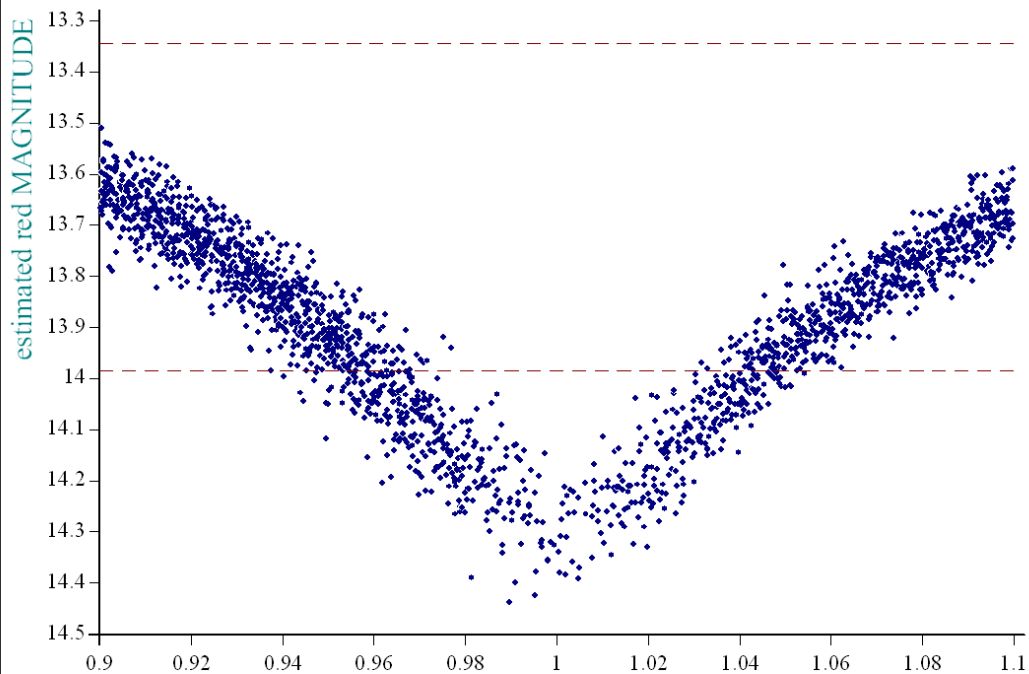
Star a12507 dates 1702-1838, dia 8, ref a105c, epoch 1699.967, period 0.45562



dates are HJT-2451545.....x axis is phase, overlay blockav is 10

• created at 11 35 on 26-4-2009 phase plot, No of data points 11296, plot No S36200

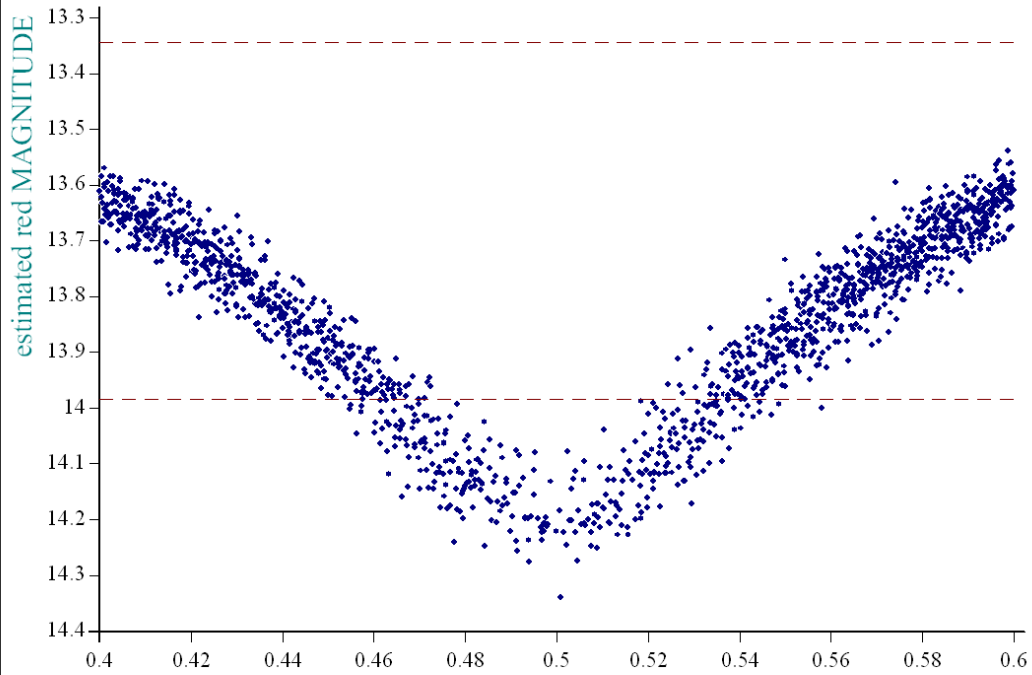
Star a12507 dates 1702-1838, dia 8, ref a105c, epoch 1699.967, period 0.45562



dates are HJT-2451545.....x axis is phase, overlay blockav is 10

• created at 11 36 on 26-4-2009 phase plot, No of data points 11296, plot No S36201

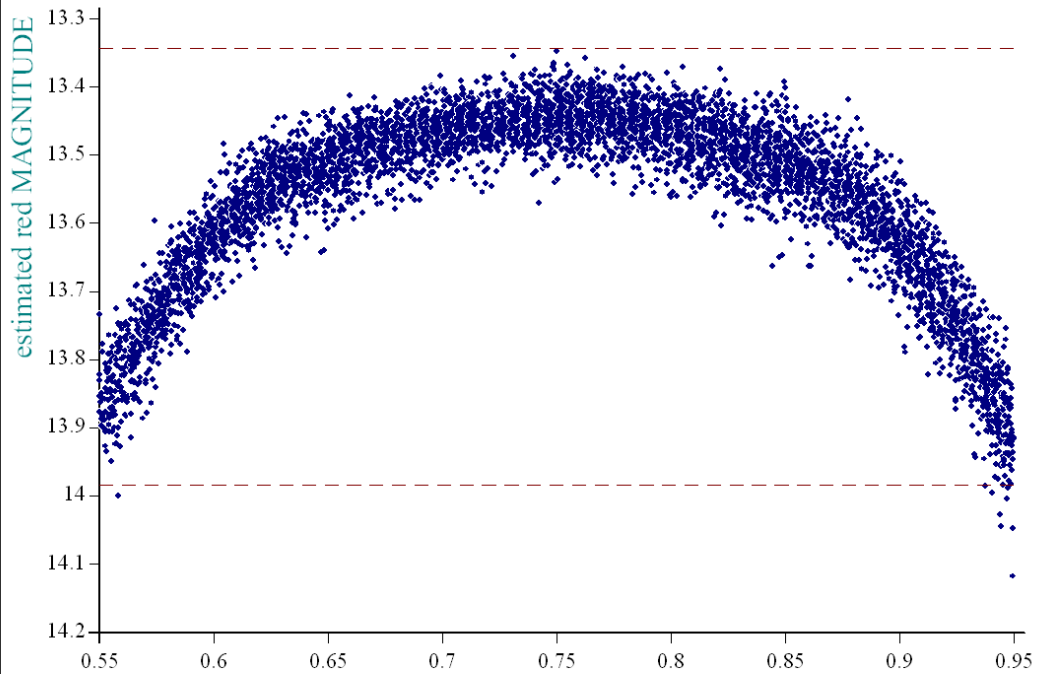
Star a12507 dates 1702-1838, dia 8, ref a105c, epoch 1699.967, period 0.45562



dates are HJT-2451545.....x axis is phase, overlay blockav is 10

• created at 11 38 on 26-4-2009 phase plot, No of data points 11296, plot No S36204

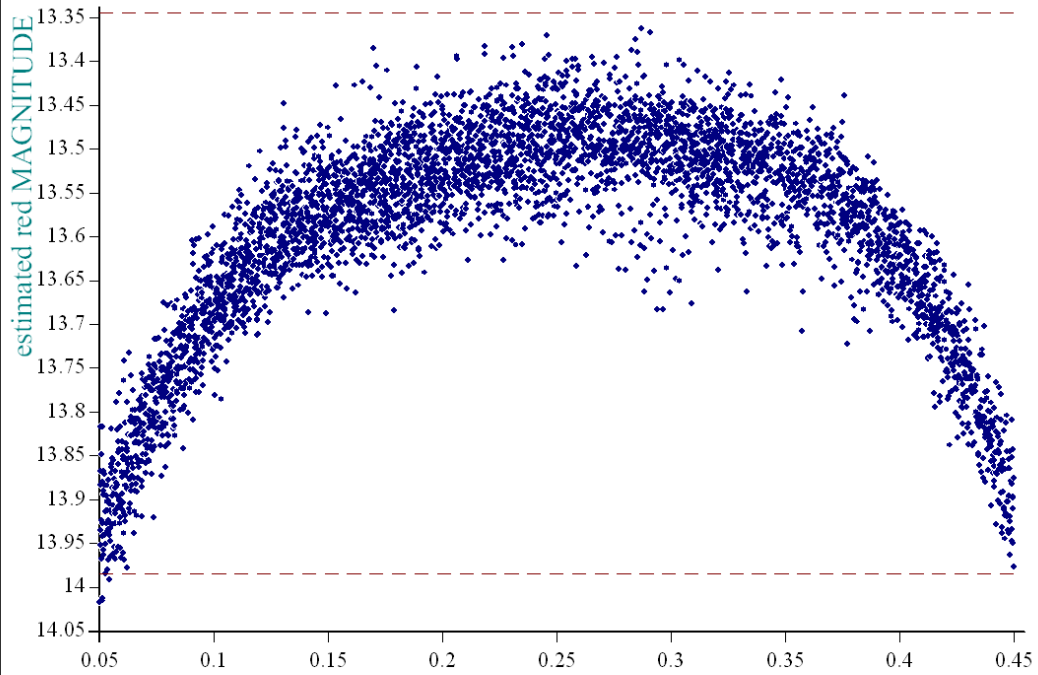
Star a12507 dates 1702-1838, dia 8, ref a105c, epoch 1699.967, period 0.45562



dates are HJT-2451545.....x axis is phase, overlay blockav is 10

• created at 11 41 on 26-4-2009 phase plot, No of data points 11296, plot No S36210

Star a12507 dates 1702-1838, dia 8, ref a105c, epoch 1699.967, period 0.45562



• created at 11 43 on 26-4-2009 phase plot, No of data points 11296, plot No S36216