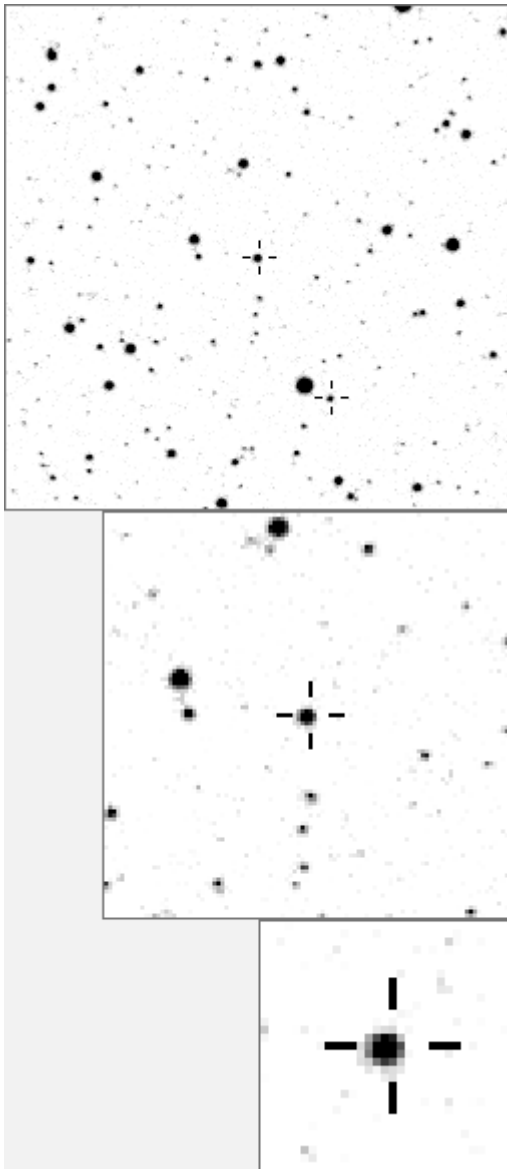


a05978



variable and brighter stars			
.	O 5978 v
. k	a 231
.	b 909
. m .	c 2375
. i	d 2991
. . g	e 3197
. e h	f 3421
. O b	g 3604
.	h 3654
. f	i 3926
.	j 4230
.	k 4231
.	l 4634
.	m 4684
.	n 12760 v

.	O 5978 v
.	a 3197
. n	b 3926
.	c 15940
.	d 17092
.	e 20479
.	f 22735
.	g 26289
.	h 26350
.	i 26577
.	j 26739
d	k 33934
.	l 34902
.	m 37827
.	n 38396

Bitmap sizes are 251, 101 and 31 pixels square, South up.
 The keys to the right refer to the 1st two bitmaps. The numbers in the key are those in my catalogue 'starlistA'.
 Stars marked with a cross have been found to be variable.

Data and comments on star a05978

SWid: a05978 / **USNO id: 1356 415633 / other id: V458 Cyg (EA/SD:)**

Co-ordinates, x,y in image z1051: 1978.6 790.8

J2000 sky co-ordinates: 21 8 7.31 45 39 29.9

CMC r'magnitude and 2MASS J,H,K magnitudes: 12.769 11.401 10.784 10.613

USNO B1.0 magnitudes, B1,R1,B2,R2,I2: 14.46 12.7 14.93 12.63 13.05

Misc comments :

1 v458eb. R has found a quadratic period variation. To 601 magm is 12.6, magr 0.75 WR.

GCVS entry: V458 1 21 08 08 45 39 16 5978

Comparison reference star(s) co-ordinates:

601: 21 8 39.64 45 39 59.52

R report available, needs to be added, CMC mags needed

Reminder:

All dates, JD and HJD are from Jan 1st 2000

season 1: dates 1316 to 1553 is 9/8/2003 to 3/4/2004 (a)

season 2: dates 1696 to 1838 is 23/8/2004 to 12/01/2005 (z)

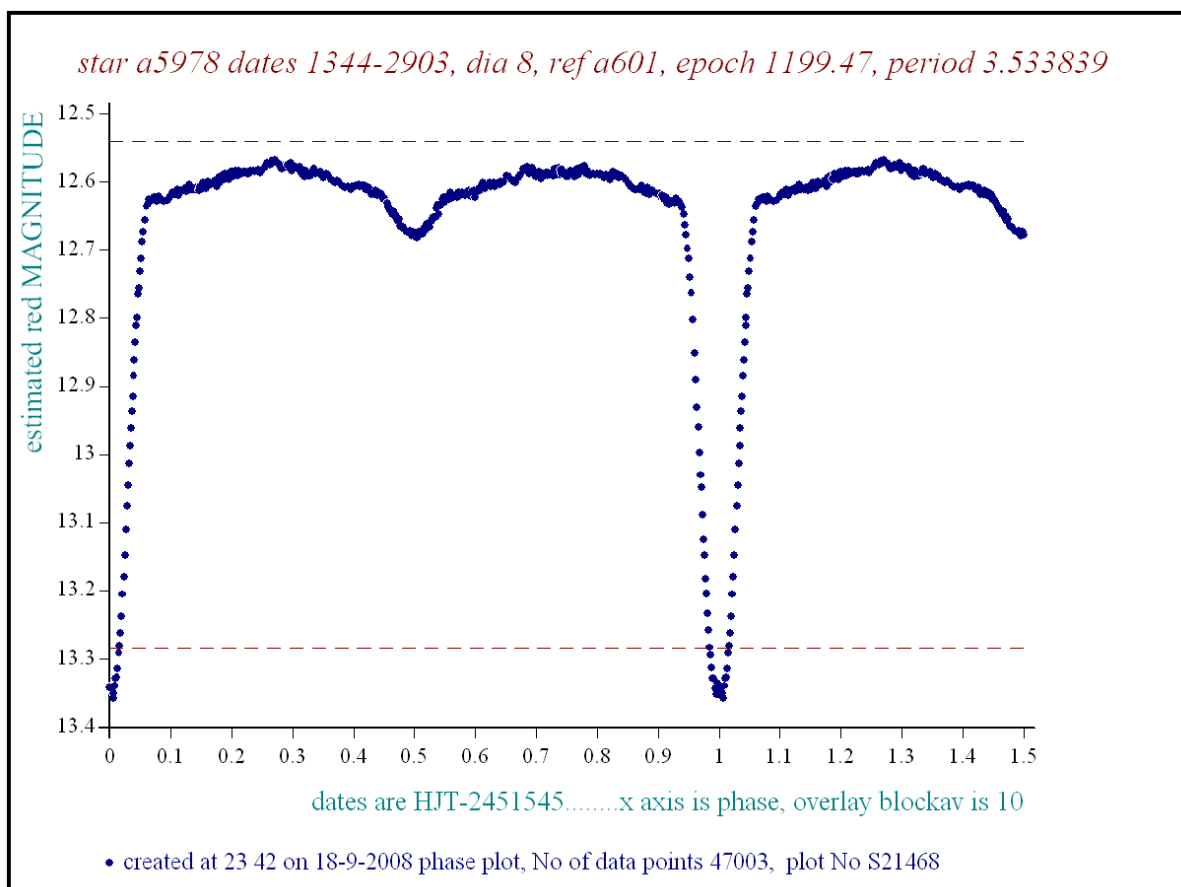
season 3: dates 2085 to 2177 is 16/9/2005 to 17/12/2005 (y)

season 4: dates 2442 to 2755 is 8/9/2006 to 19/7/2007 (w)

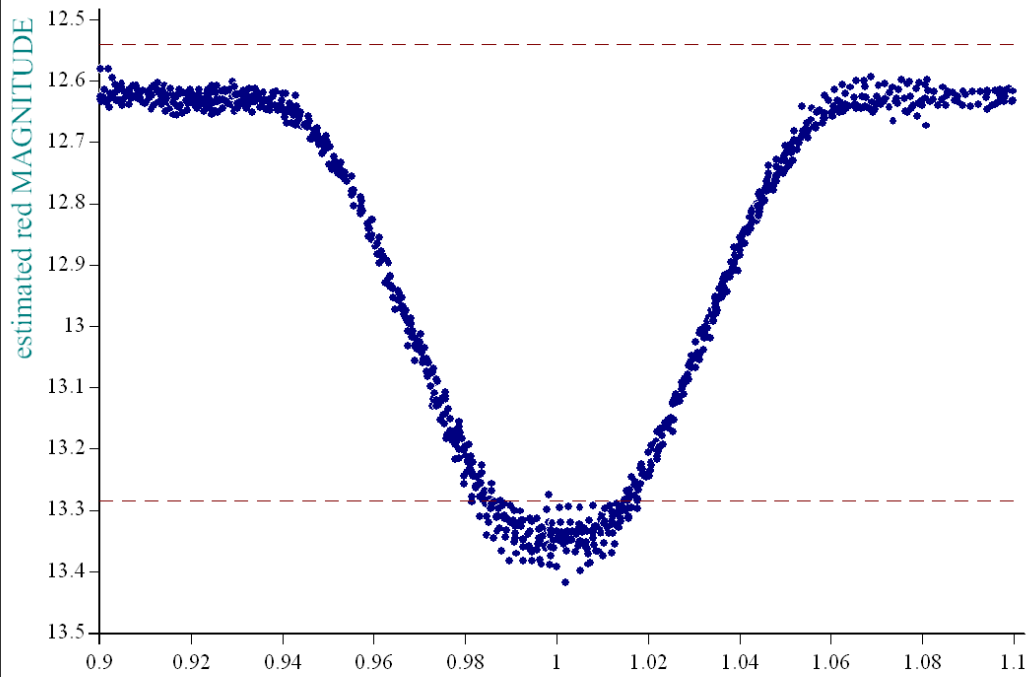
season 5: dates 2772 to 2903 is 4/8/2007 to 13/12/2007 (v)

season 6: dates 2930 to 3266 is 9/1/2008 to 10/12/2008 (u)

season 7: dates 3403 to 3539 is 26/4/2009 to 10/9/2009 (t)



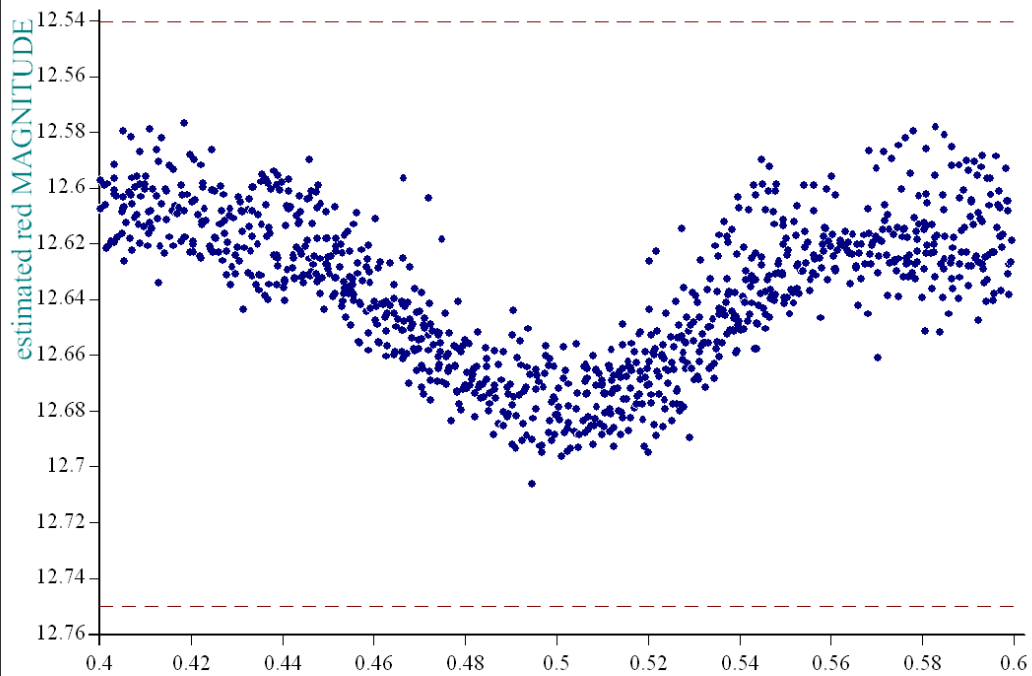
star a5978 dates 1344-2903, dia 8, ref a601, epoch 1199.47, period 3.533839



dates are HJT-2451545.....x axis is phase, overlay blockav is 10

• created at 23 43 on 18-9-2008 phase plot, No of data points 47003, plot No S21469

star a5978 dates 1344-2903, dia 8, ref a601, epoch 1199.47, period 3.533839



dates are HJT-2451545.....x axis is phase, overlay blockav is 10

• created at 23 45 on 18-9-2008 phase plot, No of data points 47003, plot No S21471