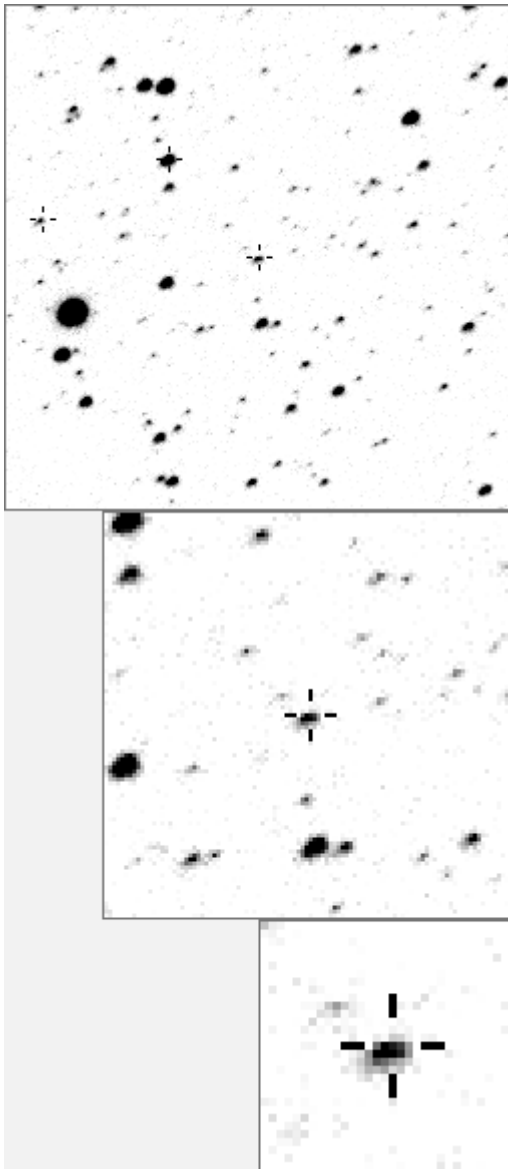


a11035= V586 Cyg



variable and brighter stars		
.	O 11035	v
.	a 488	
. . . . d k	b 756	
. c . .	c 871	
. . . . e	d 1460	
.	e 1842	v
. n	f 1935	
.	g 2713	
. f	h 3166	
.	i 3225	
. b	j 3284	
. . g	k 3353	
. l	l 3431	
.	m 3541	
. j i	n 16826	v

a h	O 11035	v
.	a 1842	v
. d	b 1935	
.	c 3166	
.	d 7524	
. n l .	e 13666	
. .	f 14540	
. .	g 15480	
. .	h 16624	
b .	i 27780	
. k	j 28678	
. .	k 29312	
. g i c f m . e	l 32198	
. .	m 33969	
. .	n 34835	

Bitmap sizes are 251, 101 and 31 pixels square, South up. The keys to the right refer to the 1st two bitmaps. The numbers in the key are those in my catalogue 'starlistA'. Stars marked with a cross have been found to be variable.

Data and comments on star a11035

SWid: a11035 / **USNO id: 1355 425430 / other id: V586 Cyg**

Co-ordinates, x,y in image z1051: 3558.8 587.4

J2000 sky co-ordinates: 21 14 4.64 +45 31 9.68

CMC r'magnitude and 2MASS J,H,K magnitudes: 13.579 11.878 11.441 11.286

USNO B1.0 magnitudes, B1,R1,B2,R2,I2: 14.31 12.25 13.95 12.65 13.02

Misc comments :

V586 v int star, dips to 0.37 but no full dip seen ,period 4.84 days

To 112, magm 13.05 magr 1.08 p 4.8377

GCVS entry: V586 1 21 14 05.6 45 30 46 11035

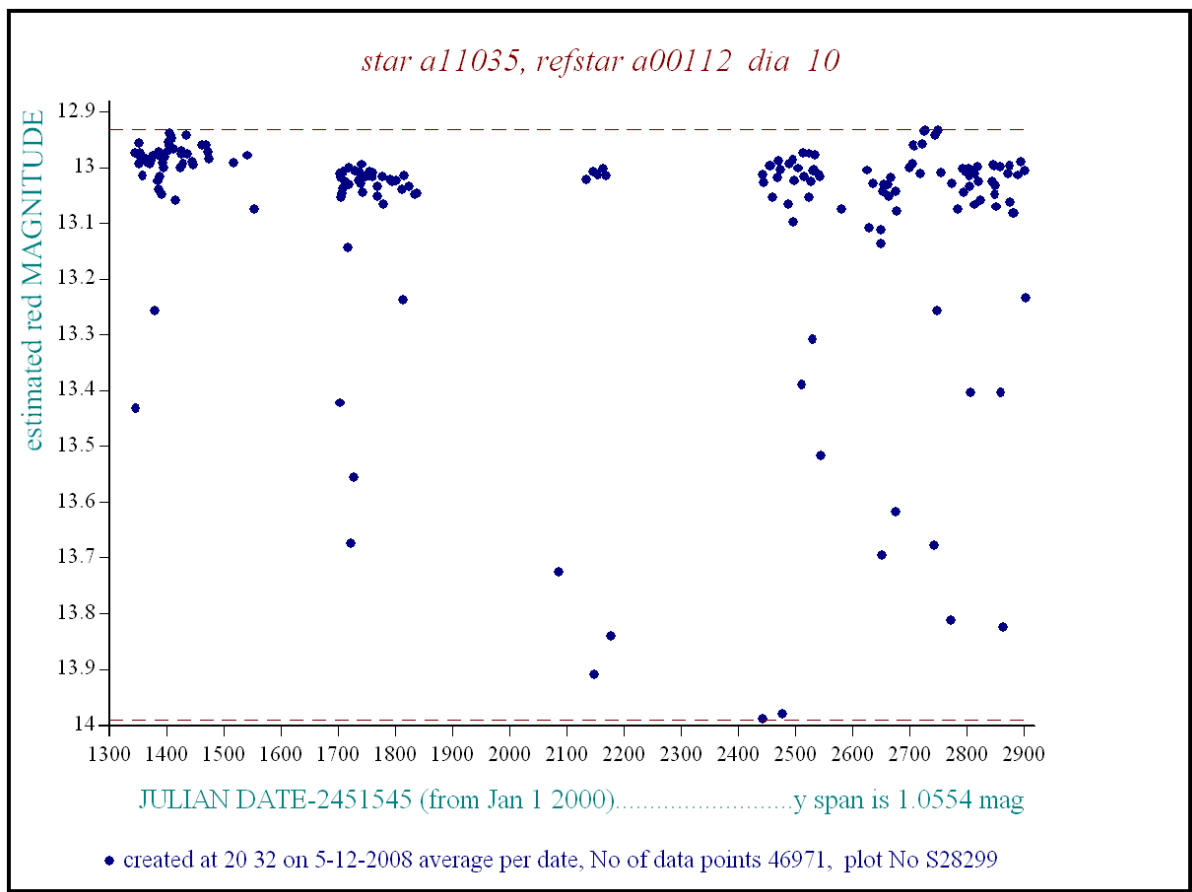
Comparison reference star(s) co-ordinates:

a00112: 21 13 3.8 +45 28 19.59

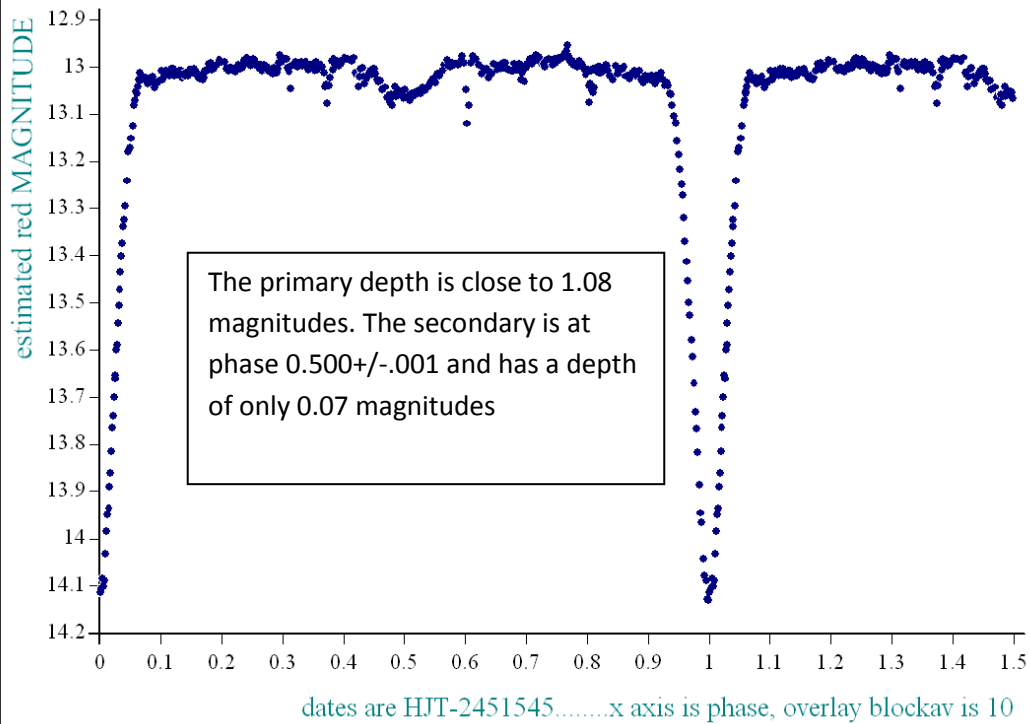
Years 2008 and 9 to be added, real time plots as well, do CMC magnitude too.

Reminder: **All dates, JD and HJD are from Jan 1st 2000**

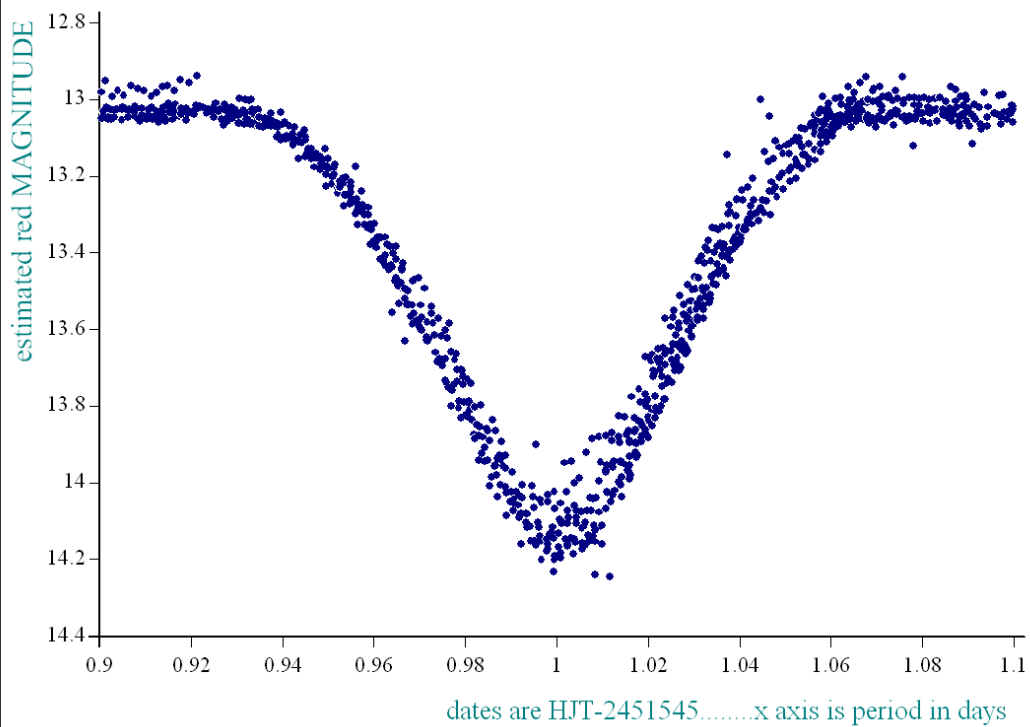
season 1: dates 1316 to 1553 is 9/8/2003 to 3/4/2004	(a)
season 2: dates 1696 to 1838 is 23/8/2004 to 12/01/2005	(z)
season 3: dates 2085 to 2177 is 16/9/2005 to 17/12/2005	(y)
season 4: dates 2442 to 2755 is 8/9/2006 to 19/7/2007	(w)
season 5: dates 2772 to 2903 is 4/8/2007 to 13/12/2007	(v)
season 6: dates 2930 to 3266 is 9/1/2008 to 10/12/2008	(u)
season 7: dates 3403 to 3539 is 26/4/2009 to 10/9/2009	(t)



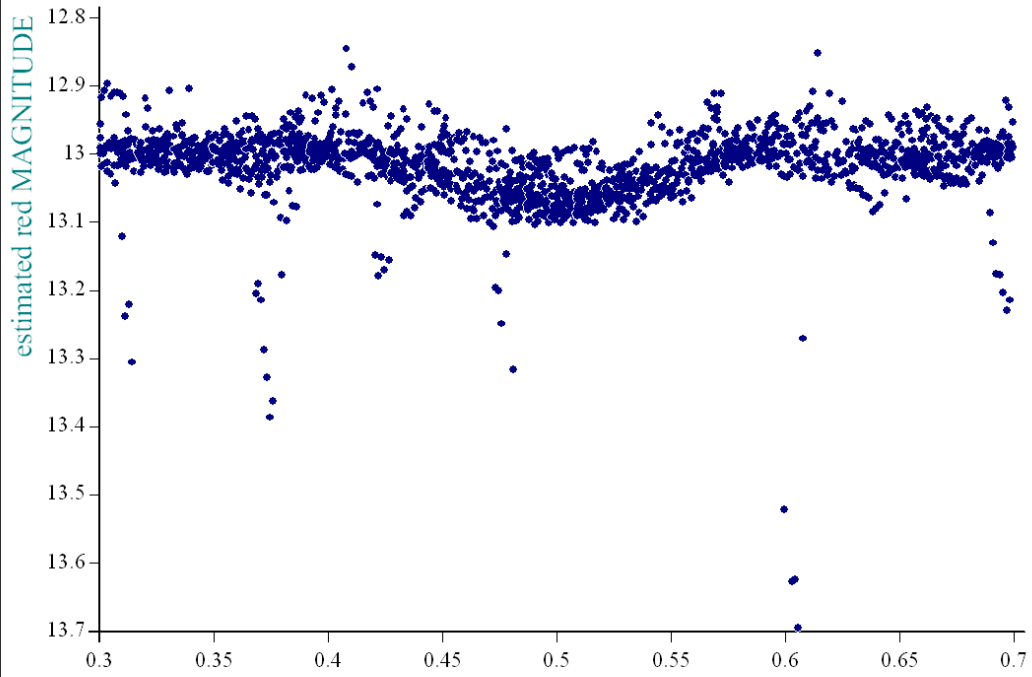
star a11035 dates 1344-2903, dia 10, ref a112, epoch 1330.803, period 4.8377



star a11035 dates 1344-2903, dia 10, ref a112, epoch 1330.803, period 4.8377



star a11035 dates 1344-2903, dia 10, ref a112, epoch 1330.803, period 4.8377



• created at 22 3 on 5-12-2008 phase plot, No of data points 47038, plot No S28378