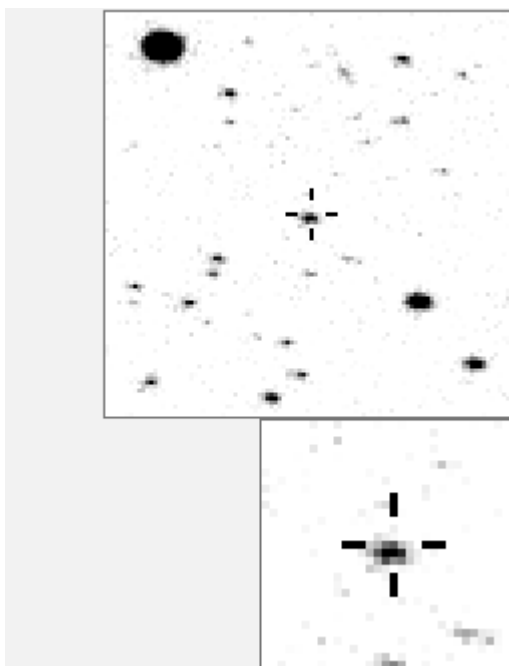


a14160



-----															- -			
.	O	14160	v
.	.	a	a	130	
.	.	.	.	f	b	3544	
.	c	8328	
.	d	14367	
.	e	18639	
.	f	23326	
.	g	26592	
.	h	28051	
.	i	28542	
.	j	30201	
.	k	32045	
.	l	33417	
.	m	35541	
.	n	37011	

Bitmap sizes are 101 and 31 pixels square, South up. The keys to the right refers to the top bitmap. The numbers in the key are those in my catalogue 'starlistA'. Stars marked with a cross have been found to be variable.

Data and comments on star a14160

SWid: a14160 / USNO id: 1364 410175 / other id:

Co-ordinates, x,y in image z1051: 3997.9 2022.4

J2000 sky co-ordinates: 21 15 51.08 +46 27 36.94

CMC r'magnitude and 2MASS J, H, K magnitudes: 13.776 12.777 12.651 12.563

USNO B1.0 magnitudes, B1, R1, B2, R2, I2: 14.46 13.79 14.31 13.58 13.52

Misc comments :

New eb, 040708. Period about 3.03654, magm to 130 is 14.22, magr is 0.66
 Interestingly this star is very edgy at 3998 2023, bang in the middle bottom.

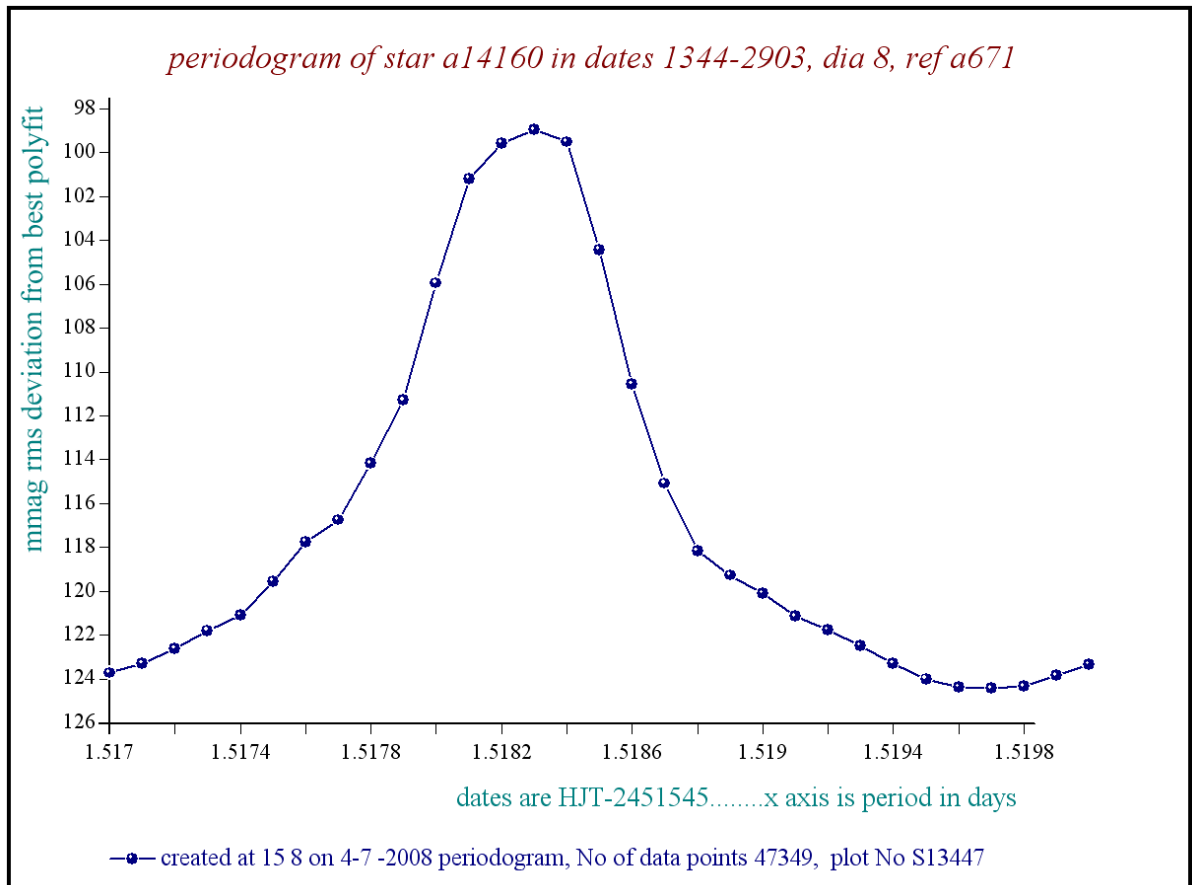
Comparison reference star(s) co-ordinates:

a00671: 21 15 42.56 +46 25 56.49

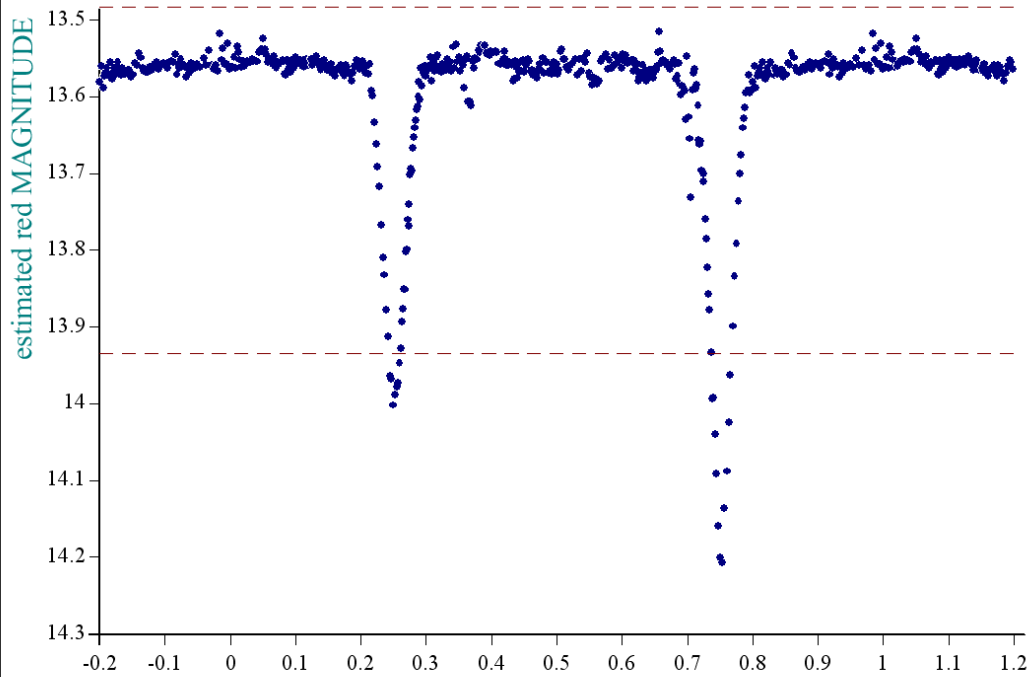
a00130: 21 14 19.99 +46 28 38.21

Reminder: **All dates, JD and HJD are from Jan 1st 2000**
 season 1: dates 1316 to 1553 is 9/8/2003 to 3/4/2004 (a)
 season 2: dates 1696 to 1838 is 23/8/2004 to 12/01/2005 (z)
 season 3: dates 2085 to 2177 is 16/9/2005 to 17/12/2005 (y)
 season 4: dates 2442 to 2755 is 8/9/2006 to 19/7/2007 (w)
 season 5: dates 2772 to 2903 is 4/8/2007 to 13/12/2007 (v)
 season 6: dates 2930 to 3266 is 9/1/2008 to 10/12/2008 (u)
 season 7: dates 3403 to 3539 is 26/4/2009 to 10/9/2009 (t)

More work needed on this star, minima, orbit etc.



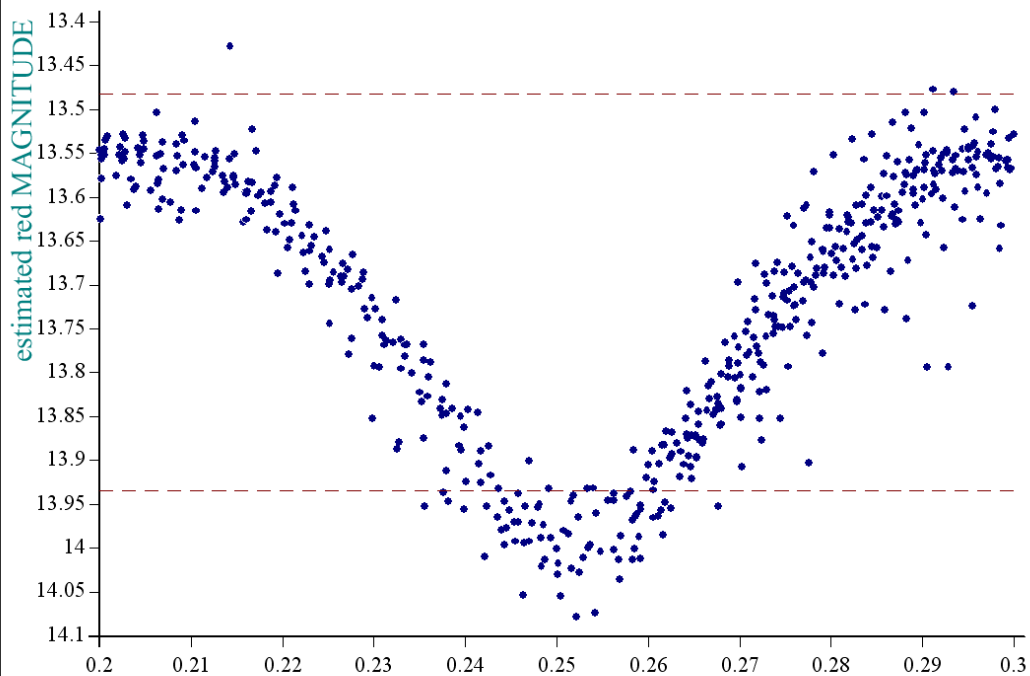
star a14160 in dates 1344-2903, dia 9, ref a130, epoch is 1321.5, period is 3.03654



dates are HJT-2451545.....x axis is phase, overlay blockav is 10

• created at 18 35 on 4-7 -2008 phase plot, No of data points 47419, plot No S13466

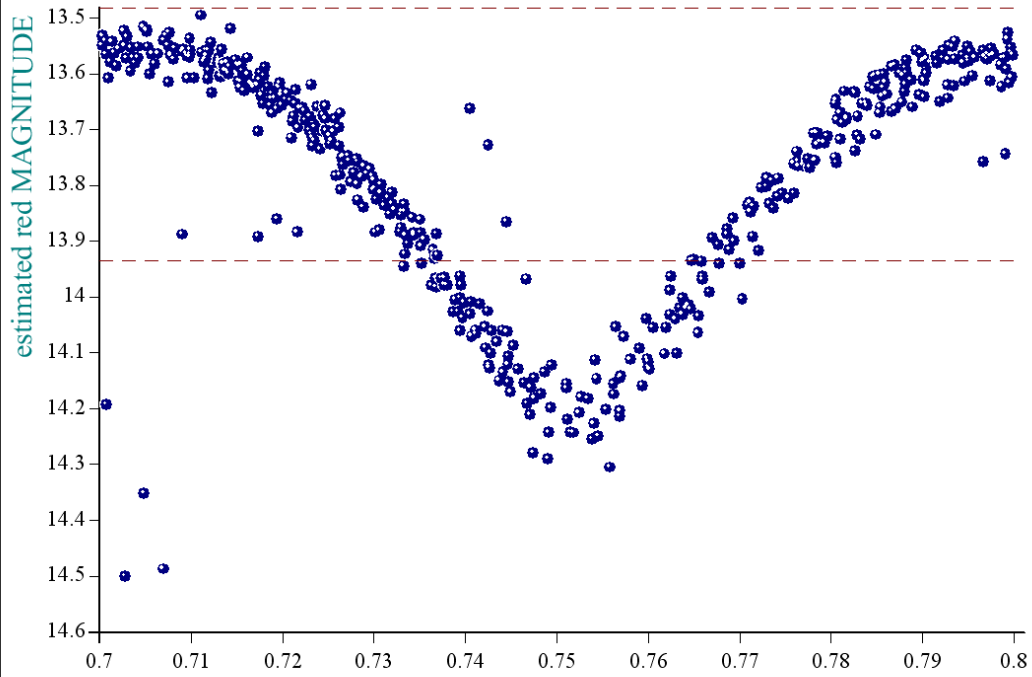
star a14160 in dates 1344-2903, dia 9, ref a130, epoch is 1321.5, period is 3.03654



dates are HJT-2451545.....x axis is phase, overlay blockav is 10

• created at 18 34 on 4-7 -2008 phase plot, No of data points 47419, plot No S13465

star a14160 in dates 1344-2903, dia 9, ref a130, epoch is 1321.5, period is 3.03654



dates are HJT-2451545.....x axis is phase, overlay blockav is 10

• created at 18 36 on 4-7 -2008 phase plot, No of data points 47419, plot No S13467

The primary-secondary phase difference is very close, but a little less, than 0.5, I make it 0.4996 by eye!