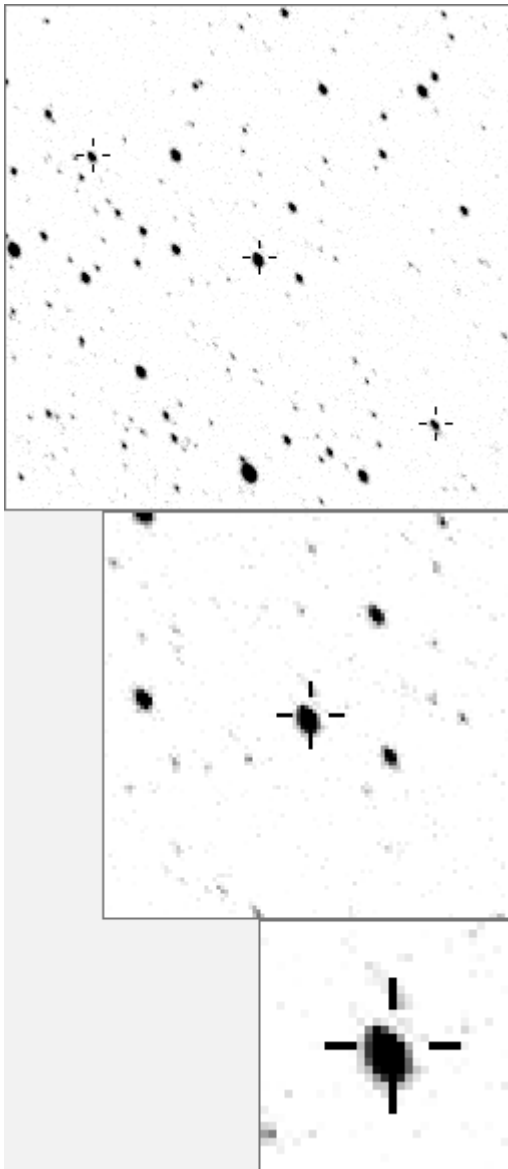


a01732=V530Cyg



variable & brighter stars		
. . . . . l . . . . .	O	1732 v
. . . . . . . . . . .	a	313
. . . . . h . . . . . c . . . . .	b	1037
. . . . . . . . . . .	c	2727
. . j . . d . . . . . . . . . . .	d	2819
. . . . . . . . . . .	e	2889
. . . . . m . . . . . n . . . . .	f	3301
b . . . . . i . . O . . . . . . . . . . .	g	4354
. . g . . . . . . . . . . .	h	4917
. . . . . . . . . . .	i	5380
. . . . . e . . . . . . . . . . .	j	5588 v
. . . . . . . . . . .	k	7274 v
. . . . . . . . . . . k . . . . .	l	8054
. . . . . a . . . . . . . . . . .	m	8335
. . . . . . . . . . . f . . . . .	n	8602
-----		
. . . . . . . . . . . d . . . . .	O	1732 v
g . . . . . j . . . . . . . . . . .	a	5380
. . . . . . . . . . . i . . . . .	b	8335
. . . . . n . . . . . b . . . . .	c	9104
. . . . . . . . . . . . . . . . .	d	29378
. . . . . . . . . . . . . . . . .	e	37987
. a . . . . . . . . . . l . . . . .	f	39115
. . . . . O . . . . . f . . . . .	g	48793
. . . . . . . . . . . . . . . . .	h	50365
. . k . . h . . . . . c . . . . .	i	51150
. . . . . . . . . . . . . . . . .	j	51732
. . . . . . . . . . . . . . . . .	k	53962
. . . . . . . . . . . . . . . . .	l	54712
. . . . . . . . . . . . . . . . .	m	59673
. . . . . m e . . . . . . . . . . .	n	62687

Bitmap sizes are 251, 101 and 31 pixels square, South up.  
 The keys to the right refer to the 1<sup>st</sup> two bitmaps. The numbers in the key are those in my catalogue 'starlistA'. Stars marked with a cross have been found to be variable.

The star distortion is due to being very close to field edge in 'y' and ¼ across in 'x'

**Data and comments on star a01732**

SWid: a01732 / **USNO id: 3593 286801 / other id: V530 Cyg**

Co-ordinates, x,y in image z1051: 3016.9 3786.4

**J2000 sky co-ordinates: 21 12 9.54 +47 38 1.35**

CMC r'magnitude and 2MASS J,H,K magnitudes: 11.632 10.391 10.139 10.043

USNO B1.0 magnitudes, B1,R1,B2,R2,I2: 12.89 11.46 12.38 11.41 11.01

Misc comments :

4/07/07 v530, see 4yr plot, to 593 it's 11.38, main dip 11.97 (0.59), possible sec at 11.42, phase .468.

Aug 08, see b2159a. If 2881 min is real the period is 50.82269 interpolating the 1356 min to 1356.56.

Using 2474 and 2677 I get 50.8235, both less than the period given in the 1994 paper of 50.83141.

I now get a phase of 0.474 for the sec. Ref 313 is best I think, more work needed on the ws file. More work needed to locate the other minima, if any, in the last two years.

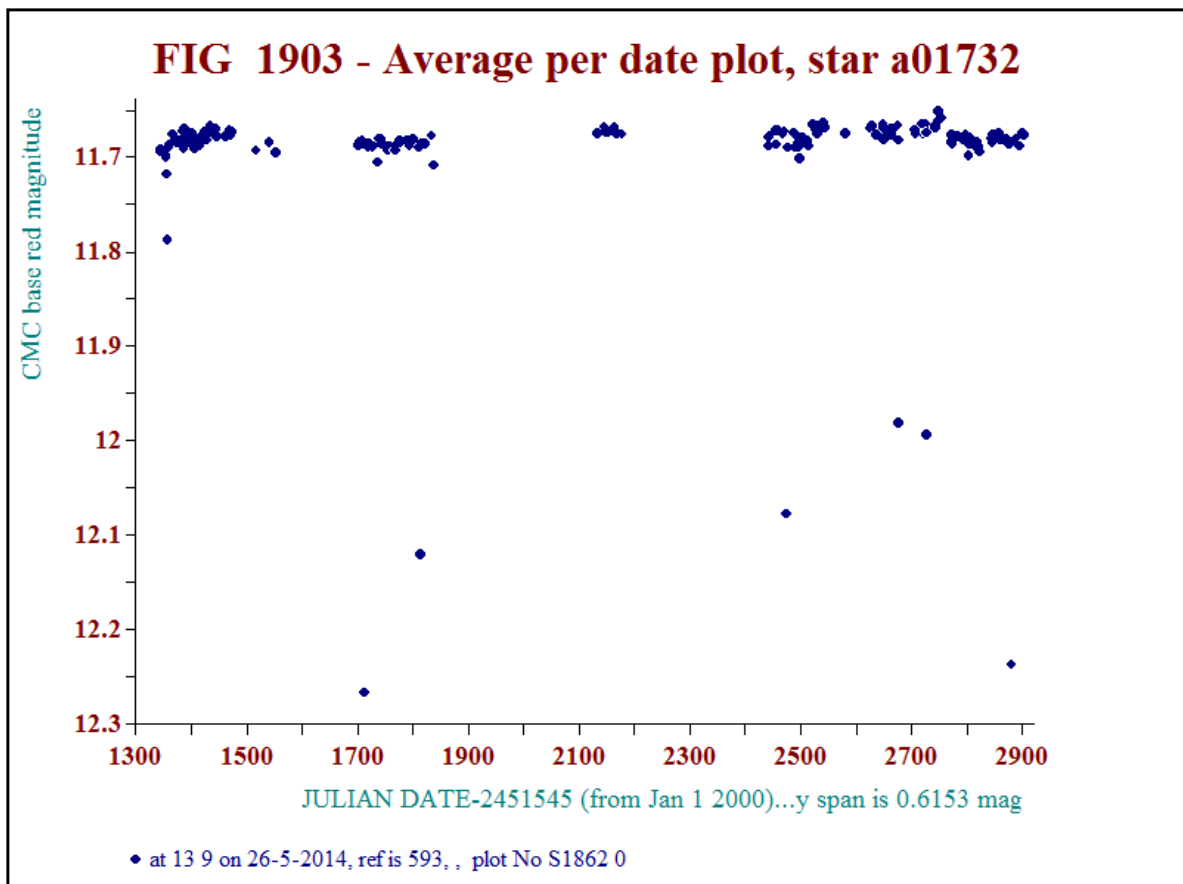
Comparison reference star(s) co-ordinates:

**a00593: 21 12 8.62 +47 42 11.6**

**a00313: 21 12 20.74 +47 43 7.58**

Colour temperature estimate: 6777K , The magnitudes are based on USNO data so not that accurate.

**GCVS entry: V530 1 21 12 09.5 47 38 02**

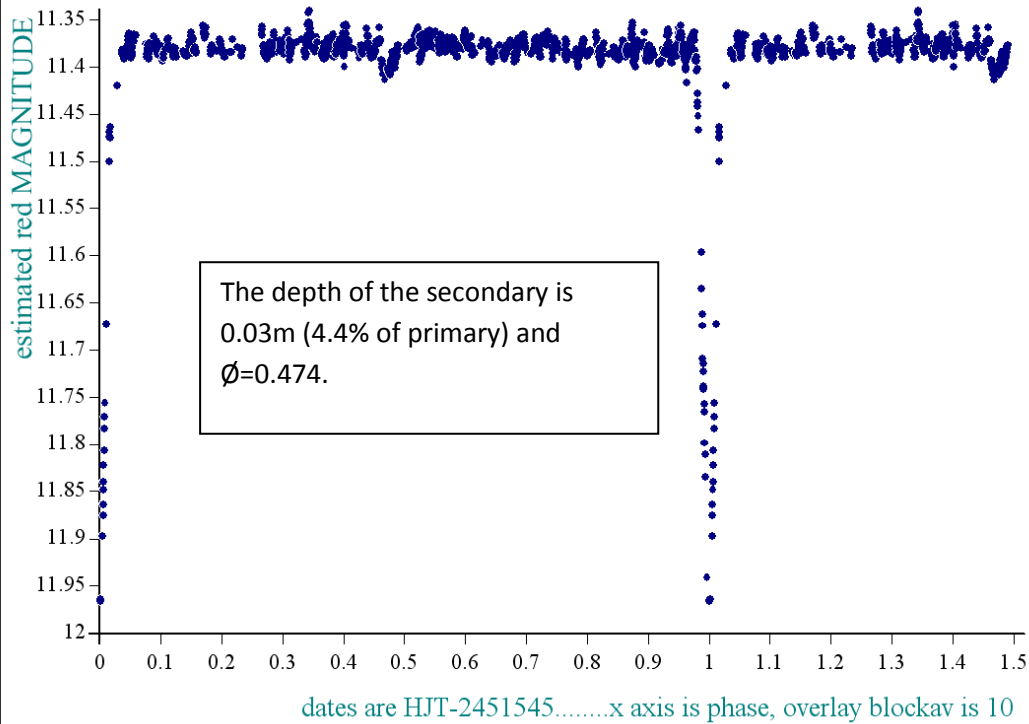


These 7 events are the only dip records in first 5 years

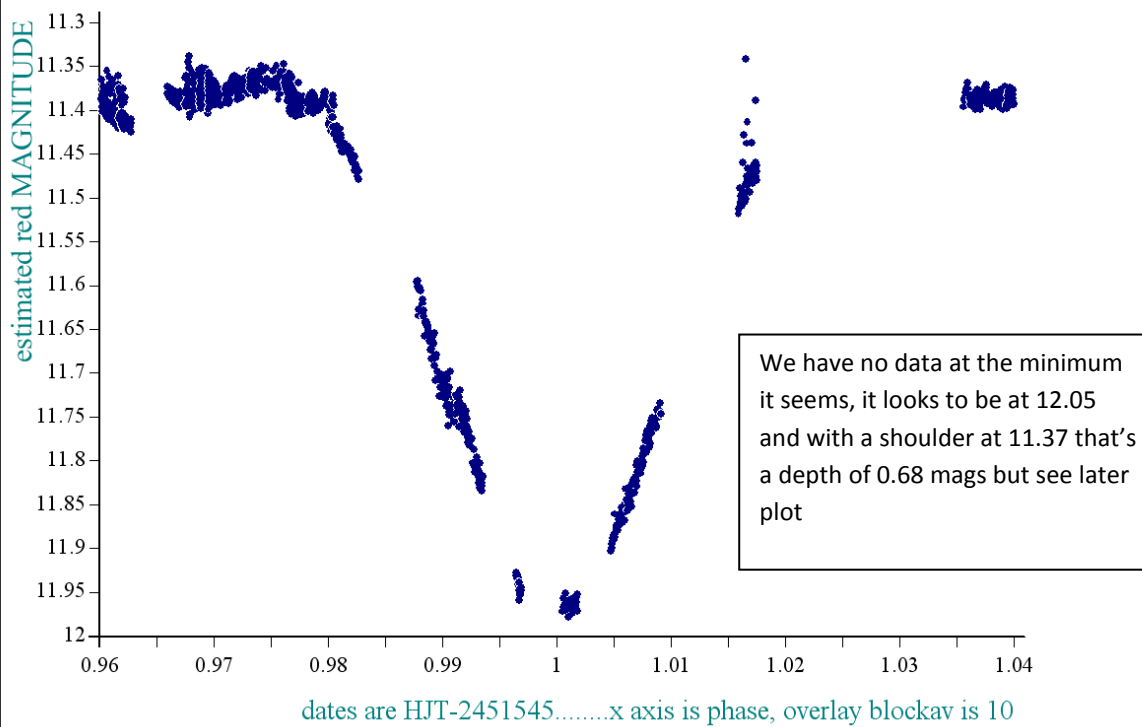
Reminder:

- season 1: dates 1316 to 1553 is 9/8/2003 to 3/4/2004 (a)
- season 2: dates 1696 to 1838 is 23/8/2004 to 12/01/2005 (z)
- season 3: dates 2085 to 2177 is 16/9/2005 to 17/12/2005 (y)
- season 4: dates 2442 to 2755 is 8/9/2006 to 19/7/2007 (w)
- season 5: dates 2772 to 2903 is 4/8/2007 to 13/12/2007 (v)
- season 6: dates 2930 to 3266 is 9/1/2008 to 10/12/2008 (u)
- season 7: dates 3403 to 3539 is 26/4/2009 to 10/9/2009 (t)

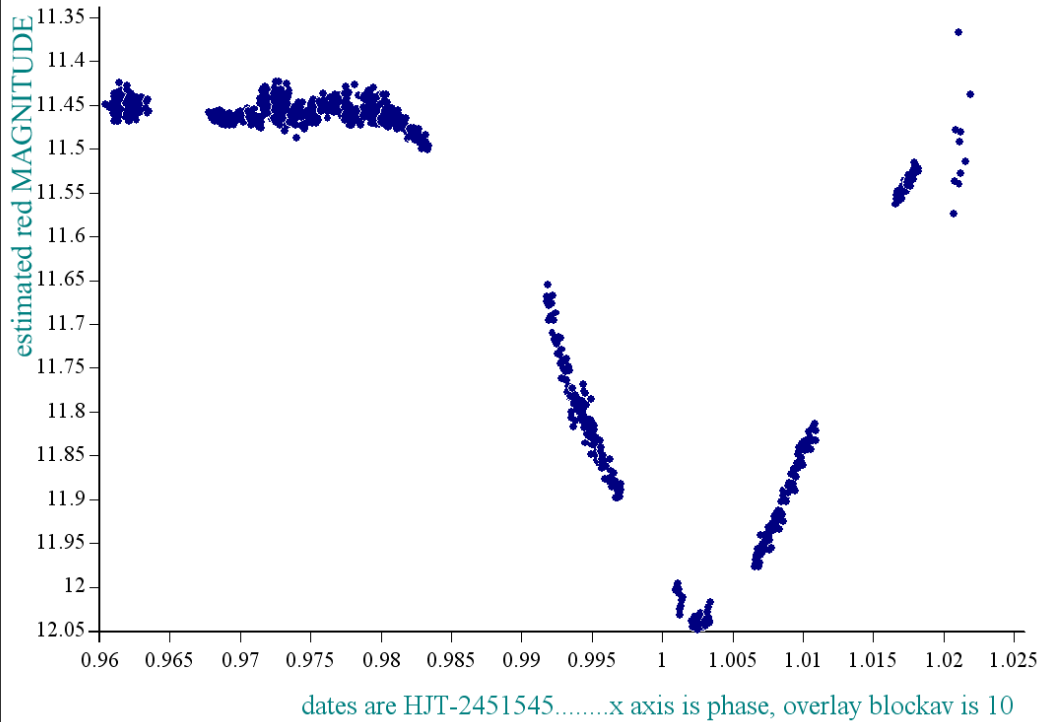
star a1732 dates 1344-2903, dia 10, ref a593, epoch 1204.015, period 50.83



star a1732 dates 1344-2903, dia 10, ref a593, epoch 1204.015, period 50.83

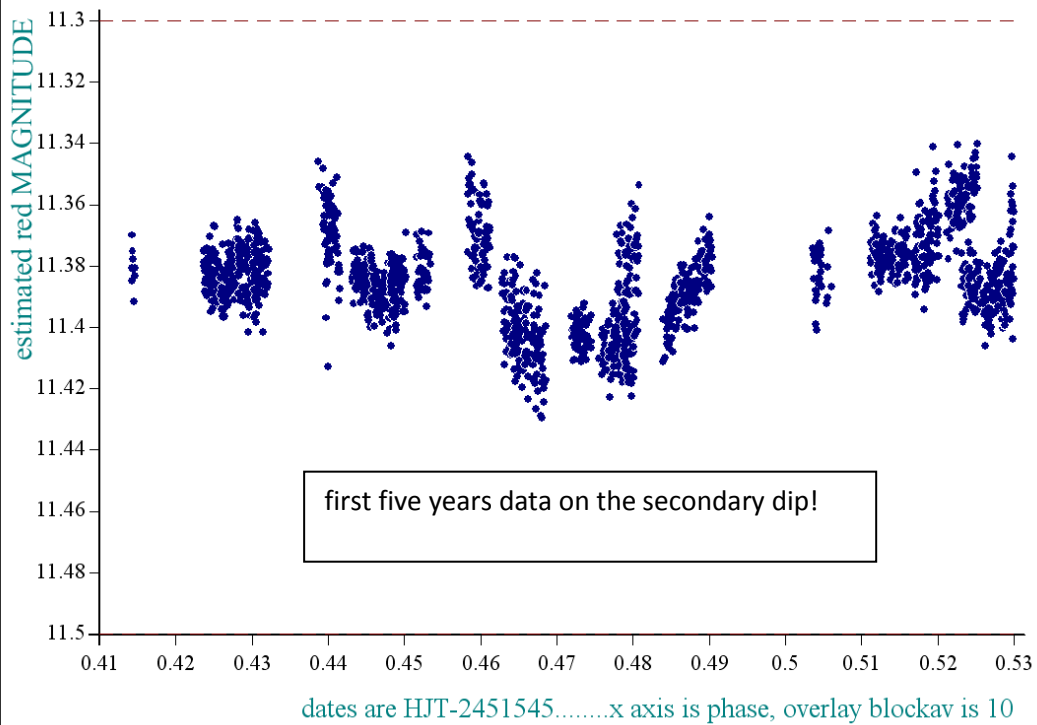


*star a1732 dates 1344-2903, dia 10, ref a313, epoch 1204, period 50.8235*



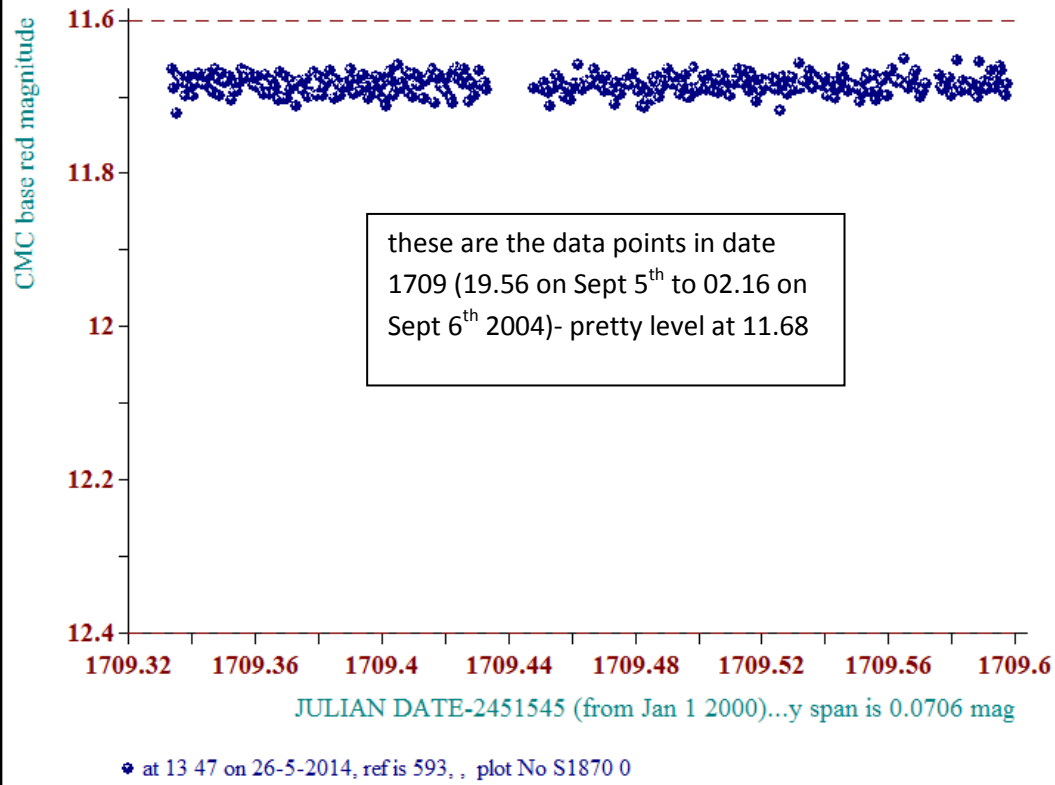
• created at 8 49 on 23-8 -2008 phase plot, No of data points 47748, plot No S18682

*star a1732 dates 1344-2903, dia 10, ref a593, epoch 1204, period 50.83*

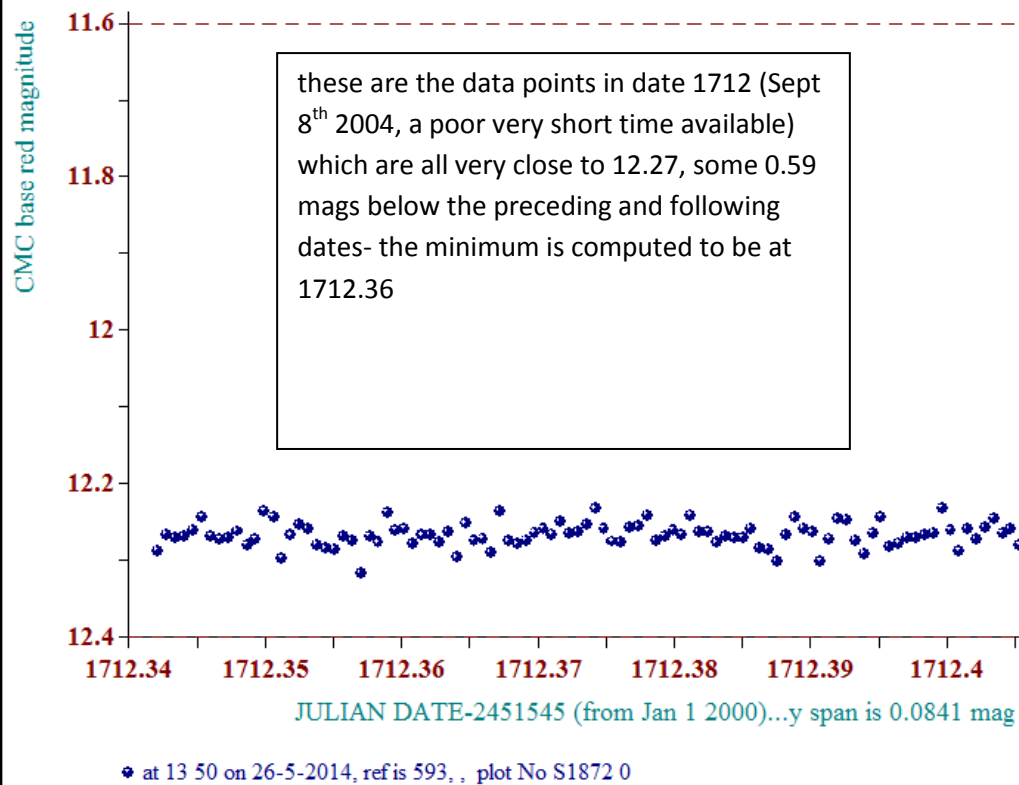


• created at 7 45 on 23-8 -2008 phase plot, No of data points 47521, plot No S18622

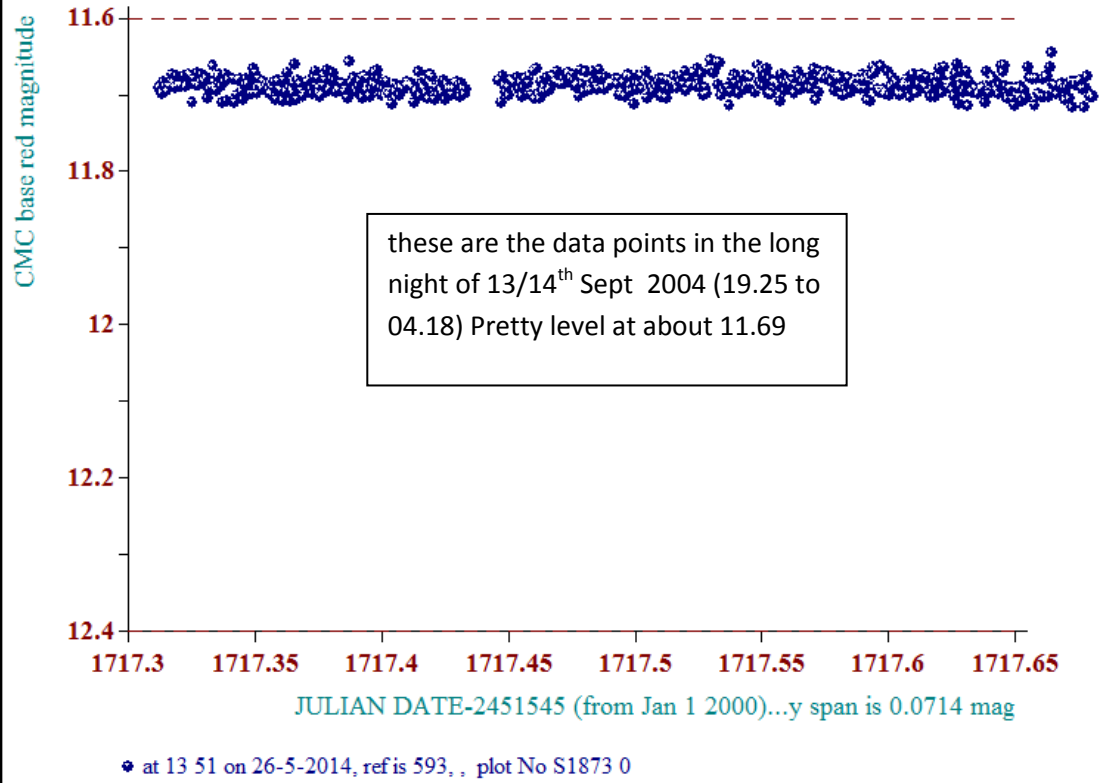
**FIG 1923 - star a01732, refstar a00593**



**FIG 1925 - star a01732, refstar a00593**



**FIG 1926 - star a01732, refstar a00593**



**FIG 1932 - star a01732, refstar a00593**

