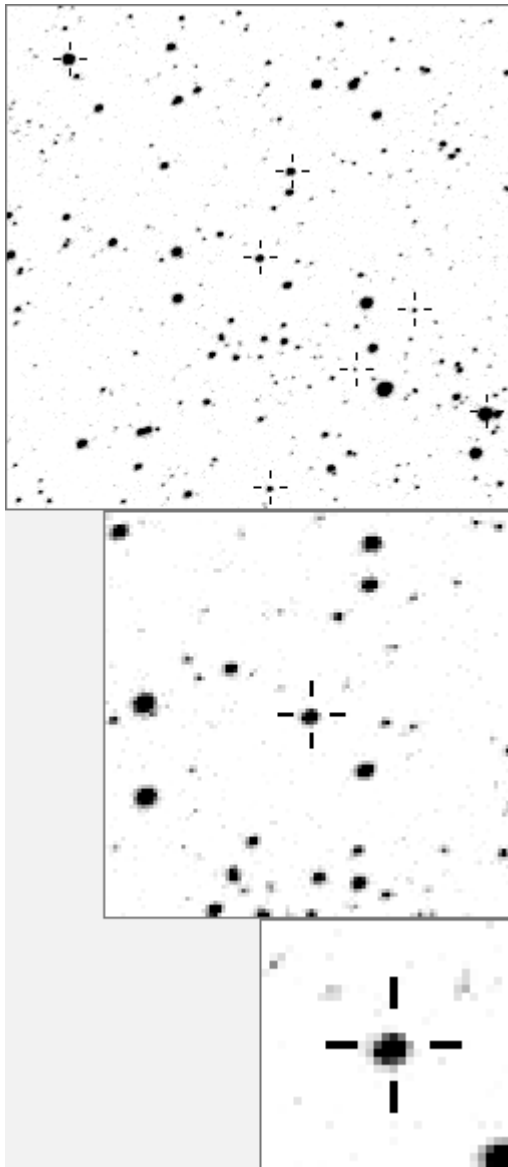


a05594



variable and brighter stars			
. l	O	5594	v
. e	a	233	
. f h	b	389	v
.	c	827	
. j	d	1046	
.	e	1293	v
.	f	2211	
. g . O	g	2214	
. i c	h	2435	
. n	i	2450	
. m	j	5254	v
. a	k	12601	v
. b	l	16901	v
. d	m	20751	v
. k	n	20889	v

e	O	5594	v
. c	a	2214	
. f	b	2450	
. n	c	5254	v
.	d	5432	
. i	e	5829	
. a	f	6526	
. O	g	7856	
.	h	9240	
. d	i	11666	
. b	j	11752	
.	k	14151	
. l m	l	16078	
. k j g	m	18364	
. h	n	19343	

Bitmap sizes are 251, 101 and 31 pixels square, South up. The keys to the right refer to the 1st two bitmaps. The numbers in the key are those in my catalogue 'starlistA'. Stars marked with a cross have been found to be variable.

Data and comments on star a05594

SWid: a05594 / USNO id: 1367 414597 / other id:

Co-ordinates, x,y in image z1051: 1220 2520.8
 J2000 sky co-ordinates: 21 5 10.27 46 47 59.79
 CMC r'magnitude and 2MASS J,H,K magnitudes: 12.76 11.642 11.502 11.386
 USNO B1.0 magnitudes, B1, R1, B2, R2, I2: 13.89 12.35 14.13 12.66 13.05

Misc comments :

1 July 08, a rpas star with sharp spikes down at 1462, 2148 plus one at 2146 plus decline from w to v, very odd. No dips in z, w or v, smooth to refs 132 and 233. Magm to 12.68, magr 0.67.

I tried putting baddays to zero to see if any more dips (ie artifacts) appeared but none did. It looks real but is hard to understand. If it's an eb the period must surely be long with no dips caught in 2004, 6 or 7 and yet there is a partial dip on 2146 and a strong one on 2148. Is it a random fader and is the decline (which again looks real) which may start in 2005 and continues through 2006 to 2007, significant?

Comparison reference star(s) co-ordinates:

a00132: 21 6 5.16 +46 49 59.21

a00233: 21 5 24.62 +46 50 36.91

Plots of the dip days are needed plus 2008 and 9 data- publish provisionally

Reminder:

All dates, JD and HJD are from Jan 1st 2000

season 1: dates 1316 to 1553 is 9/8/2003 to 3/4/2004 (a)

season 2: dates 1696 to 1838 is 23/8/2004 to 12/01/2005 (z)

season 3: dates 2085 to 2177 is 16/9/2005 to 17/12/2005 (y)

season 4: dates 2442 to 2755 is 8/9/2006 to 19/7/2007 (w)

season 5: dates 2772 to 2903 is 4/8/2007 to 13/12/2007 (v)

season 6: dates 2930 to 3266 is 9/1/2008 to 10/12/2008 (u)

season 7: dates 3403 to 3539 is 26/4/2009 to 10/9/2009 (t)

