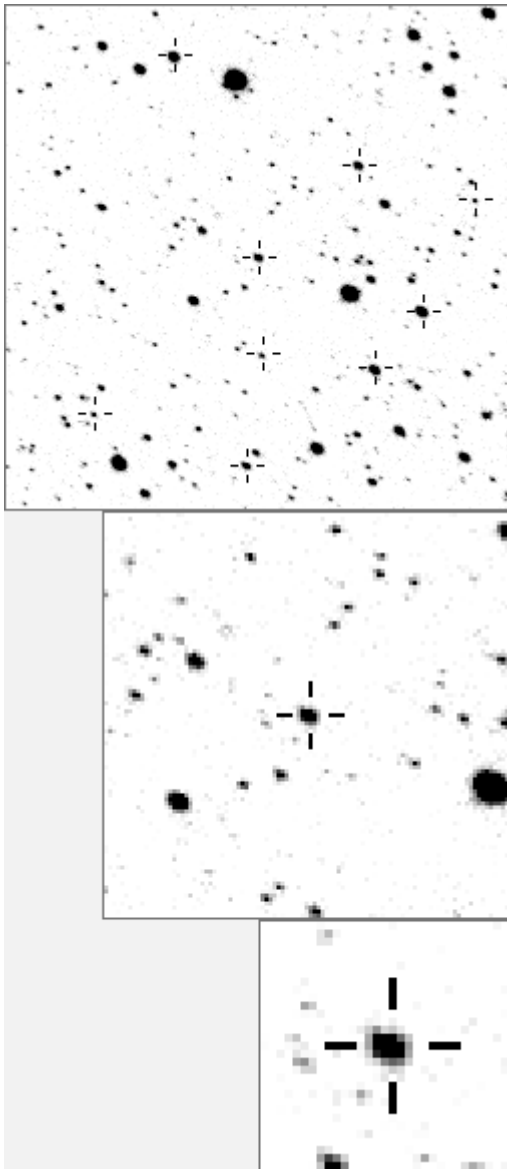


a05854—V585CYG



variable and brighter stars			
.	.	.	e . c
.	.	.	h
. f .
.
. j
. m .
.
. O
. a
. g
. l . i
.
.	.	.	n
. b k . d
.

.	.	.	O 5854 v
. j a 105
. k b 2399
.
. l c 6261
. f . c i e 17356
. h f 17688
. O m g g 18016
. h 18812
. e i 20100
. b . n a j 23660
. k 24513
. l 25313
. m 26815
. d n 27465
Bitmap sizes are 251, 101 and 31 pixels square, South up.			
The keys to the right refer to the 1 st two bitmaps. The			
numbers in the key are those in my catalogue 'starlistA'.			
Stars marked with a cross have been found to be variable.			

Data and comments on star a05854

SWid: a05854 / IRAS 21118+4 / other id: 9 V585 Cyg (L)

Co-ordinates, x,y in image z1051: 3404.3 2867.8

J2000 sky co-ordinates: 21 13 37.9 47 1 33.95

CMC r'magnitude and 2MASS J,H,K magnitudes: 12.759 6.623 5.583 5.1

USNO B1.0 magnitudes, B1,R1,B2,R2,I2: 16.68 12.89 16.44 12.36 9.54

Misc comments :

GCVS5 85, looks about 85d, m12.2/ 12.75 to 311 over 5yr, about 0.55 mag

Comparison reference star(s) co-ordinates:

311: 21 13 48.45 47 2 13.15

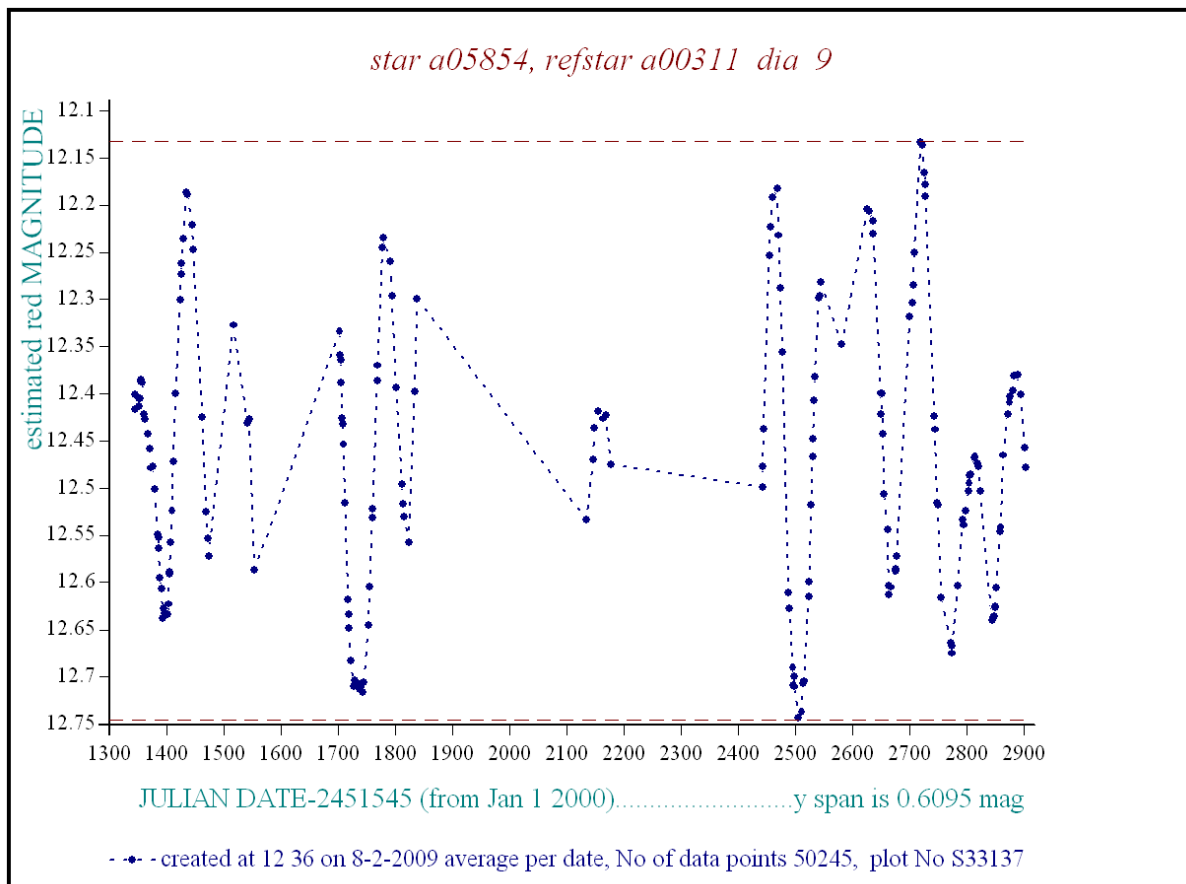
105: 21 13 21.96 47 5 39.15

Another 2 year of data available

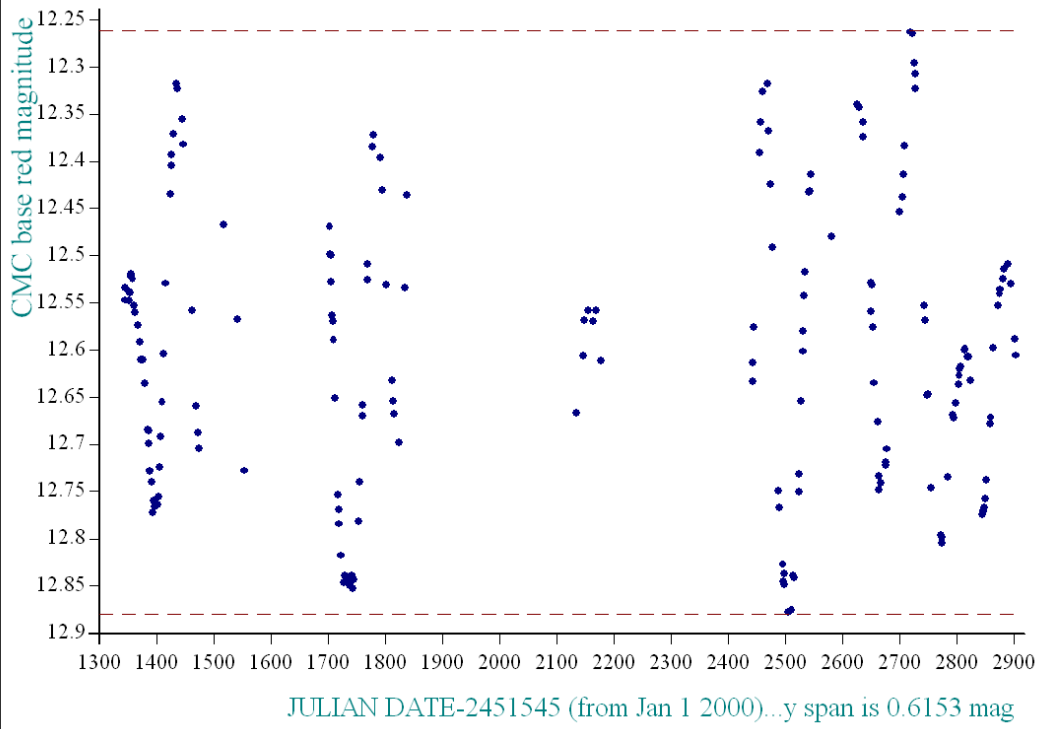
Reminder:

All dates, JD and HJD are from Jan 1st 2000

- season 1: dates 1316 to 1553 is 9/8/2003 to 3/4/2004 **(a)**
- season 2: dates 1696 to 1838 is 23/8/2004 to 12/01/2005 **(z)**
- season 3: dates 2085 to 2177 is 16/9/2005 to 17/12/2005 **(y)**
- season 4: dates 2442 to 2755 is 8/9/2006 to 19/7/2007 **(w)**
- season 5: dates 2772 to 2903 is 4/8/2007 to 13/12/2007 **(v)**
- season 6: dates 2930 to 3266 is 9/1/2008 to 10/12/2008 **(u)**
- season 7: dates 3403 to 3539 is 26/4/2009 to 10/9/2009 **(t)**



star a05854, refstar a00105 dia 9



• created at 20 29 on 26-4-2009 average per date, No of data points 50305, plot No S36246