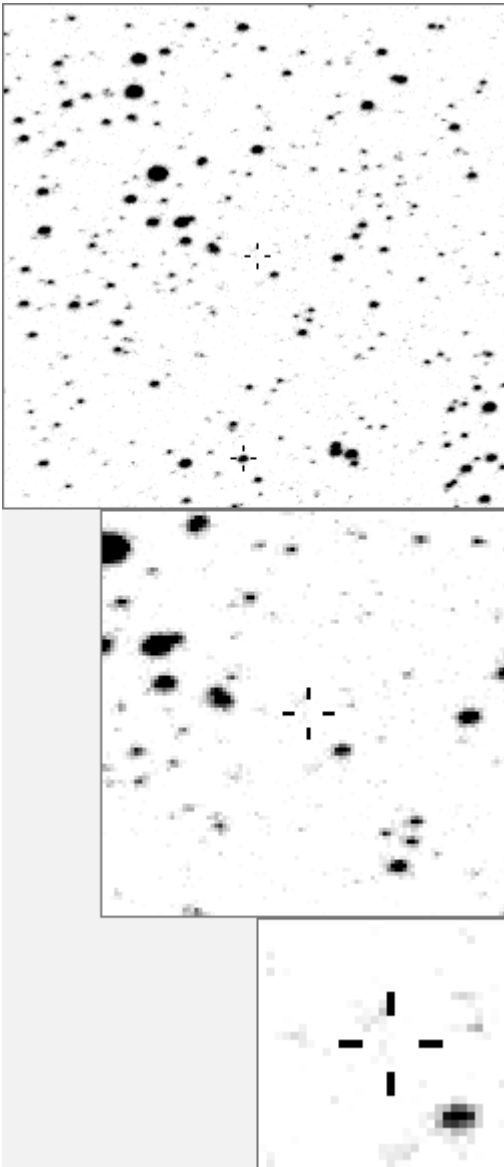


a12001



variable and brighter stars		
.	O 12001 v
.	c	a 253
.	b	b 567
.	c 1289
.	d 1514
.	m a	e 1599
.	k	f 2324
.	g 2518
.	h 3111
.	i 3119
.	j 3561
.	k 3608
.	l 3746
.	m 3820
.	n 8513 v
-----		- -
.	f	O 12001 v
a	a 253
.	b 1599
j	c 4979
.	i	d 5041
.	e 5677
.	d e	f 6121
.	g 7985
.	h 11067
.	i 11430
.	j 16613
.	k 17342
.	l 17844
.	m 21612
.	n 22352

Bitmap sizes are 251, 101 and 31 pixels square, South up. The keys to the right refer to the 1st two bitmaps. The numbers in the key are those in my catalogue 'starlistA'. Stars marked with a cross have been found to be variable.

Data and comments on star a12001

SWid: a12001 / **USNO id: 0 0 / other id: IRAS 21004+4608**

Co-ordinates, x,y in image z1051: 433.6 1840.7

J2000 sky co-ordinates: 21 2 11.84 +46 20 28.49

CMC r'magnitude and 2MASS J,H,K magnitudes: 16.985 8.114 6.906 6.216

USNO B1.0 magnitudes, B1,R1,B2,R2,I2: 0 0 0 0 0

Misc comments :

lrv, rising series of maxima, to 253 variation m14.5 to m19.5 maxima are at 1374 1746 2146 2518 2890 giving spacings of:

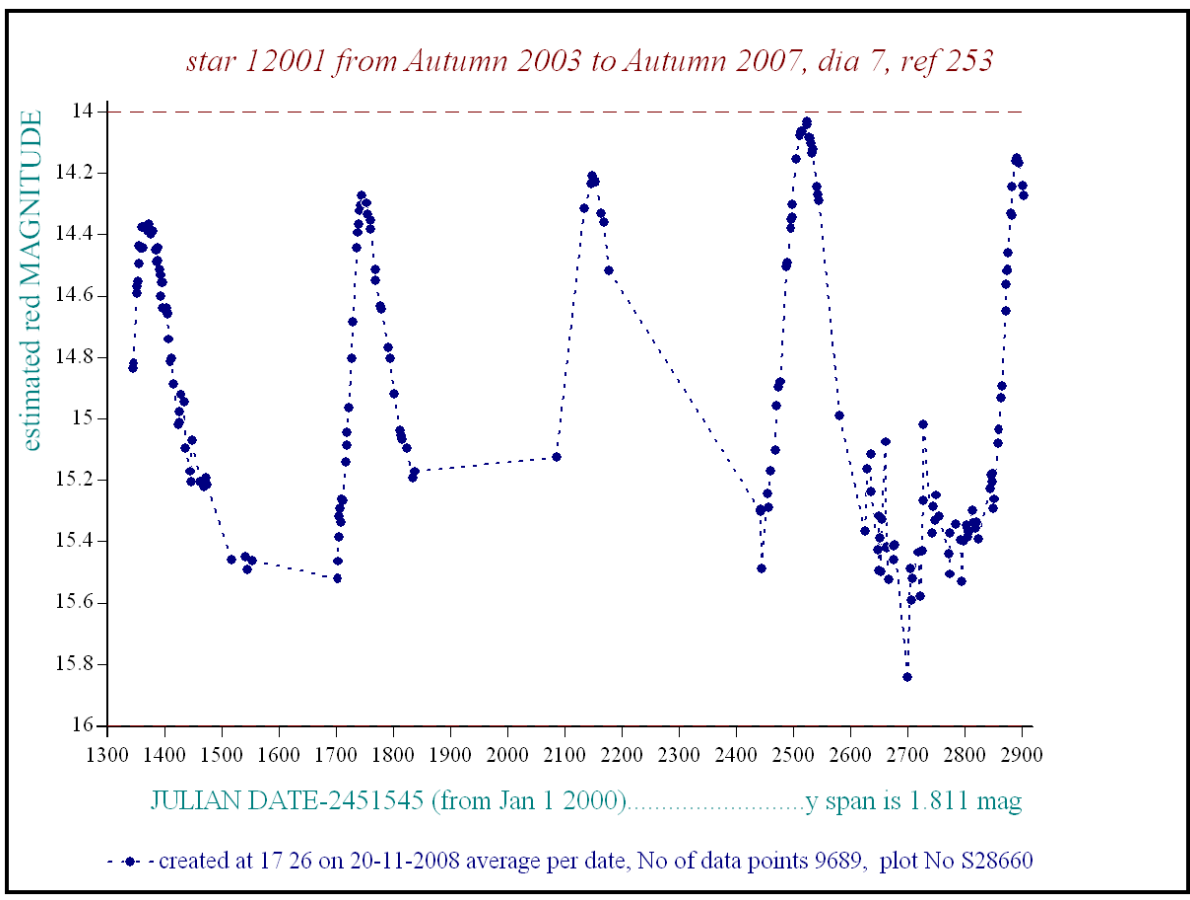
372 400 372 372 days

Comparison reference star(s) co-ordinates:

a00253: 21 2 0.96 +46 18 46.28

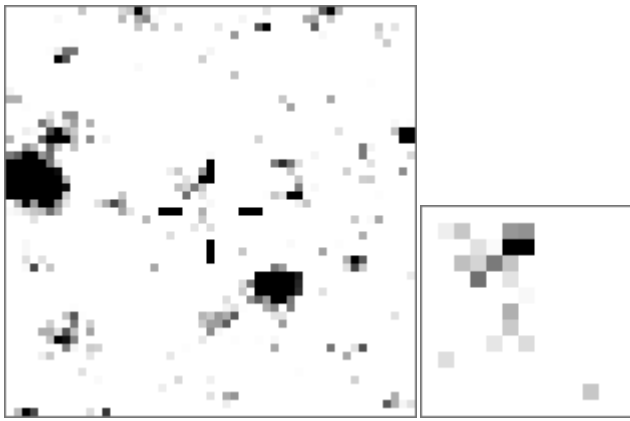
Reminder: **All dates, JD and HJD are from Jan 1st 2000**

- season 1: dates 1316 to 1553 is 9/8/2003 to 3/4/2004 **(a)**
- season 2: dates 1696 to 1838 is 23/8/2004 to 12/01/2005 **(z)**
- season 3: dates 2085 to 2177 is 16/9/2005 to 17/12/2005 **(y)**
- season 4: dates 2442 to 2755 is 8/9/2006 to 19/7/2007 **(w)**
- season 5: dates 2772 to 2903 is 4/8/2007 to 13/12/2007 **(v)**
- season 6: dates 2930 to 3266 is 9/1/2008 to 10/12/2008 **(u)**
- season 7: dates 3403 to 3539 is 26/4/2009 to 10/9/2009 **(t)**



21 02 11.97 46 20 26.8 iras
21 02 11.971 46 20 28.65 CMC

This star has close faint companions as can be seen on the very stretched cut below



Although very faint the stars near 12001 are brighter than when it is at minimum. The left sample is 2 arc-min square, the right is just 30 arc-sec square. Both are stretched to 0.06% of the camera's dynamic range

(note for sw, 2004 peak in 1752, z7500)

period about 380days

