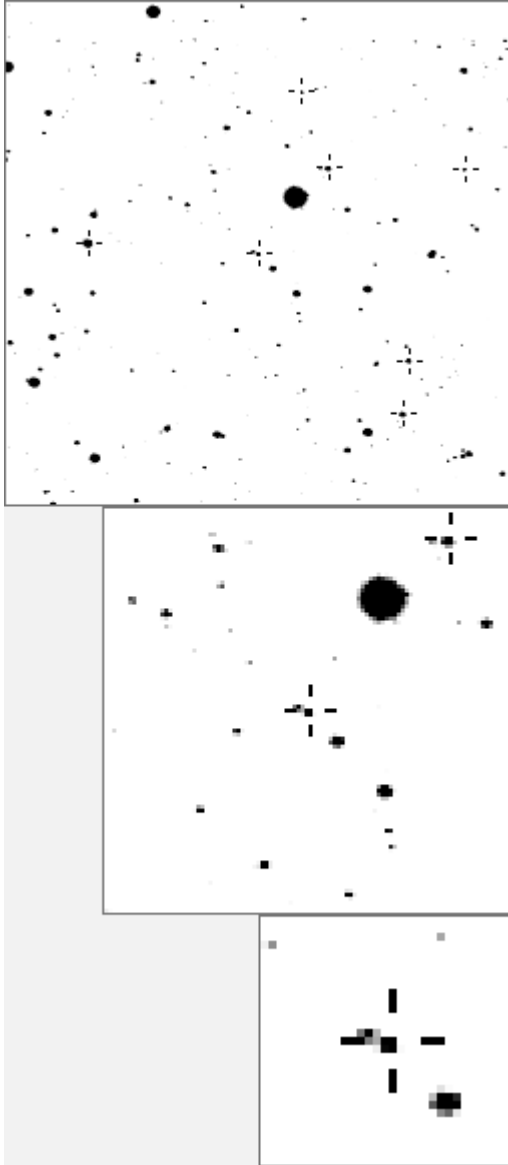


a14924



variable and brighter stars

. a	O 14924 v
.	a 381
. n	b 912
.	c 1276
. k	d 2167
. m .	e 2493
.	f 2927
. . i O h . .	g 3813
e f	h 4025
. l . . .	i 6077 v
b	j 6542 v
. g d j	k 8442 v
. c	l 9224 v
.	m 18480 v
.	n 19797 v

.	O 14924 v
. g c . . .	a 4114
.	b 6189
. k f n	c 8442 v
. d	d 10184
.	e 12145
.	f 13687
.	g 13916
. j b	h 17271
.	i 19436
. a	j 20096
. i	k 20449
. l	l 20823
. e	m 21538
. h	n 21546

Bitmap sizes are 251, 101 and 31 pixels square, South up. The keys to the right refer to the 1st two bitmaps. The numbers in the key are those in my catalogue 'starlistA'. Stars marked with a cross have been found to be variable.

Data and comments on star a14924

SWid: a14924 / **USNO id: 1361 399812 / other id:**

Co-ordinates, x,y in image z1051: 2378.8 1576.1

J2000 sky co-ordinates: 21 9 38.8 +46 10 40.19

CMC r'magnitude and 2MASS J, H, K magnitudes: 13.972 12.466 0 0

USNO B1.0 magnitudes, B1, R1, B2, R2, I2: 14.77 12.61 14.9 13.96 0

Misc comments :

Lot of work done on this. The variable star is the companion of 14924, not the one with the cross through it, R calls it 14924B. It has a 2mass entry. To ref 4114 magm is 13.2 and magr 1.2.

Period approximately 300 days.

Comparison reference star(s) co-ordinates:

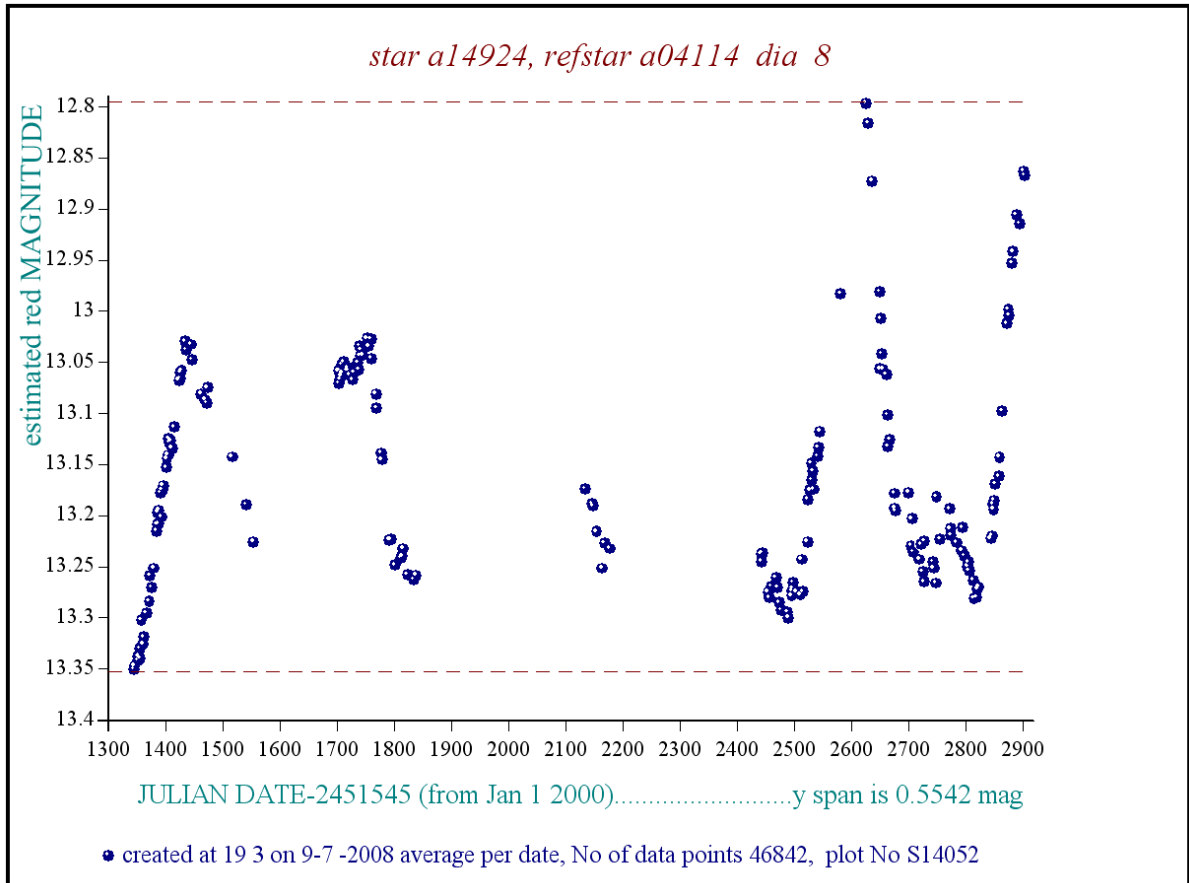
a04114: 21 9 43.22 +46 11 27.06

colour temp estimate: 5598 K

CMC mags, more years are needed plus R report

Reminder: **All dates, JD and HJD are from Jan 1st 2000**

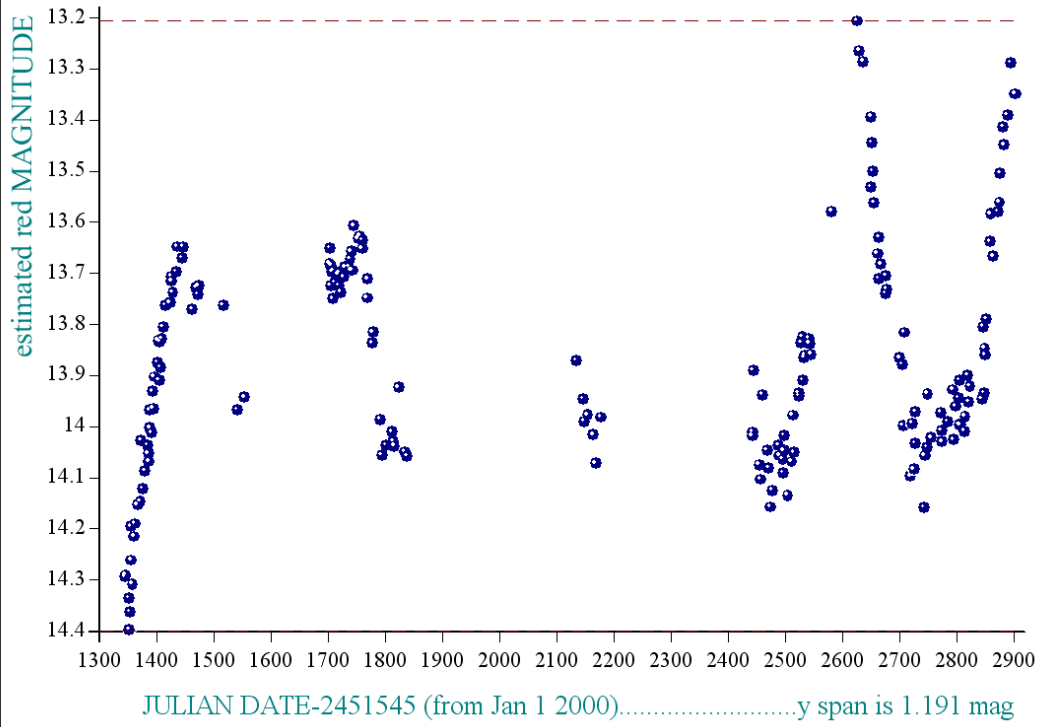
season 1: dates 1316 to 1553 is 9/8/2003 to 3/4/2004	(a)
season 2: dates 1696 to 1838 is 23/8/2004 to 12/01/2005	(z)
season 3: dates 2085 to 2177 is 16/9/2005 to 17/12/2005	(y)
season 4: dates 2442 to 2755 is 8/9/2006 to 19/7/2007	(w)
season 5: dates 2772 to 2903 is 4/8/2007 to 13/12/2007	(v)
season 6: dates 2930 to 3266 is 9/1/2008 to 10/12/2008	(u)
season 7: dates 3403 to 3539 is 26/4/2009 to 10/9/2009	(t)



It turns out that the variable one is the companion star which has no number in my catalogue. It can be measured fairly well with enough effort (not yet done) but a quick estimate is easy. By subtracting the flux within a 3 by 3 pixel box around the centred star from a 10 diameter circle the span is increased from 0.55mag in the image above to 1.19 as below and that is a slight underestimate I'd guess.

Trying to identify it gets interesting. The centroid of 14294b can be accurately measured and hence it's ra and dec in the sub image above (from 2004) The result is J2000 21 9 38.21 +46 10 36.9

star a14924, refstar a04114 dia 10



• created at 23 56 on 9-7 -2008 average per date, No of data points 46707, plot No S14058