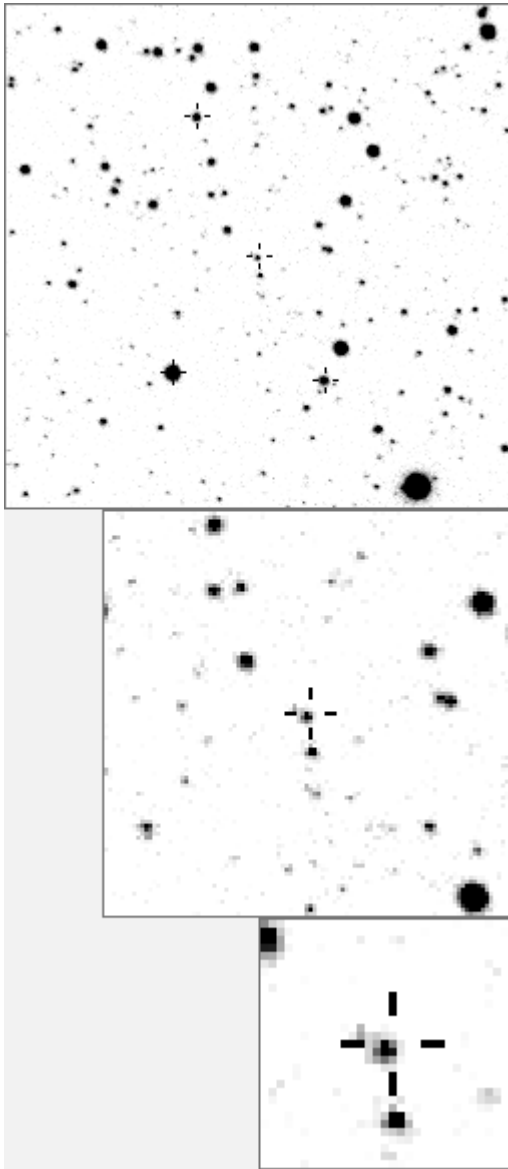


a16718= NSV25474



variable and brighter stars		
.	b O 16718 v
. . g . . m . k	a 418 v
. h	b 430
. n e	c 518
l d	d 1235
. f	e 1637
.	f 2032
.	g 3057
.	h 3460
.	i 3517
.	j 3847 v
. a c	k 3956
.	l 4046
.	m 4353
.	n 7040 v

. d	O 16718 v
.	a 518
. g j	b 2032
.	c 8005
.	d 8694
.	e 10905
.	f 12574
.	g 14440
.	h 17134
.	i 18802
.	j 19010
. l	k 21627
.	l 21691
.	m 26847
.	n 30812

Bitmap sizes are 251, 101 and 31 pixels square, South up. The keys to the right refer to the 1st two bitmaps. The numbers in the key are those in my catalogue 'starlistA'. Stars marked with a cross have been found to be variable.

Data and comments on star a16718

SWid: a16718 / **USNO id: 1356 413640 / other id: NSV 25474**

Co-ordinates, x,y in image z1051: 1569.6 704.3

J2000 sky co-ordinates: 21 6 34.54 +45 36 0.7

CMC r'magnitude and 2MASS J, H, K magnitudes: 14.202 9.267 7.862 0

USNO B1.0 magnitudes, B1, R1, B2, R2, I2: 18.94 12.72 17.47 13.68 0

Misc comments :

New, June 2009, red var, very int one, period 130-150d, r observed 430mmag

J2000 co-ordinates: 21 6 34.52 +45 36 1.1

Colour temp estimate: 3457 °K

Comparison reference star(s) co-ordinates:

a00518: 21 6 43.91 +45 37 47.94

a08005: 21 6 31.13 +45 35 27.19

2008,9 data needs to be added

The very close star 8005 makes a better ref and shows up the sinusoidal movement in 2003/4 which is less obvious using 518

Reminder: **All dates, JD and HJD are from Jan 1st 2000**

season 1: dates 1316 to 1553 is 9/8/2003 to 3/4/2004 (a)

season 2: dates 1696 to 1838 is 23/8/2004 to 12/01/2005 (z)

season 3: dates 2085 to 2177 is 16/9/2005 to 17/12/2005 (y)

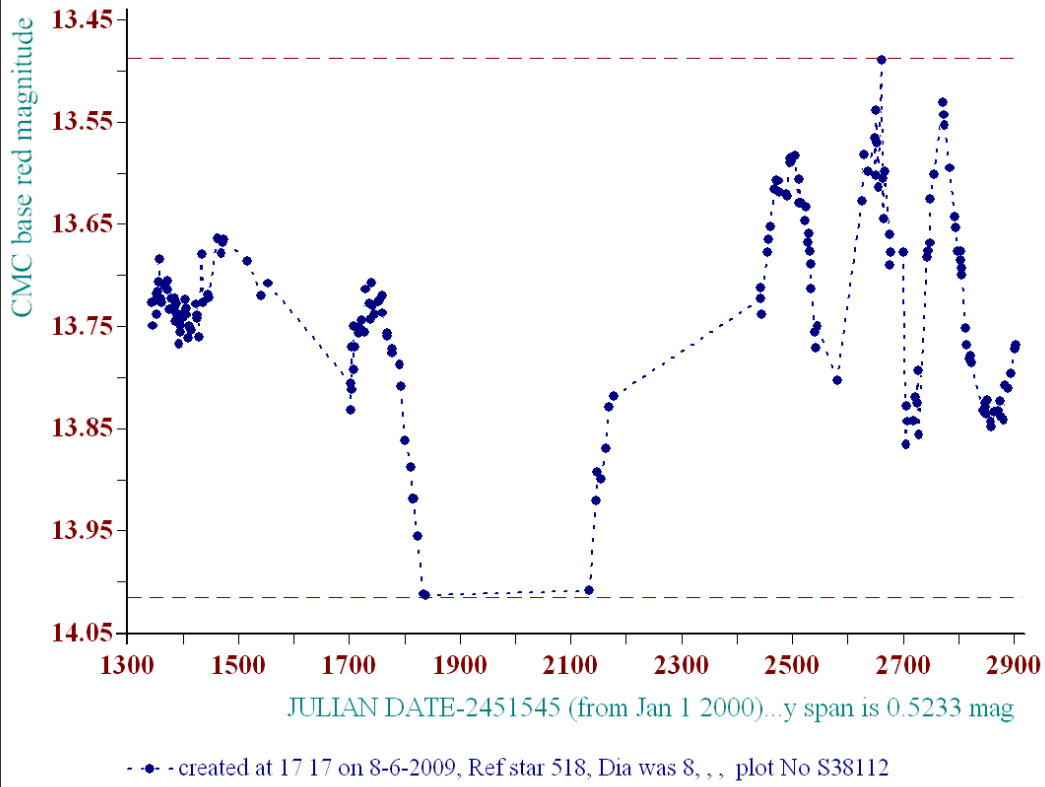
season 4: dates 2442 to 2755 is 8/9/2006 to 19/7/2007 (w)

season 5: dates 2772 to 2903 is 4/8/2007 to 13/12/2007 (v)

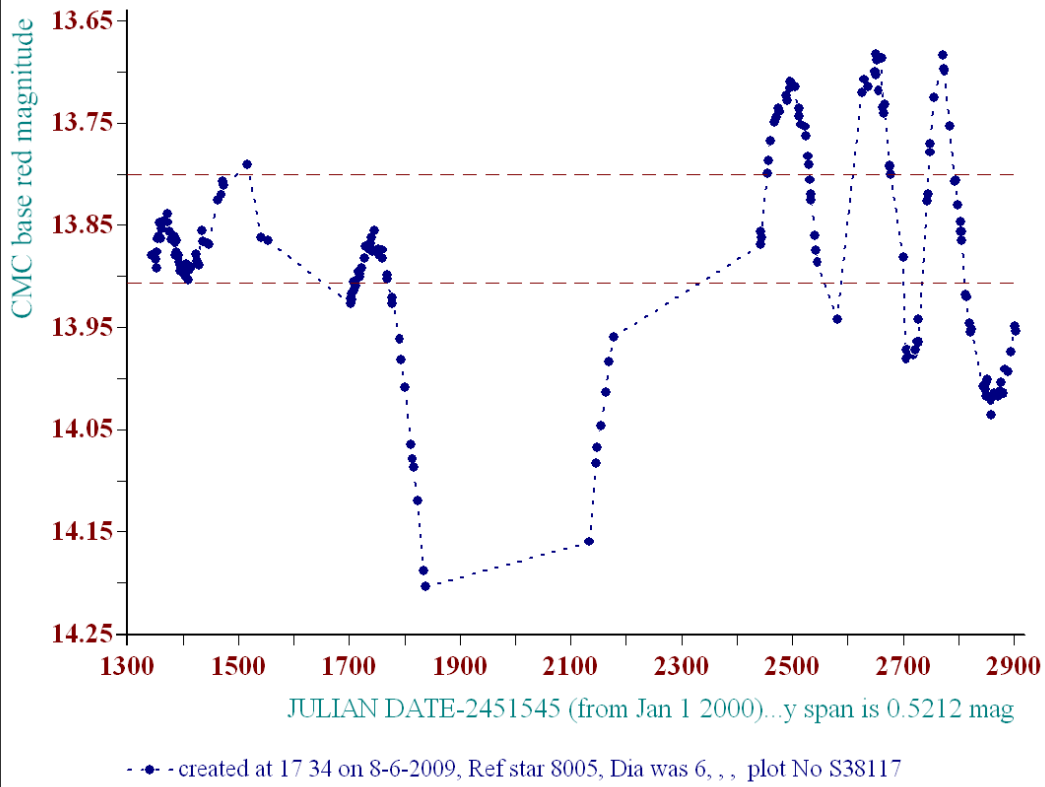
season 6: dates 2930 to 3266 is 9/1/2008 to 10/12/2008 (u)

season 7: dates 3403 to 3539 is 26/4/2009 to 10/9/2009 (t)

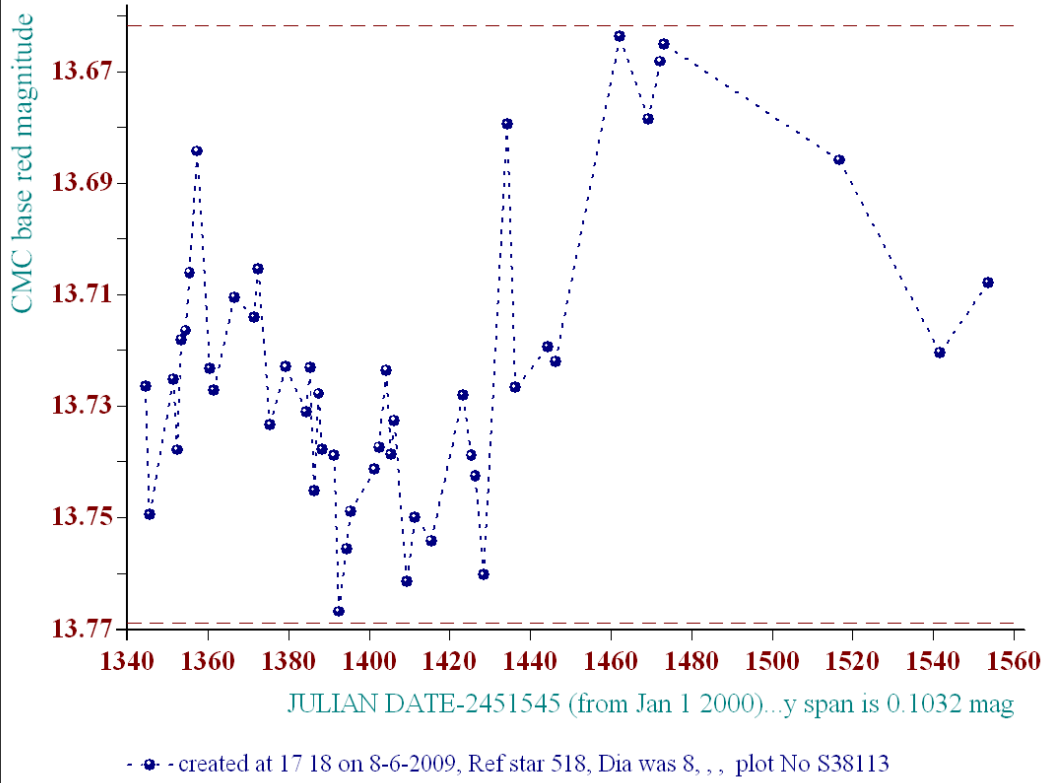
Average per date plot, star a16718



Average per date plot, star a16718



Average per date plot, star a16718



Average per date plot, star a16718

