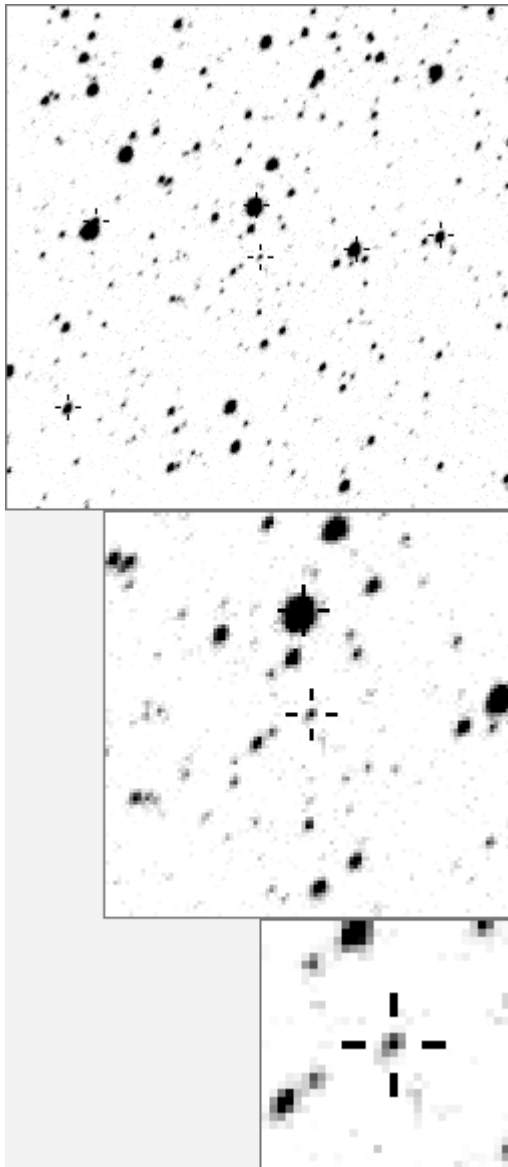


a18336



variable and brighter stars	
. . . . .	O 18336 v
. . . . . g . . . . d . .	a 139
. . h . . . . .	b 220 v
. . . . .	c 456
. . . c . . . i . . . . .	d 643
. . . . . b . . . . . n	e 866 v
. . l . . . . . j . . .	f 1256
. . . . . O . . e . . . .	g 1431
. . . . .	h 1445
. . . . .	i 1956
. . . . .	j 2502 v
. . . . . f . . . . .	k 4121 v
. k . . . . .	l 6091 v
. . . . .	m 8181 v
. . . . . m	n 19514 v
-----	
. . . . . m . c . . . . .	O 18336 v
k . . . . .	a 220 v
. . . . . h . . . . .	b 866 v
. . . . . a . . . . .	c 1956
. . . g . . . . .	d 6923
. . . . . d . . . . .	e 7880
. . . . . . . . . . b	f 8331
. . . . . O . . . . .	g 8391
. . . . . l . . . . . f .	h 8872
. . . . .	i 9646
. n . . . . .	j 12076
. . . . .	k 12717
. . . . . j . . . . .	l 13779
. . . . . e . . . . .	m 14474
. . . . .	n 15765

Bitmap sizes are 251, 101 and 31 pixels square, South up. The keys to the right refer to the 1<sup>st</sup> two bitmaps. The numbers in the key are those in my catalogue 'starlistA'. Stars marked with a cross have been found to be variable.

**Data and comments on star a18336**

SWid: a18336 / **USNO id: 1375 476425 / other id:**

Co-ordinates, x,y in image z1051: 1252.4 3592.7

**J2000 sky co-ordinates: 21 5 15.51 +47 30 23.37**

CMC r'magnitude and 2MASS J, H, K magnitudes: 14.159 12.468 12.224 12.148

USNO B1.0 magnitudes, B1, R1, B2, R2, I2: 14.88 12.9 14.83 13.03 12.94

Misc comments :

This star is difficult, a Jul08 eb from rpas. When I use, in runoverlay, just the dates with mins (1371 1705 2164 2498 2530 2774 2803 2864) I'm pretty sure the period is

60.995 days with a phase difference of 0.525 and mins of 13.75 and 14.02 to ref 1256 and a max level of 13.2. However, using all dates I was unable to find the period, more study is needed.

By inspection I find a period between 60.97 and 60.99., pri mins on or near 1371 2164 2530 and 2774

Estimating the mins and using an O-C method would be better perhaps.  
Jan 09 another look but no progress, leave for now , prob need to check each date carefully

See book22 p29a,30

Comparison reference star(s) co-ordinates:

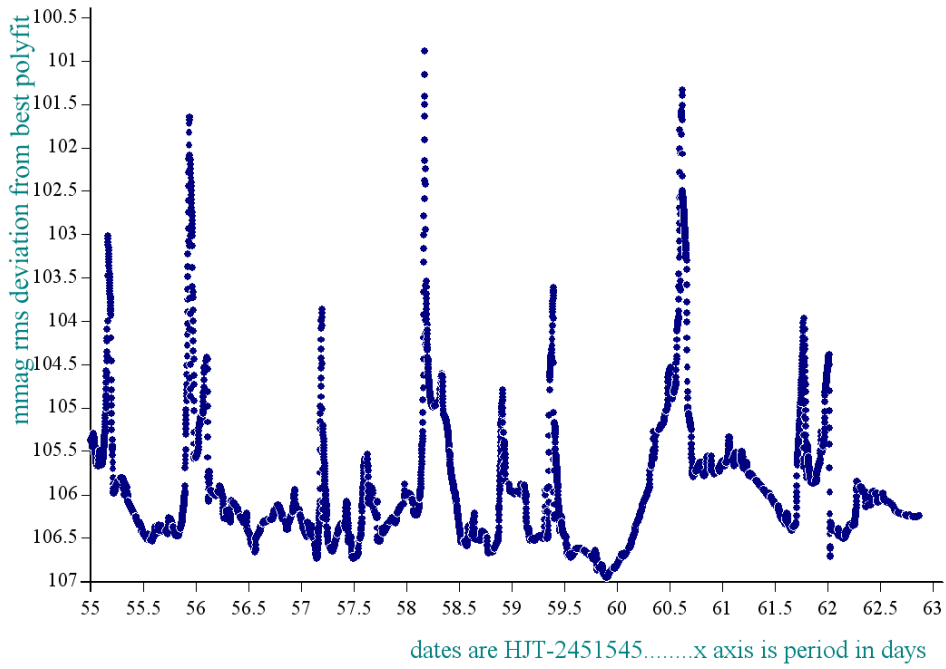
**a01256: 21 5 11.94 +47 33 18.33**

**More work needed plus CMC mags and more data from 2008/9. Poor quality phase plots need to be explained and improved.**

**Reminder: All dates, JD and HJD are from Jan 1<sup>st</sup> 2000**

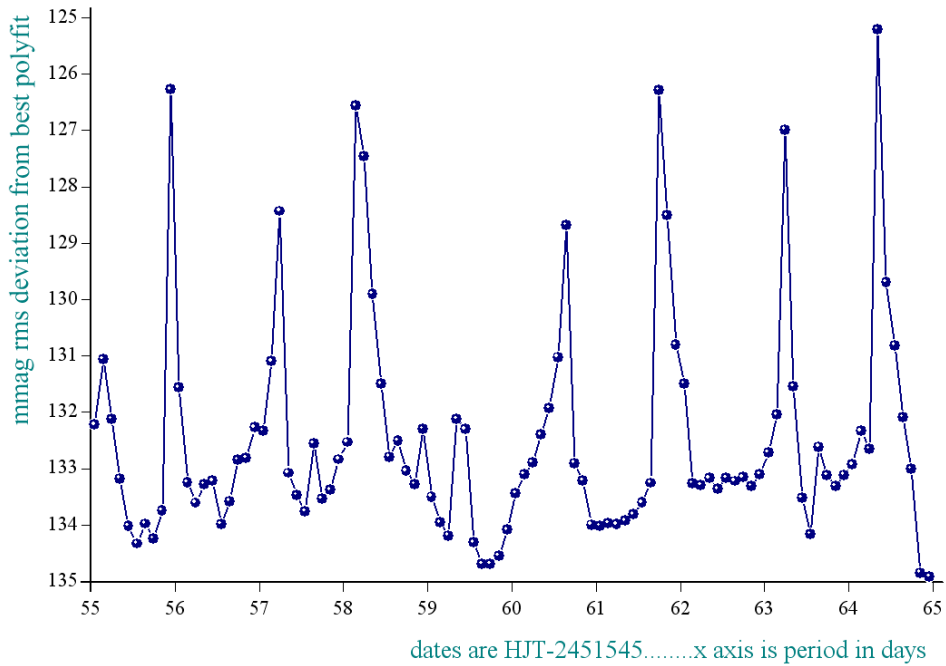
season 1: dates 1316 to 1553 is 9/8/2003 to 3/4/2004	<b>(a)</b>
season 2: dates 1696 to 1838 is 23/8/2004 to 12/01/2005	<b>(z)</b>
season 3: dates 2085 to 2177 is 16/9/2005 to 17/12/2005	<b>(y)</b>
season 4: dates 2442 to 2755 is 8/9/2006 to 19/7/2007	<b>(w)</b>
season 5: dates 2772 to 2903 is 4/8/2007 to 13/12/2007	<b>(v)</b>
season 6: dates 2930 to 3266 is 9/1/2008 to 10/12/2008	<b>(u)</b>
season 7: dates 3403 to 3539 is 26/4/2009 to 10/9/2009	<b>(t)</b>

*periodogram of star a18336 in dates 1344-2903, dia 8, ref a1256*

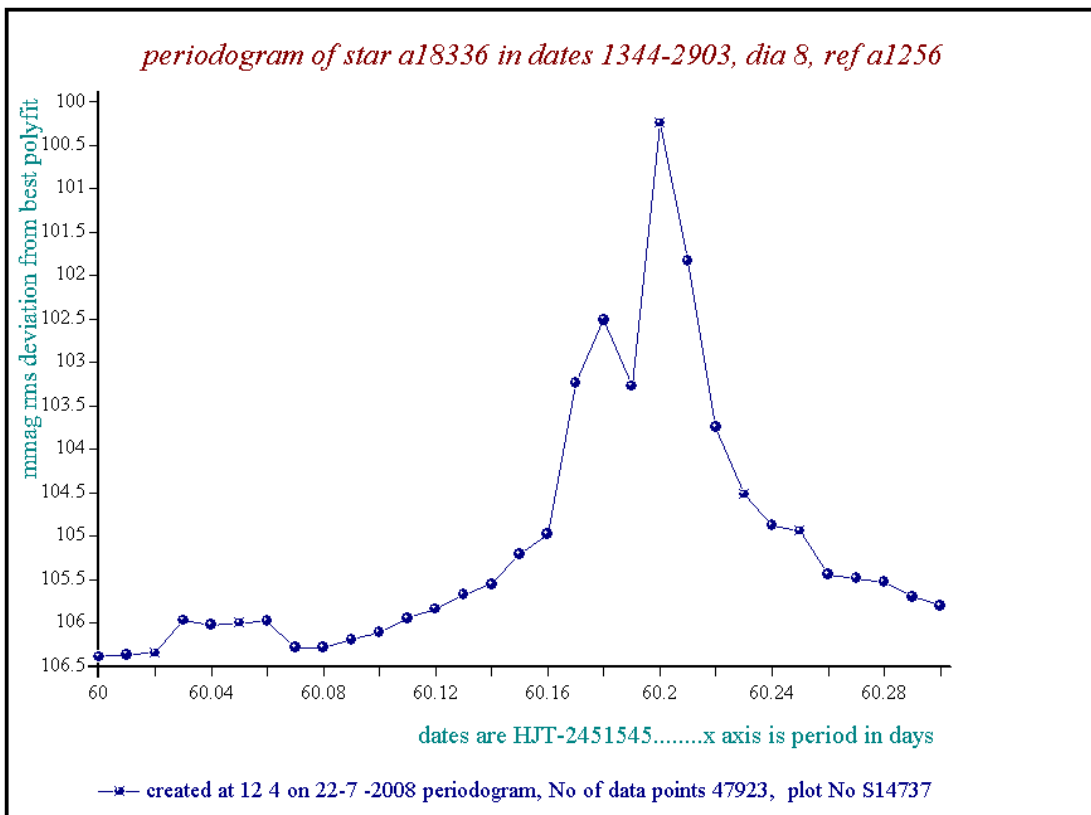
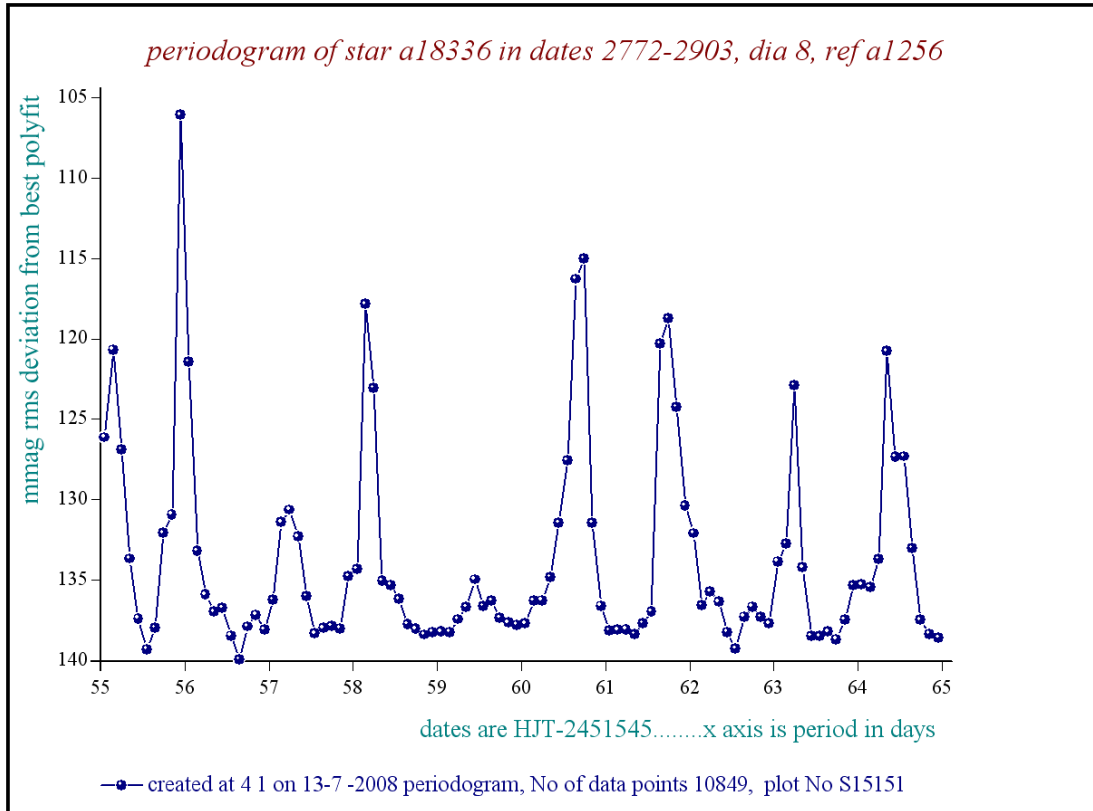


• created at 3 55 on 13-7 -2008 periodogram, No of data points 47923, plot No S15149

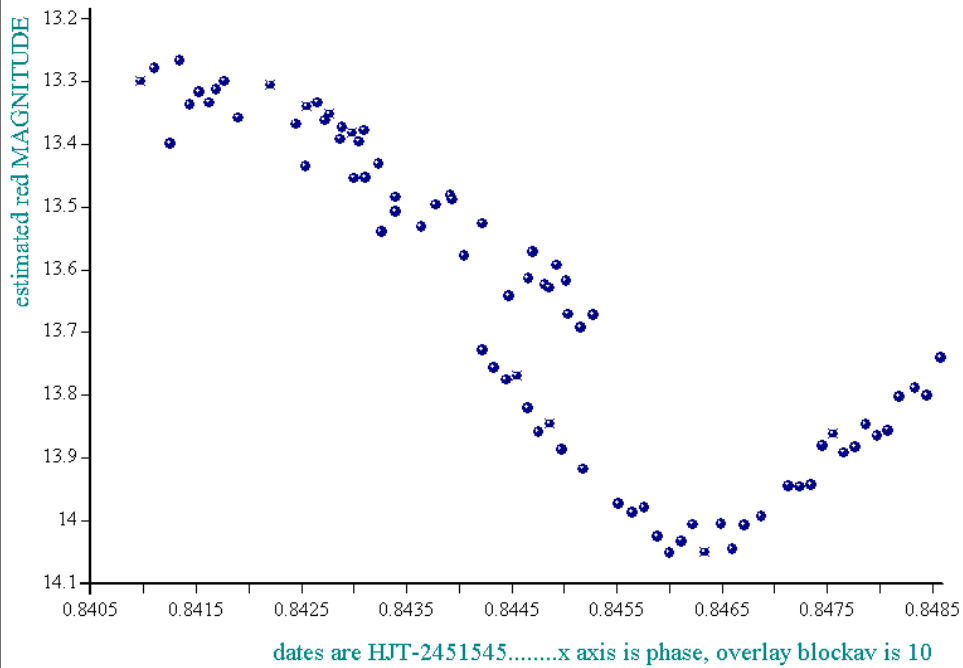
*periodogram of star a18336 in dates 2442-2903, dia 8, ref a1256*



—•— created at 4 7 on 13-7 -2008 periodogram, No of data points 25509, plot No S15152

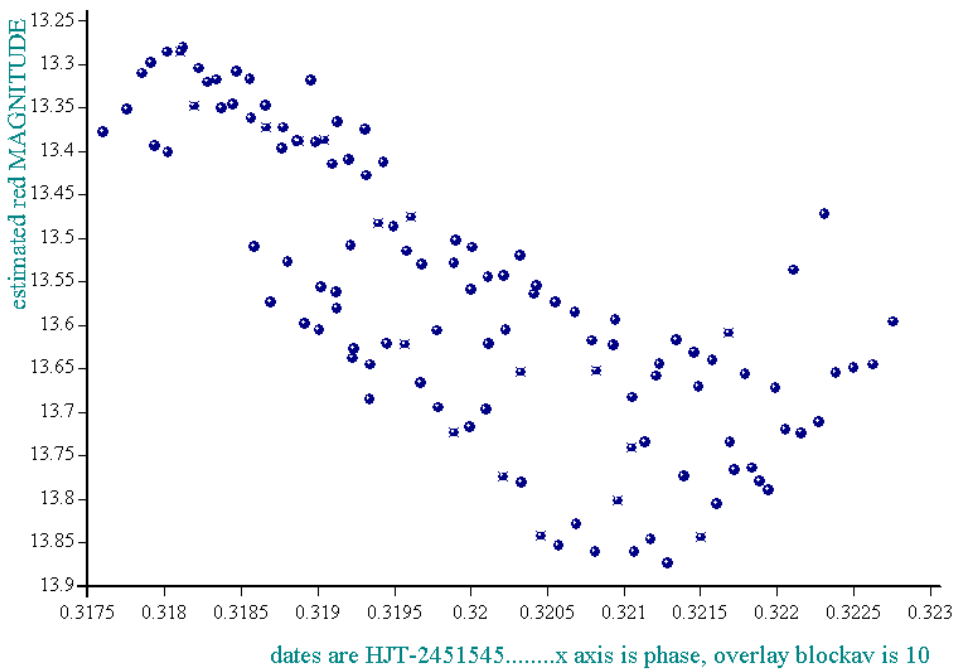


*star a18336 in dates 1371-2864, dia 8, ref a1256, epoch is 1320, period is 60.995*



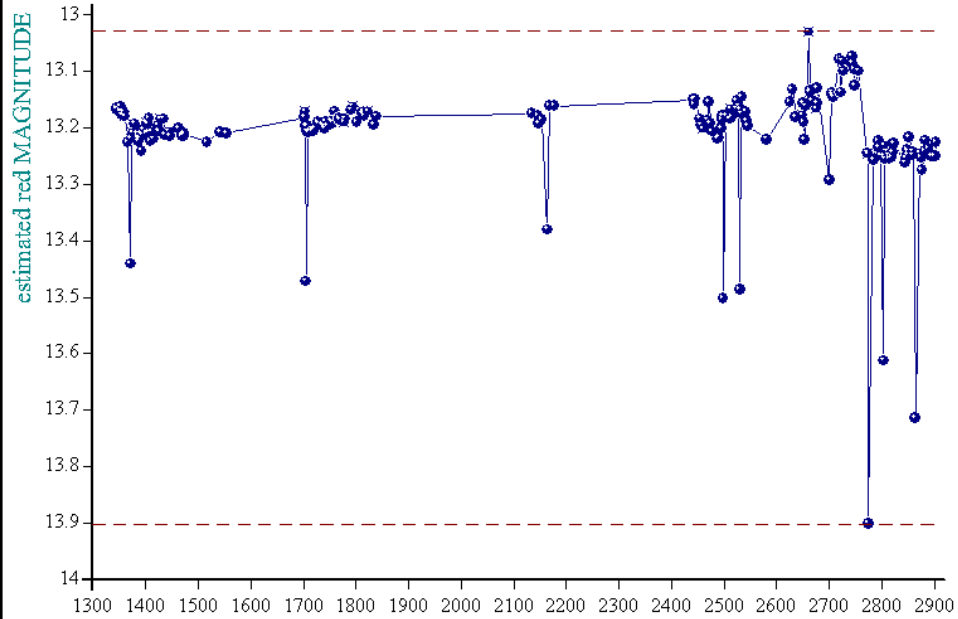
• created at 19 14 on 22-7 -2008 phase plot, No of data points 1954, plot No S14878

*star a18336 in dates 1371-2864, dia 8, ref a1256, epoch is 1320, period is 60.995*



• created at 19 11 on 22-7 -2008 phase plot, No of data points 1954, plot No S14876

*star a18336, refstar a01256 dia 8*



—\*— created at 9 16 on 22-7 -2008 average per date, No of data points 46681, plot No S14647