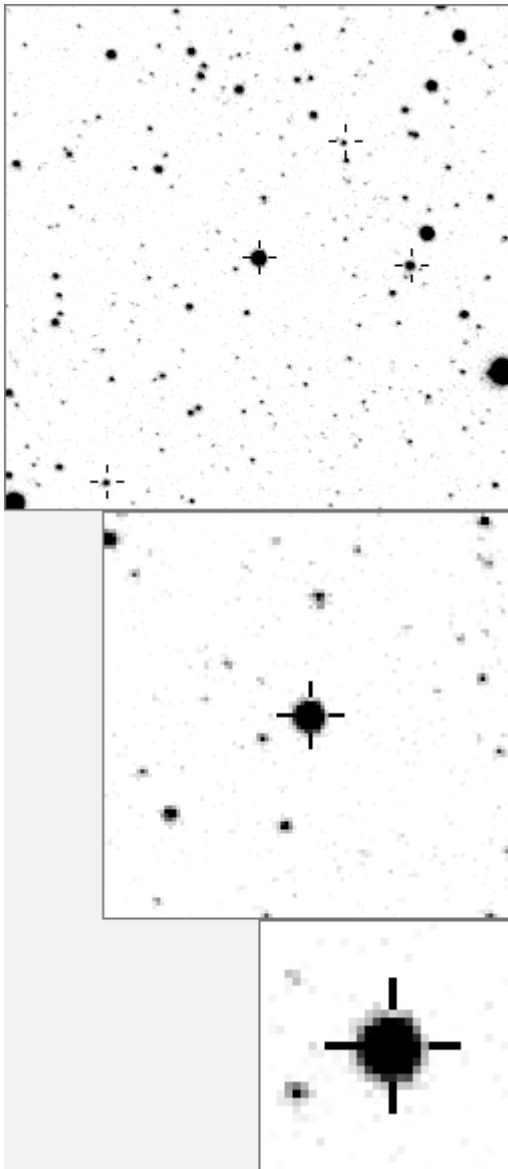


a00418



variables& brighter stars			
. c .	O	418	v
. . . f . i	a	27	
. g d . .	b	518	
. l	c	1235	
. j n	d	2032	
.	e	3847	v
. b . . .	f	4046	
. O e . .	g	4949	
.	h	6319	
. k h . .	i	6594	
.	j	6952	
.	k	7482	
.	l	8005	
.	m	9895	v
a . m	n	16718	v

. b	O	418	v
. j l i	a	10230	
. h	b	17134	
. d	c	18908	
. n .	d	21691	
. m	e	23786	
. f .	f	26847	
. O	g	28075	
. e k	h	31808	
. g	i	33719	
.	j	34456	
. . a c	k	36953	
.	l	39061	
.	m	39336	
.	n	41335	

Data Bitmap sizes are 251, 101 and 31 pixels square, South up. The keys to the right refer to the 1st two bitmaps. The numbers in the key are those in my catalogue 'starlistA'

Data and comments on star a00418

SWid: a00418 / **USNO id: 3588 518501 / other id:**
 Co-ordinates, x,y in image z1051: 1527.3 761.6
 J2000 sky co-ordinates: **21 6 24.84 +45 38 16.02**
 CMC r' magnitude and 2MASS J,H,K magnitudes: 10.417 6.531 5.522 5.13
 USNO B1.0 magnitudes, B1,R1,B2,R2,I2: 13.01 10.53 12.07 10.46 9.64
 Misc comments :
 Clearly variable, compare 518. Occ 15d periods, magm to 1235 is 10.12, magr 0.07
 checked .913 alias, not real Temp 3855K

Comparison reference star(s) co-ordinates:

a00448: **21 7 37.33 +45 40 12.56**

a01235: **21 6 47.75 +45 33 54.19**

Reminder: **All dates, JD and HJD are from Jan 1st 2000**

season 1: dates 1316 to 1553 is 9/8/2003 to 3/4/2004 (a)

season 2: dates 1696 to 1838 is 23/8/2004 to 12/01/2005 (z)

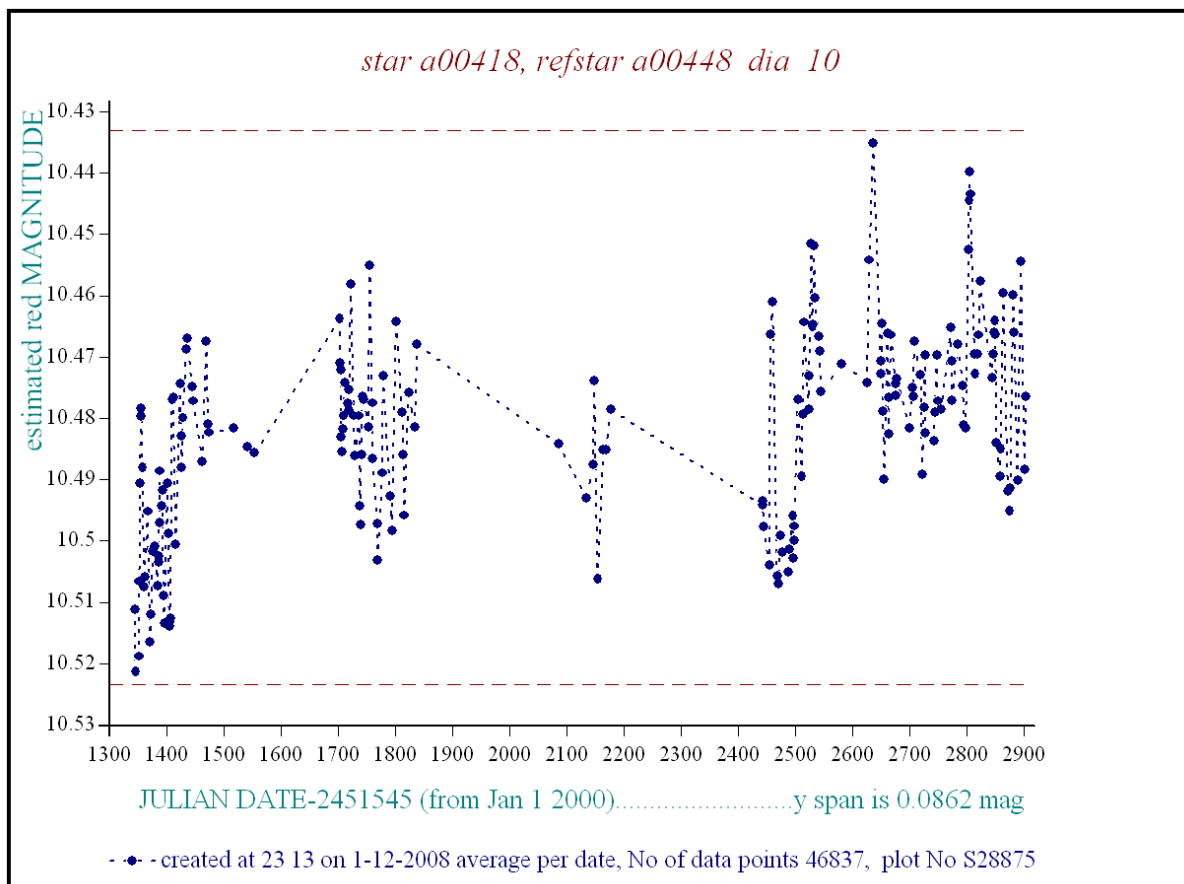
season 3: dates 2085 to 2177 is 16/9/2005 to 17/12/2005 (y)

season 4: dates 2442 to 2755 is 8/9/2006 to 19/7/2007 (w)

season 5: dates 2772 to 2903 is 4/8/2007 to 13/12/2007 (v)

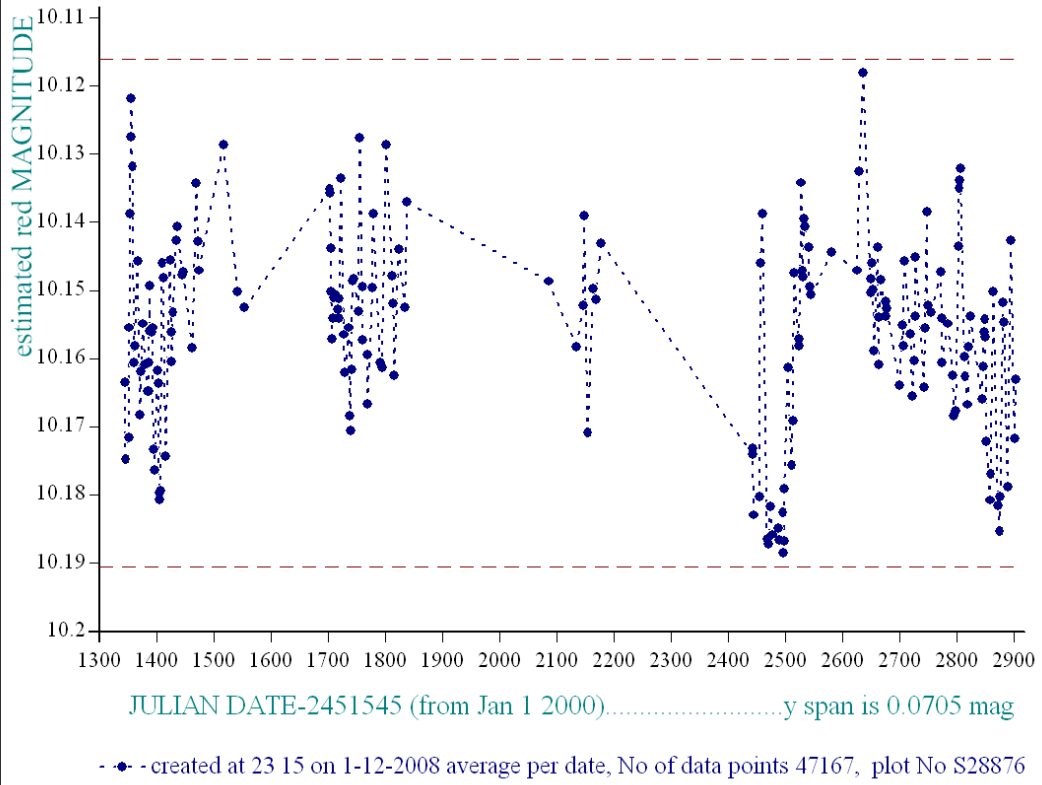
season 6: dates 2930 to 3266 is 9/1/2008 to 10/12/2008 (u)

season 7: dates 3403 to 3539 is 26/4/2009 to 10/9/2009 (t)

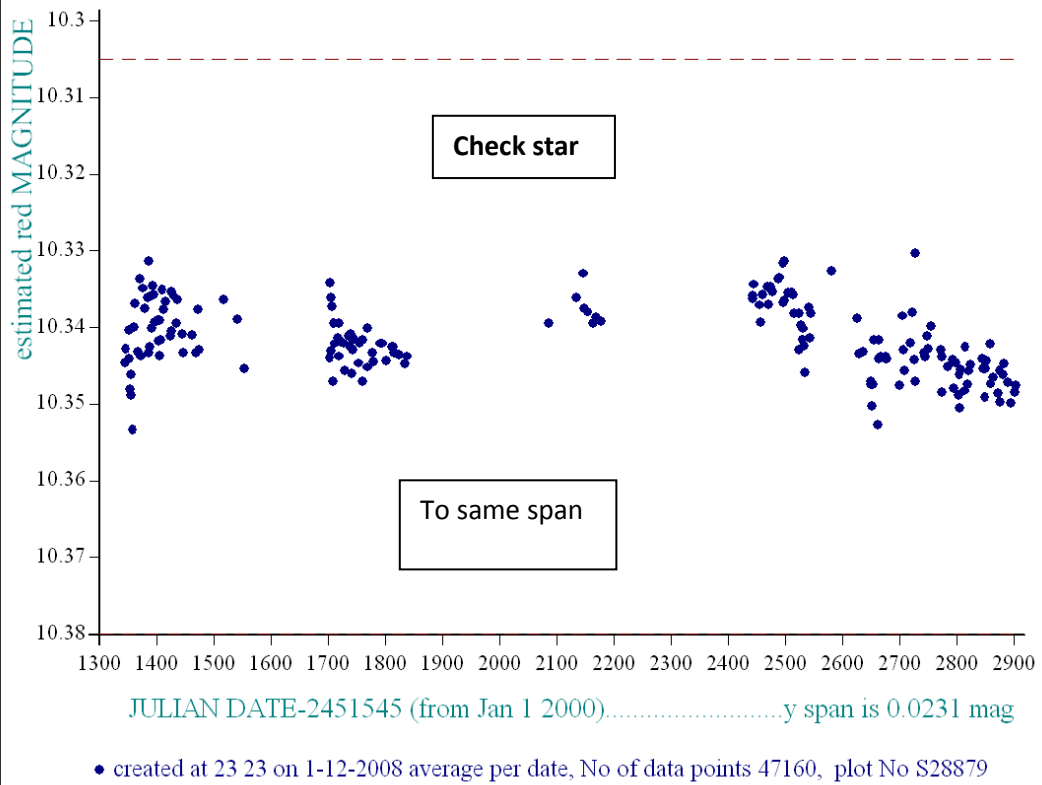


a00448 is slightly var in fact, ref a01235 below is better

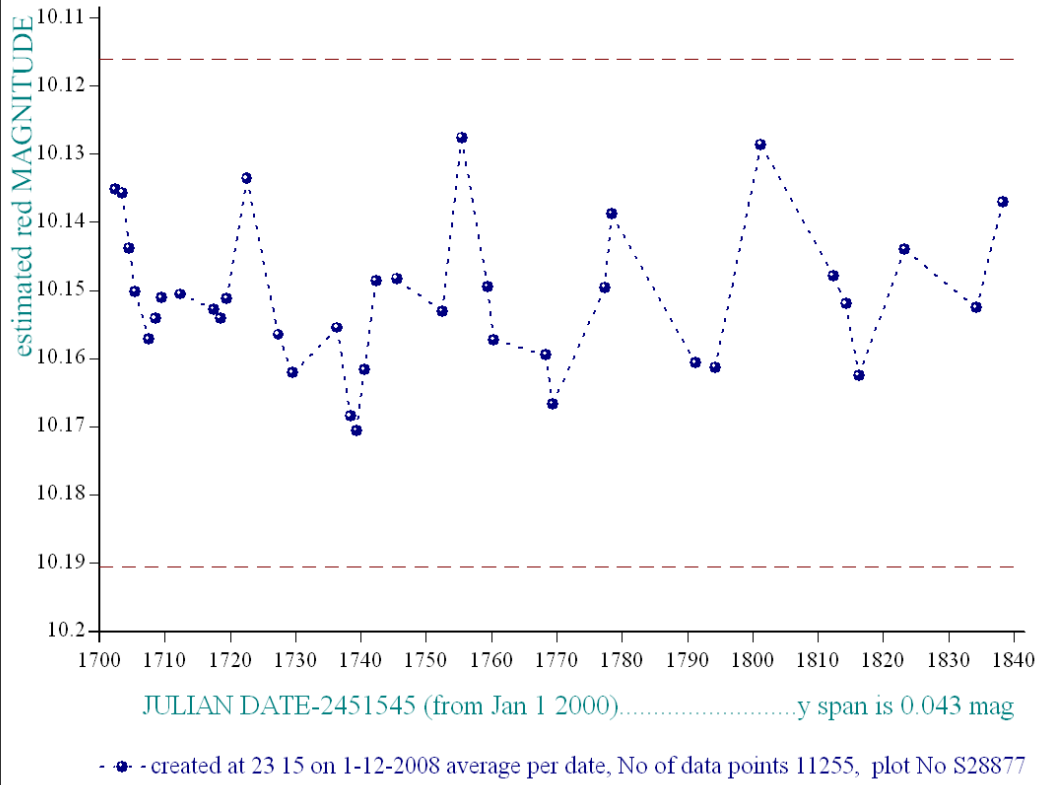
star a00418, refstar a01235 dia 10



star a00518, refstar a01235 dia 10



star a00418, refstar a01235 dia 10



star a00418, refstar a01235 dia 10

