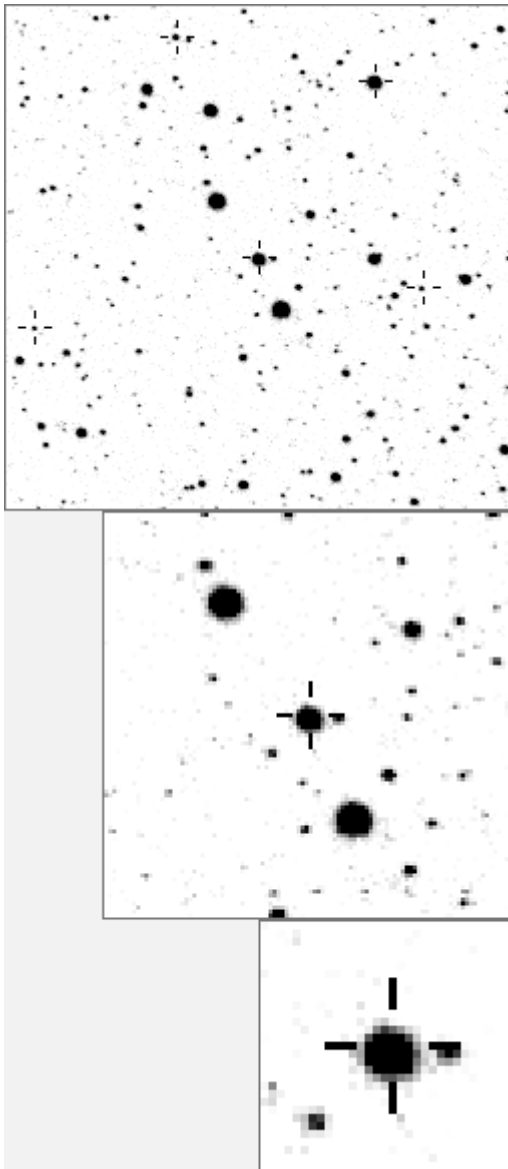


a00510



Variables and brighter stars

. l	O	510	v
.	a	60	
. . . . f c	b	73	
. d	c	288	v
.	d	388	
. b	e	862	
.	f	1054	
. O . . . e	g	1433	
.	h	1721	
n a	i	1932	
.	j	2239	
.	k	2263	
. . h	l	9469	v
.	m	19247	v
. k . j	n	19976	v

.	O	510	v
. . . f l	a	60	
.	b	73	
. . . . b	c	3351	
.	d	5870	
.	e	10284	
.	f	10596	
. O h	g	12048	
. k	h	18324	
.	i	20300	
.	j	20489	
. m . a . . j . .	k	20573	
.	l	20899	
.	m	25777	
. d	n	28457	

Bitmap sizes are 251, 101 and 31 pixels square, South up. The keys to the right refer to the 1st two bitmaps. The numbers in the key are those in my catalogue 'starlistA'

Data and comments on star a00510

SWid: a00510 / **USNO id: 3589 35301** / other id: **TYC 3589 353 1**

Co-ordinates, x,y in image z1051: 3002.3 2532.3

J2000 sky co-ordinates: **21 12 3.98 +46 48 30.59**

CMC r'magnitude and 2MASS J,H,K magnitudes: 10.583 7.668 6.807 6.546

USNO B1.0 magnitudes, B1,R1,B2,R2,I2: 12.55 10.66 11.83 10.59 10.08

Misc comments :

A very low range variable. Two excellent close refs 60 and 73. Magm to 60 is 10.17, magr 0.045, 0.035 in a (to 73 also). Compare close 388/ 73 that is 10mmag in a and 2.9 in 'z'. Star 510 is certainly variable, but not much. A comparison was made to 862, very close to 510 and 60 and that shows much lower movement, see below.

Comparison reference star(s) co-ordinates:

a00060: 21 12 6.61 +46 49 29.38

Reminder: **All dates, JD and HJD are from Jan 1st 2000**

season 1: dates 1316 to 1553 is 9/8/2003 to 3/4/2004 **(a)**

season 2: dates 1696 to 1838 is 23/8/2004 to 12/01/2005 **(z)**

season 3: dates 2085 to 2177 is 16/9/2005 to 17/12/2005 **(y)**

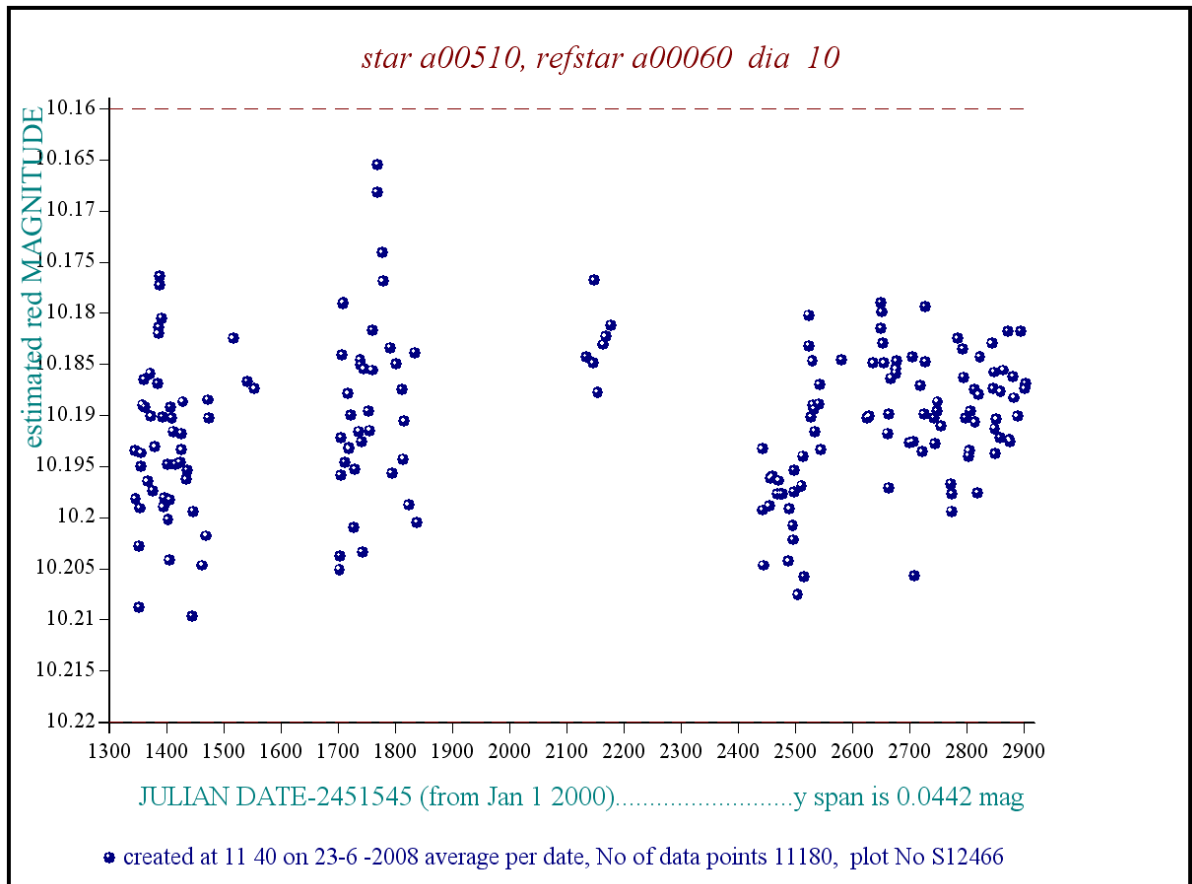
season 4: dates 2442 to 2755 is 8/9/2006 to 19/7/2007 **(w)**

season 5: dates 2772 to 2903 is 4/8/2007 to 13/12/2007 **(v)**

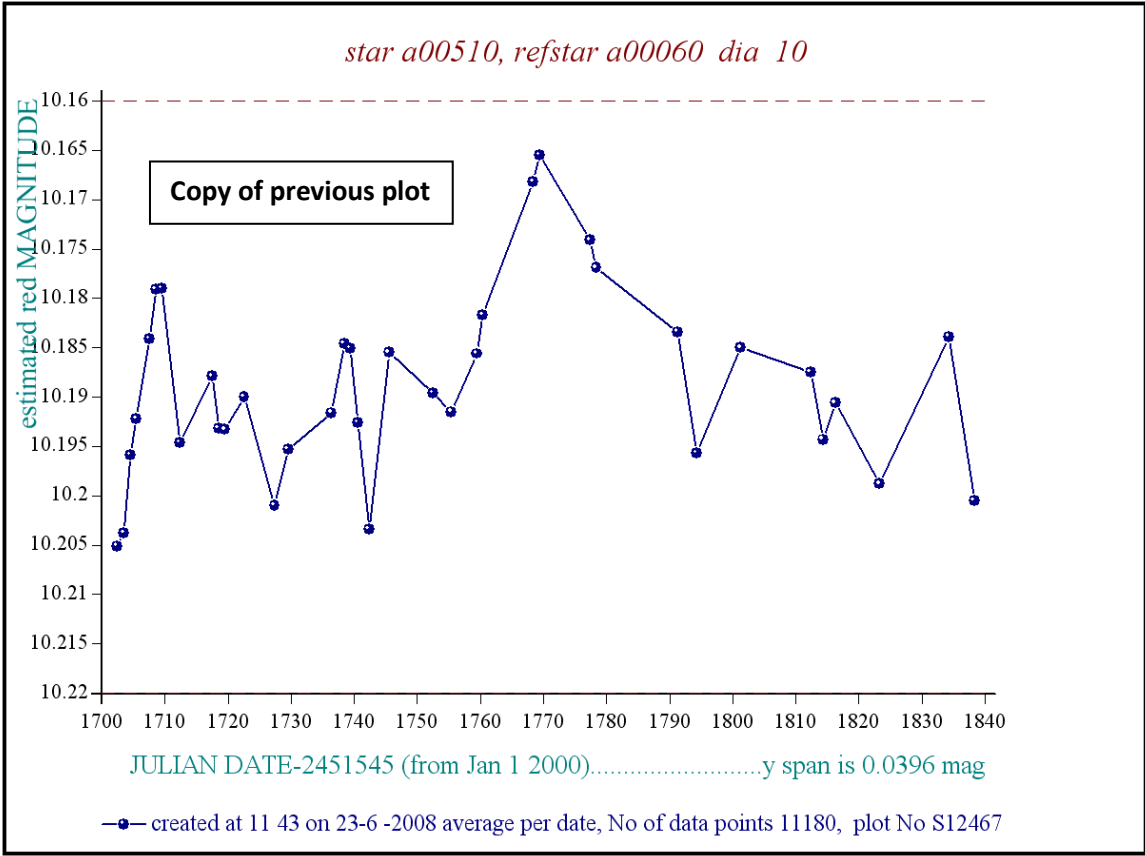
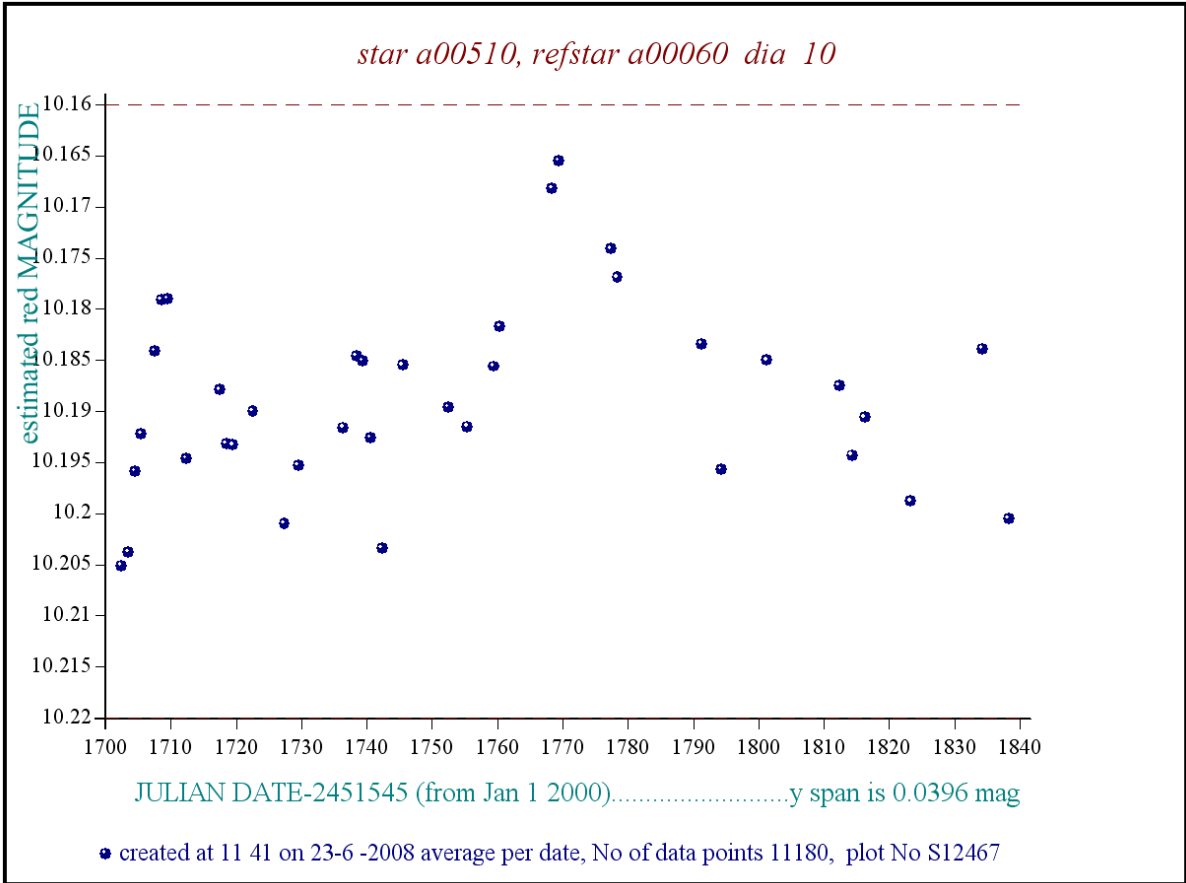
season 6: dates 2930 to 3266 is 9/1/2008 to 10/12/2008 **(u)**

season 7: dates 3403 to 3539 is 26/4/2009 to 10/9/2009 **(t)**

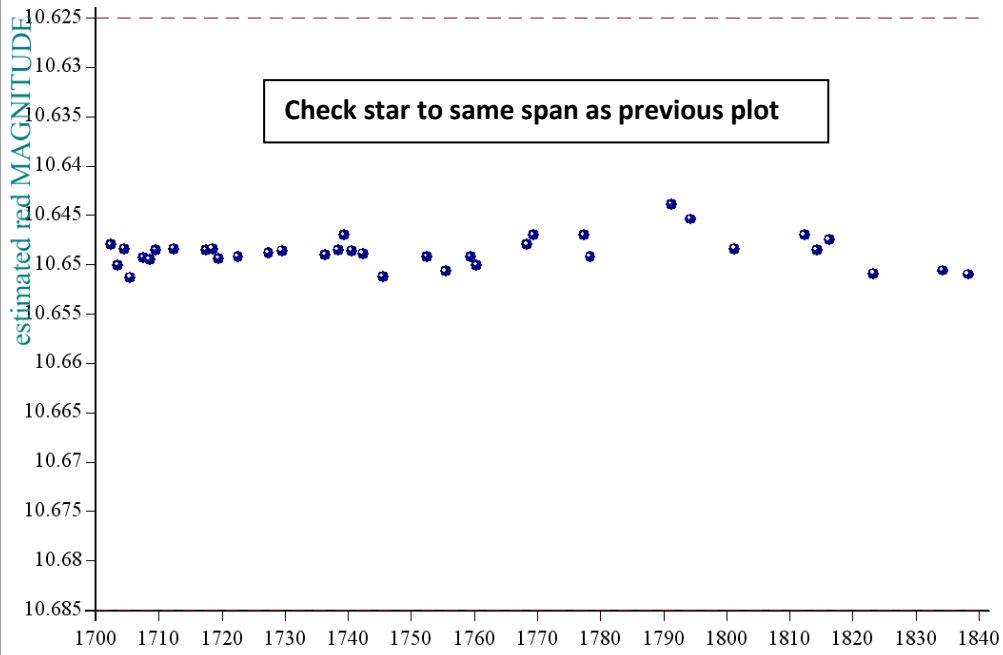
Another low level variable. A comparison is made below with a star (862, e in bm1) close to 510 and of similar brightness, the plots are to the same scale and use same reference star (plots 12467 and 12469)



Both plots below are in a y range of 60mmag



star a00862, refstar a00060 dia 10



JULIAN DATE-2451545 (from Jan 1 2000).....y span is 0.0074 mag

• created at 11 46 on 23-6 -2008 average per date, No of data points 11180, plot No S12469