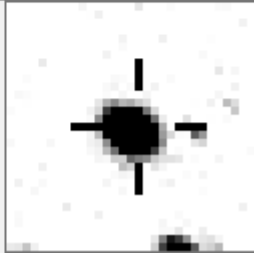
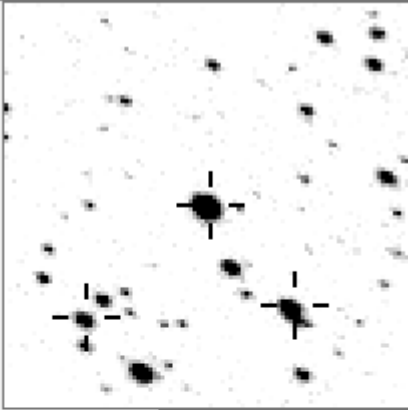
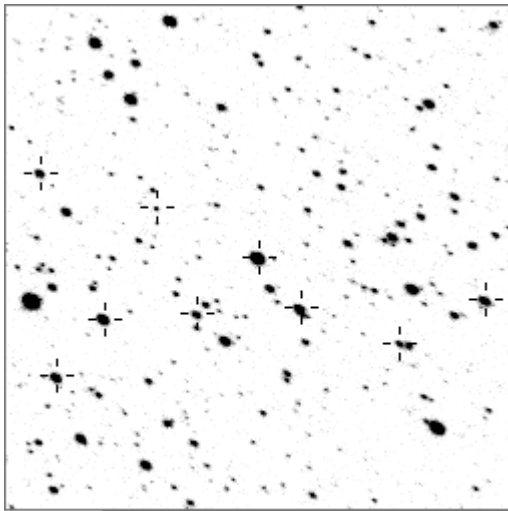


a00564



variables & brighter stars

. c	O	564	v
. . . d	a	105	
. . . . e	b	608	
.	c	985	
.	d	1186	
.	e	1307	
. n	f	1367	v
.	g	2207	v
a O	h	2492	v
. . . f . . . k . . . h	i	2782	v
.	j	3769	v
.	k	5349	v
.	l	9993	v
.	m	12825	v
.	n	17496	v

.	O	564	v
.	h	2057	
.	j	2492	v
.	k	2492	v
.	g	5182	
.	m	5349	v
.	e	7532	
.	f	10443	
.	e	10443	
.	g	11235	
.	O	11235	
.	h	11485	
.	c	12270	
.	i	12270	
.	j	14879	
.	l	14879	
.	f	15351	
.	d	15351	
.	b	15351	
.	l	15608	
.	n	15608	
.	a	16608	
.	i	16608	
.	m	16608	
.	n	17621	

Bitmap sizes are 251, 101 and 31 pixels square, South up.
The keys to the right refer to the 1st two bitmaps. The numbers in the key are those in my catalogue 'starlistA'

Data and comments on star a00564

SWid: a00556 / USNO id: 1356 418273 / other id: GSC 3588-3021

Co-ordinates, x,y in image z1051: 3562.8 2863.8

J2000 sky co-ordinates: 21 14 14.56 +47 1 17.17

CMC r'magnitude and 2MASS J, H, K magnitudes: 10.655 7.462 6.596 6.28

USNO B1.0 magnitudes, B1, R1, B2, R2, I2: 12.68 10.85 11.99 10.79 10.3

Misc comments :

7/7/7 small irreg mover, 50mmag. There is a hint of a period around 14-17days

To ref 985 magm 10.36, magr 0.06. Persistent double dip around 1420

(to diff refs, 105 1307 +vc5182)

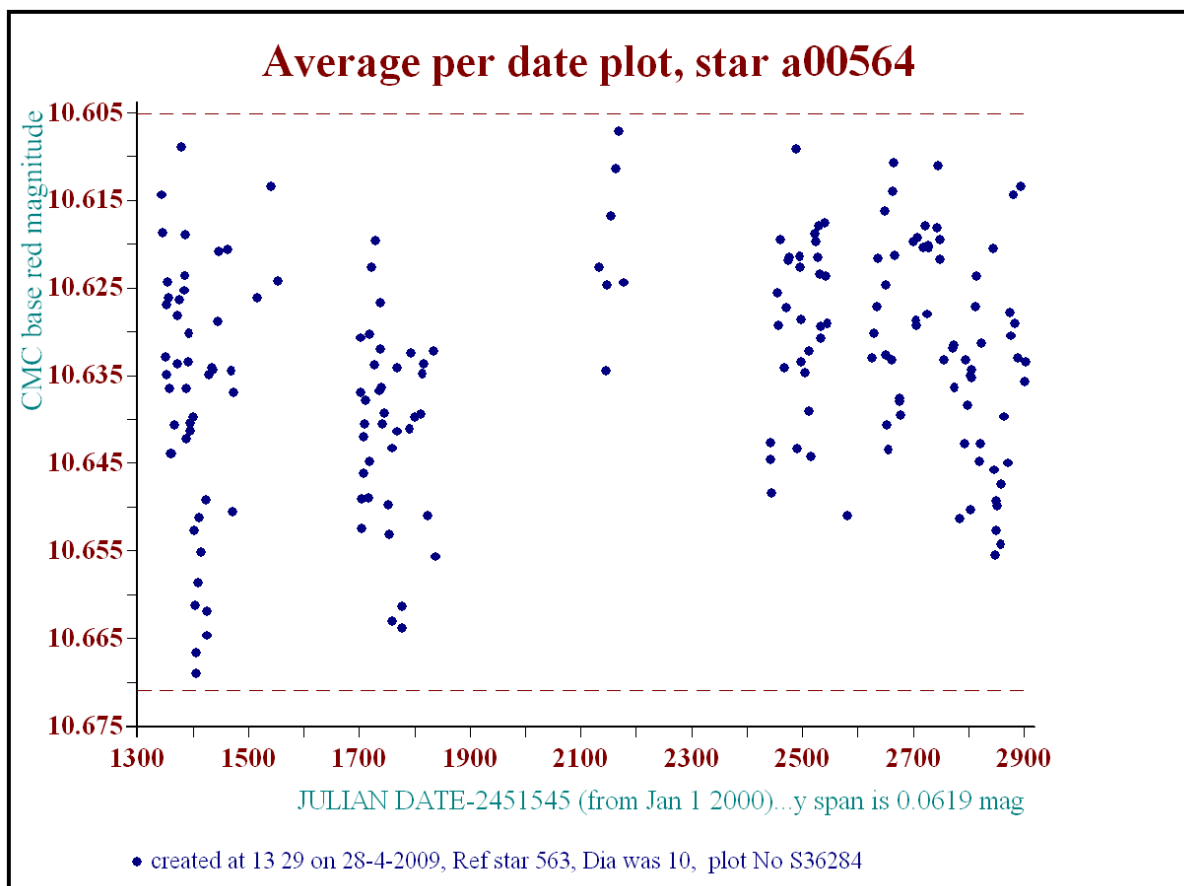
Compare 1186/985 (7.7mmag in z) to 564/985 (53 mmag)(49 to v close 5182)

Or 564/5182 and 608/5182 Nothing in zlongs, just up and down
 No overly.1 to 1 or 1-15 or 15 25 except there is a strange lump at 9 days, nothing.
 Definitely an irregular mover.

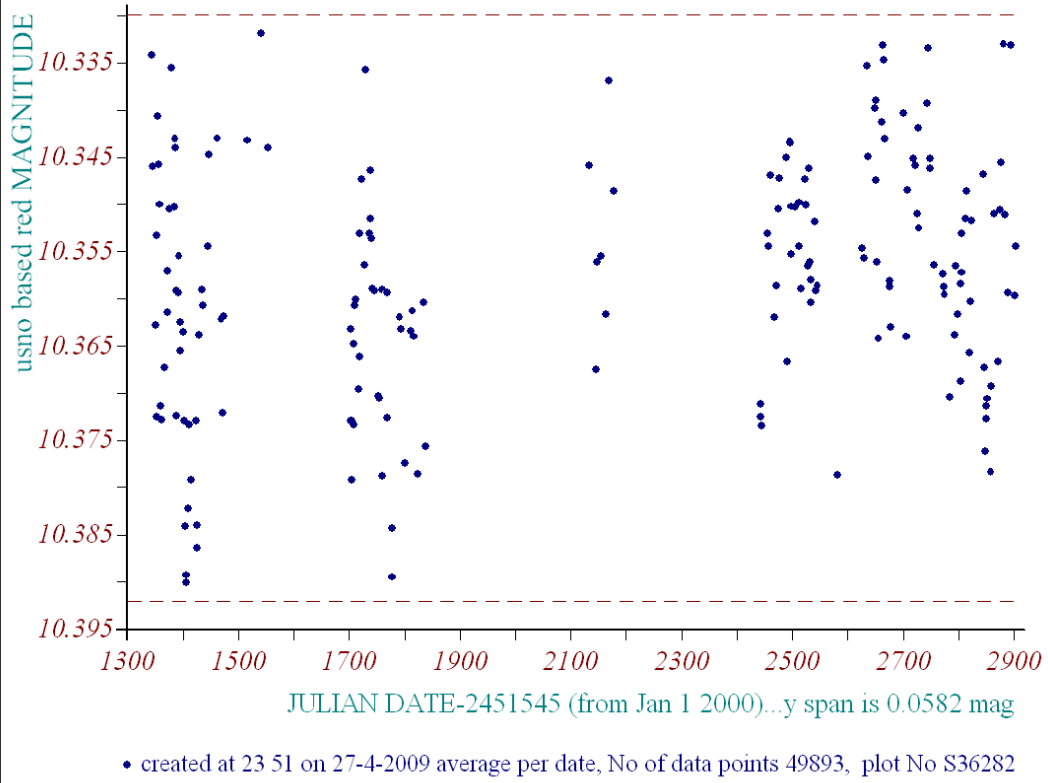
Comparison reference star(s) co-ordinates:

a00563: 21 14 43.36 +47 10 24.93

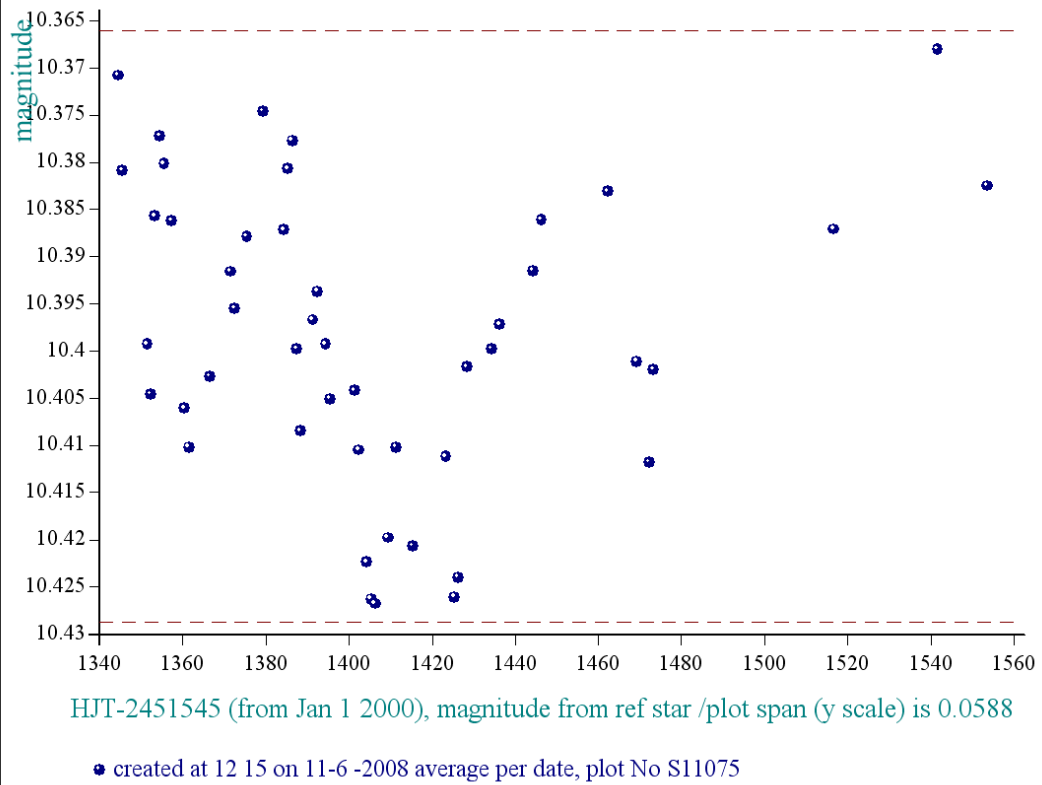
Reminder:
 season 1: dates 1316 to 1553 is 9/8/2003 to 3/4/2004 (a)
 season 2: dates 1696 to 1838 is 23/8/2004 to 12/01/2005 (z)
 season 3: dates 2085 to 2177 is 16/9/2005 to 17/12/2005 (y)
 season 4: dates 2442 to 2755 is 8/9/2006 to 19/7/2007 (w)
 season 5: dates 2772 to 2903 is 4/8/2007 to 13/12/2007 (v)
 season 6: dates 2930 to 3266 is 9/1/2008 to 10/12/2008 (u)
 season 7: dates 3403 to 3539 is 26/4/2009 to 10/9/2009 (t)

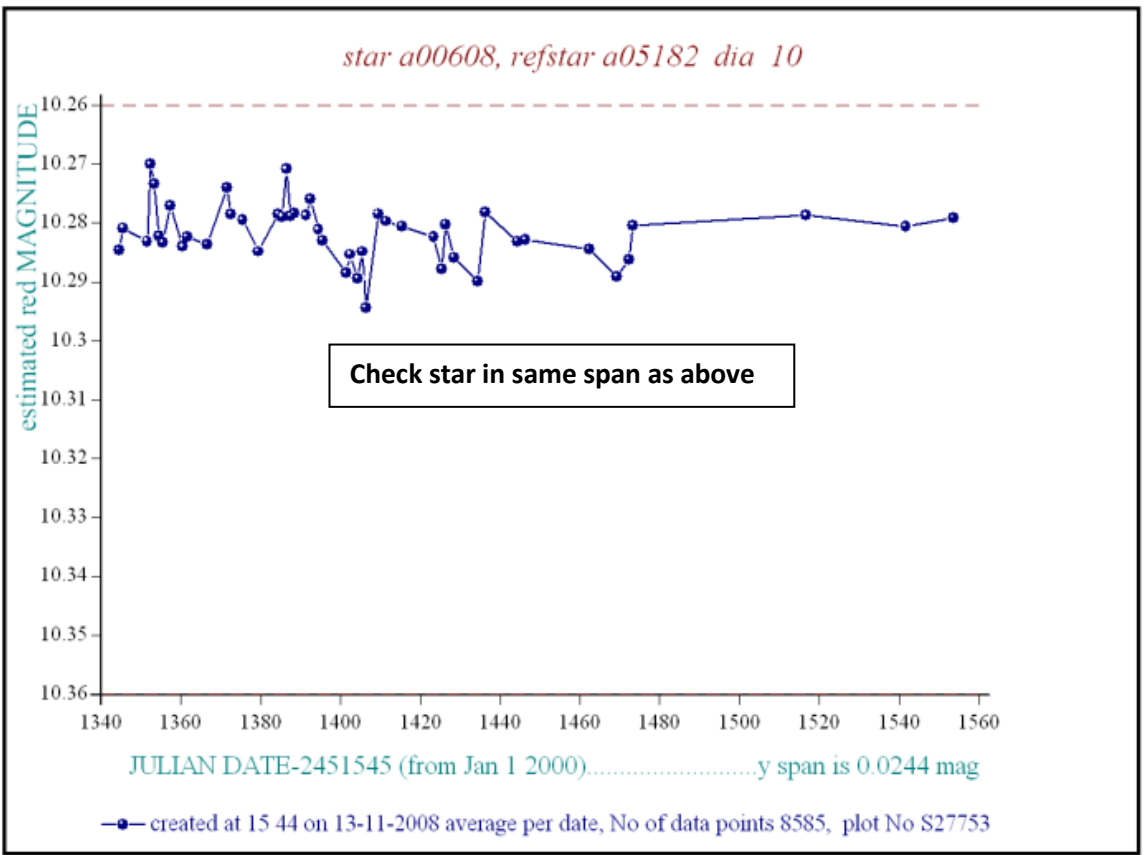
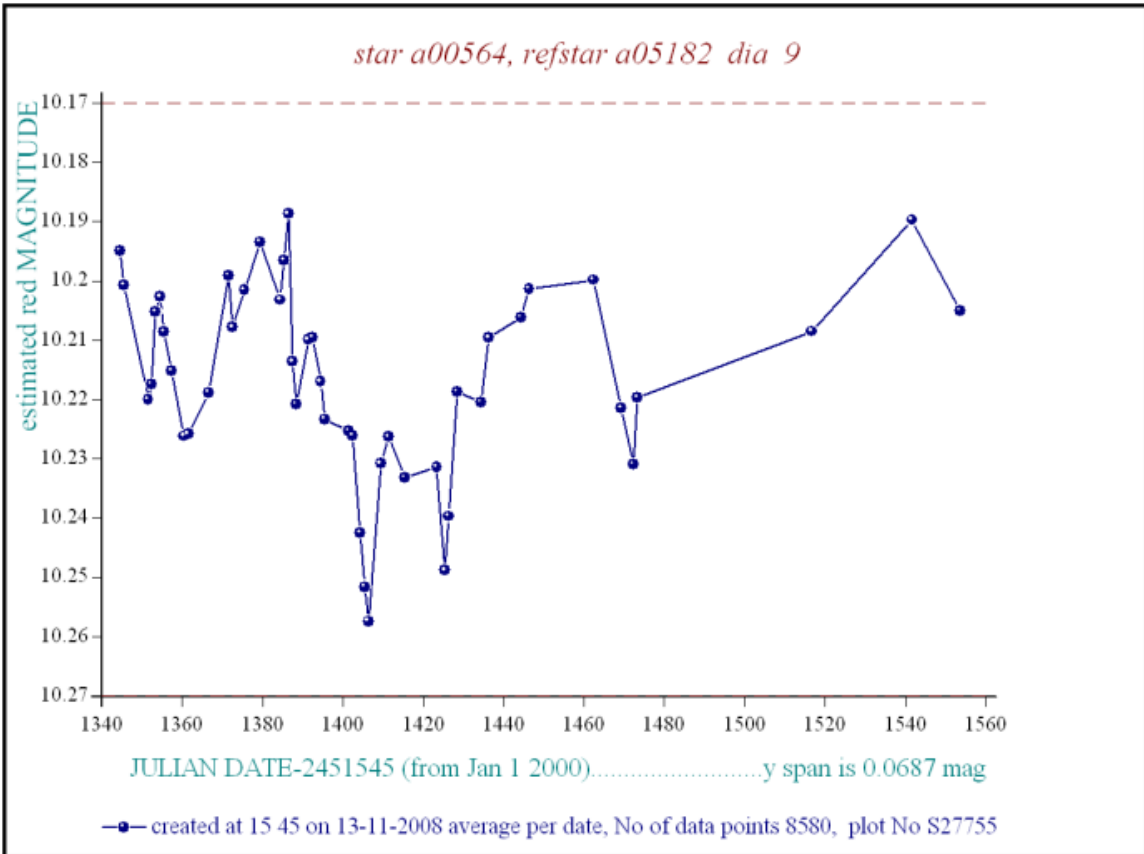


star a00564, refstar a00054 dia 11

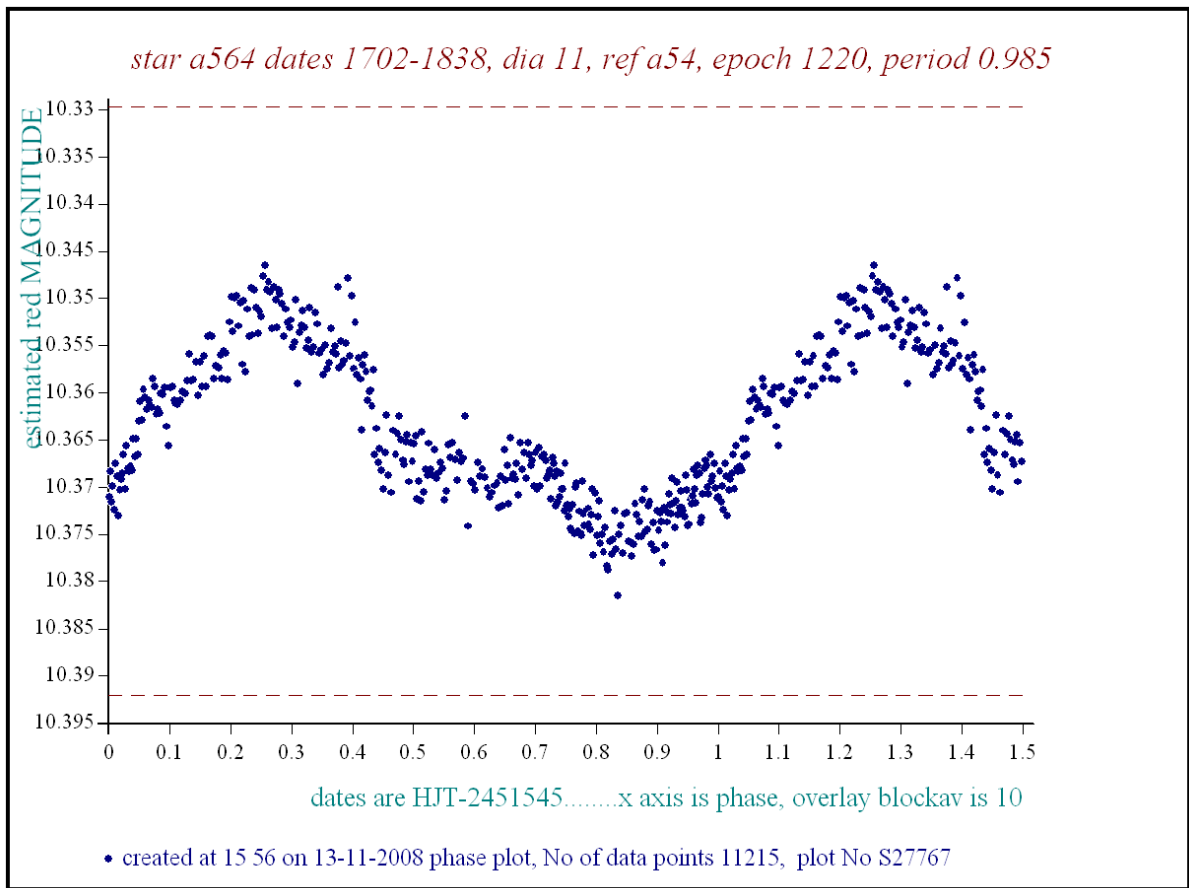


star a00564, refstar a00985 dia is 9





See diary Nov 13th 2008 for this alias



Note for myself:
Alias, not real

See diary Nov 13th
2008 co below
564 54 1220 0.985
1 ~0.15 1.854
2 ~0.345 4.486
3 ~0.316 0.785
4 0.028 2.308
5 ~0.436 13.002