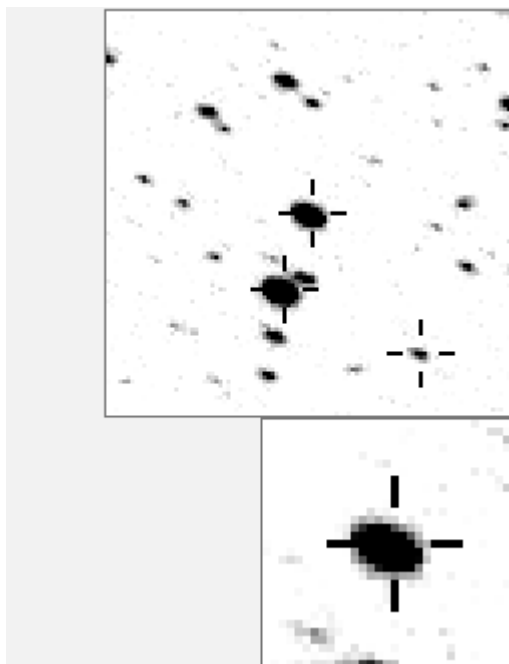


a00600



-----		- -
.	O	600 v
.	a	321 v
. b	b	4831
. . . d . . . h	c	7658
. . . . l n	d	8368
.	e	8445
.	f	11537 v
. . k O j .	g	12754
.	h	15193
. . . . m . e i .	i	15627
. a	j	22208
.	k	22606
. c f . . .	l	23665
. g	m	24107
.	n	25145

Bitmap sizes are 101 and 31 pixels square, South up. The key to the right refers to the top bitmap. The numbers in the key are those in my catalogue 'starlistA'. Stars marked with a cross have been found to be variable.

Data and comments on star a00600

SWid: a00600 / **USNO id: 1368 436113 / other id: GSC 3589-0857**

Co-ordinates, x,y in image z1051: 3956.1 2593

J2000 sky co-ordinates: **21 15 44.15 +46 50 13.68**

CMC r'magnitude and 2MASS J,H,K magnitudes: 10.782 7.334 6.406 6.099

USNO B1.0 magnitudes, B1,R1,B2,R2,I2: 14.07 10.52 13.23 10.52 9.43

Misc comments :

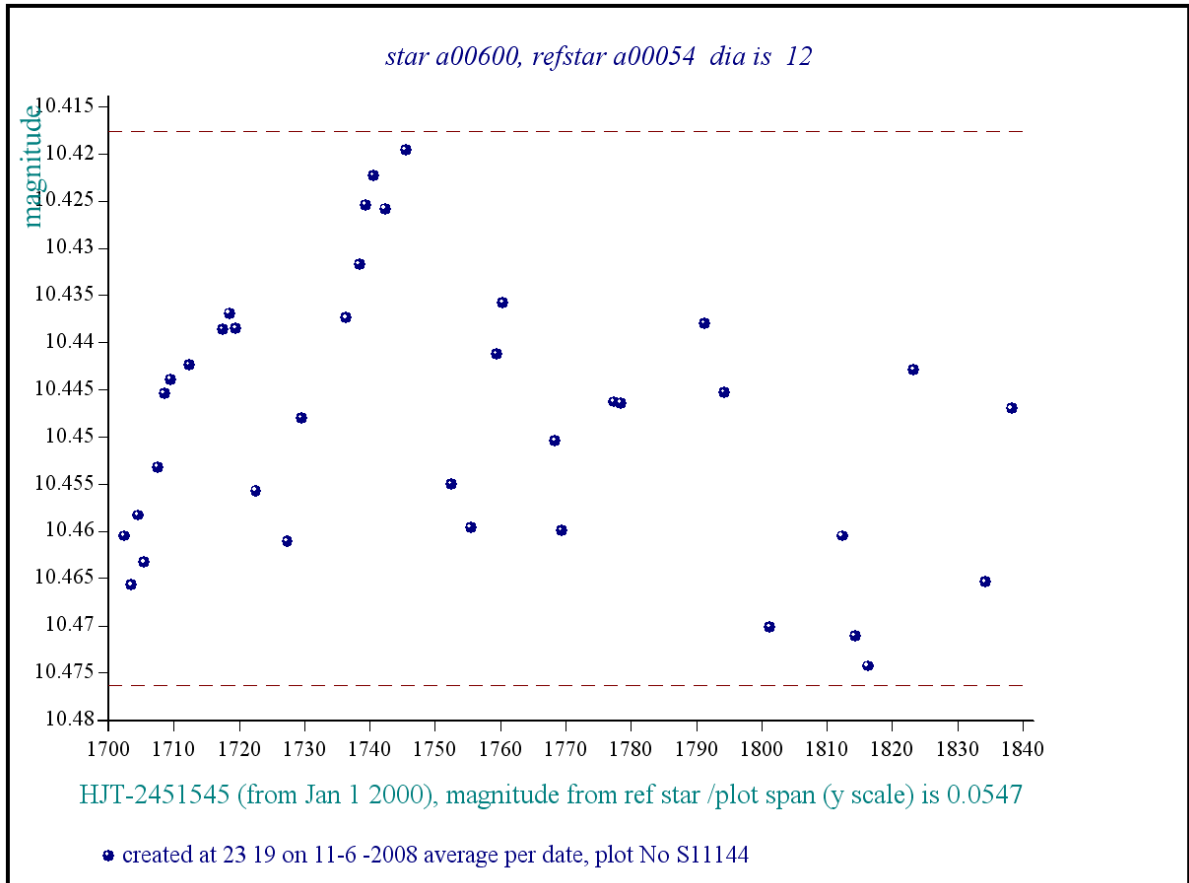
Comparing this edgy star with others near it (21, 22a star 2858/54) it seems clear that it is a weak mpv.

To 54, magm 10.4 magr 0.090

Comparison reference star(s) co-ordinates:

a00054: **21 14 36.8 +46 46 46.1**

Better plots, CMC mags and 2 more years needed



Reminder:

All dates, JD and HJD are from Jan 1st 2000

- season 1: dates 1316 to 1553 is 9/8/2003 to 3/4/2004 **(a)**
- season 2: dates 1696 to 1838 is 23/8/2004 to 12/01/2005 **(z)**
- season 3: dates 2085 to 2177 is 16/9/2005 to 17/12/2005 **(y)**
- season 4: dates 2442 to 2755 is 8/9/2006 to 19/7/2007 **(w)**
- season 5: dates 2772 to 2903 is 4/8/2007 to 13/12/2007 **(v)**
- season 6: dates 2930 to 3266 is 9/1/2008 to 10/12/2008 **(u)**
- season 7: dates 3403 to 3539 is 26/4/2009 to 10/9/2009 **(t)**