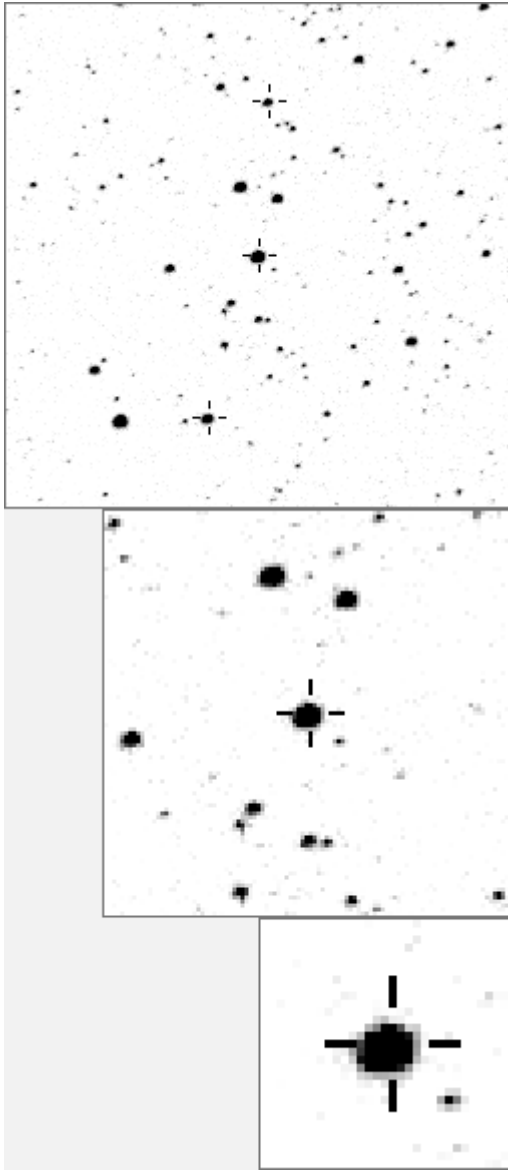


a00650



Variable and brighter stars			
.	.	.	O 650 v
.	.	.	a 463
.	.	.	b 1375
.	.	.	c 1576 v
.	.	.	d 2915
.	.	.	e 3008
.	.	.	f 3639
.	.	.	g 4355
.	.	.	h 5066 v
.	.	.	i 5234
.	.	.	j 5863
.	.	.	k 7260
.	.	.	l 8367
.	.	.	m 8764
.	.	.	n 9403
-----			- -
h	.	.	O 650 v
n	.	.	a 1375
.	.	.	b 3008
.	.	.	c 4355
.	.	.	d 8367
.	.	.	e 10256
.	.	.	f 10886
.	.	.	g 18114
.	.	.	h 18883
.	.	.	i 20289
.	.	.	j 23946
.	.	.	k 24064
.	.	.	l 25630
.	.	.	m 32193
.	.	.	n 34185

Bitmap sizes are 251, 101 and 31 pixels square, South up. The keys to the right refer to the 1st two bitmaps. The numbers in the key are those in my catalogue 'starlistA'

Data and comments on star a00650

SWid: a00650 / **USNO id: 3589 66301 / other id: TYC 3589 663 1**

Co-ordinates, x,y in image z1051: 3133.8 1309

J2000 sky co-ordinates: 21 12 31.19 +45 59 52.69

CMC r'magnitude and 2MASS J,H,K magnitudes: 10.773 9.396 9.233 9.157

USNO B1.0 magnitudes, B1,R1,B2,R2,I2: 11.98 10.39 11.4 10.33 9.9

Misc comments :

Il osc plus **3.7% rise 2003 to 2007**. Careful look: No real evidence of being Il osc, compare 650/238 in z longs which yields:

17 26 19 20 31 20 27, compare to 1375 (85as away)/238: 20 17 16 21 18 30 19

numbers are p-p mmags. The oscs visible are drift/pixel I think

To 238 magm 10.4 magr .076

Q- why is there a weak peak at 0.773 (1.06 s/n) in 2004 and one at 0.776 in 2003?

Comparison reference star(s) co-ordinates:

a00238: 21 11 51.89 +45 54 43.22

a01375: 21 12 29.08 +45 58 30

Two more years needed as further check

Reminder: **All dates, JD and HJD are from Jan 1st 2000**

season 1: dates 1316 to 1553 is 9/8/2003 to 3/4/2004 **(a)**

season 2: dates 1696 to 1838 is 23/8/2004 to 12/01/2005 **(z)**

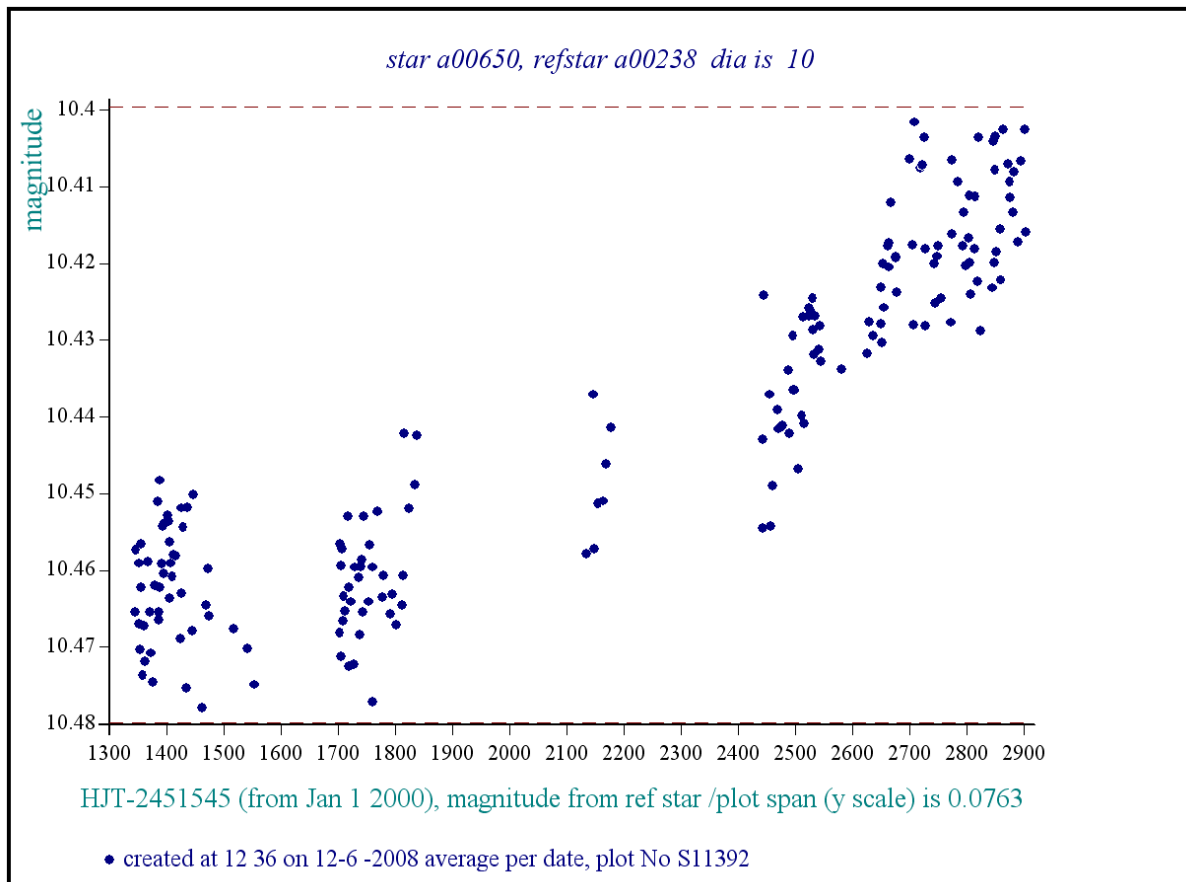
season 3: dates 2085 to 2177 is 16/9/2005 to 17/12/2005 **(y)**

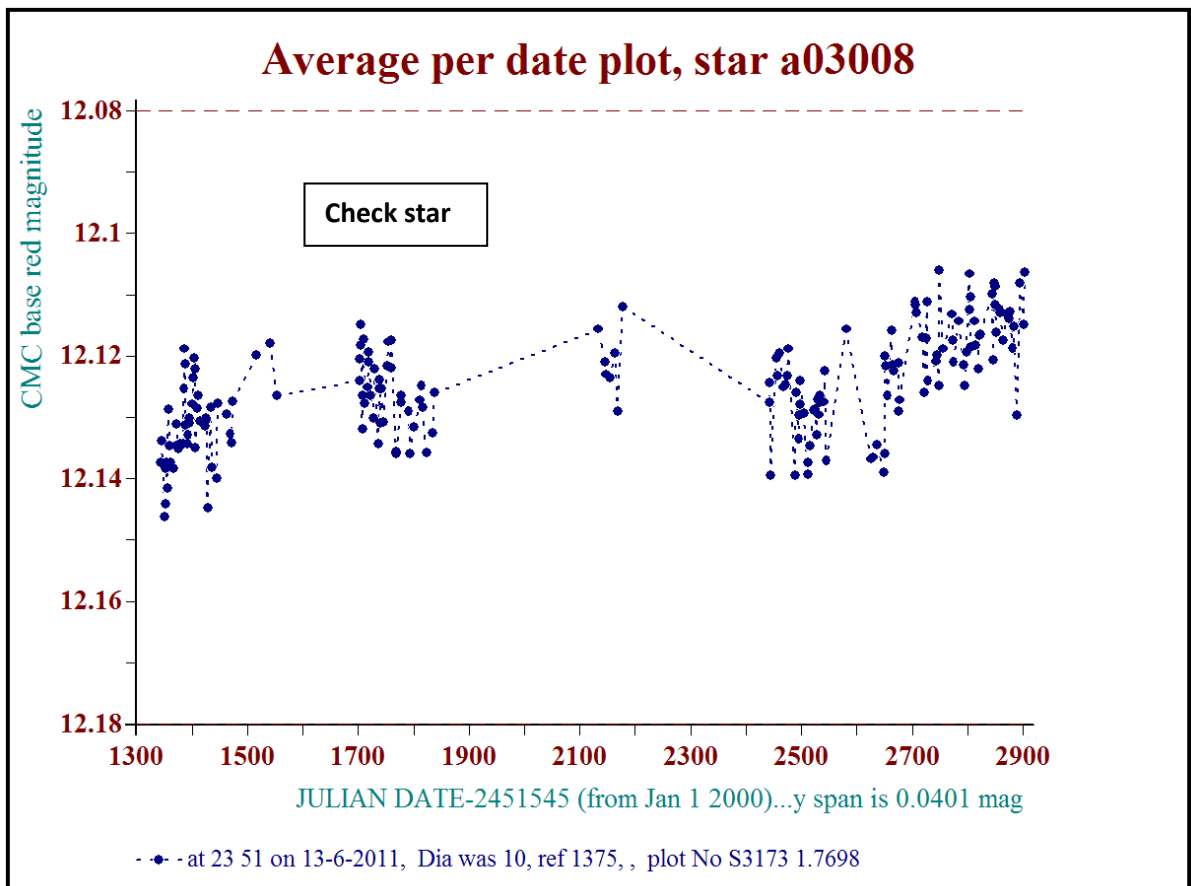
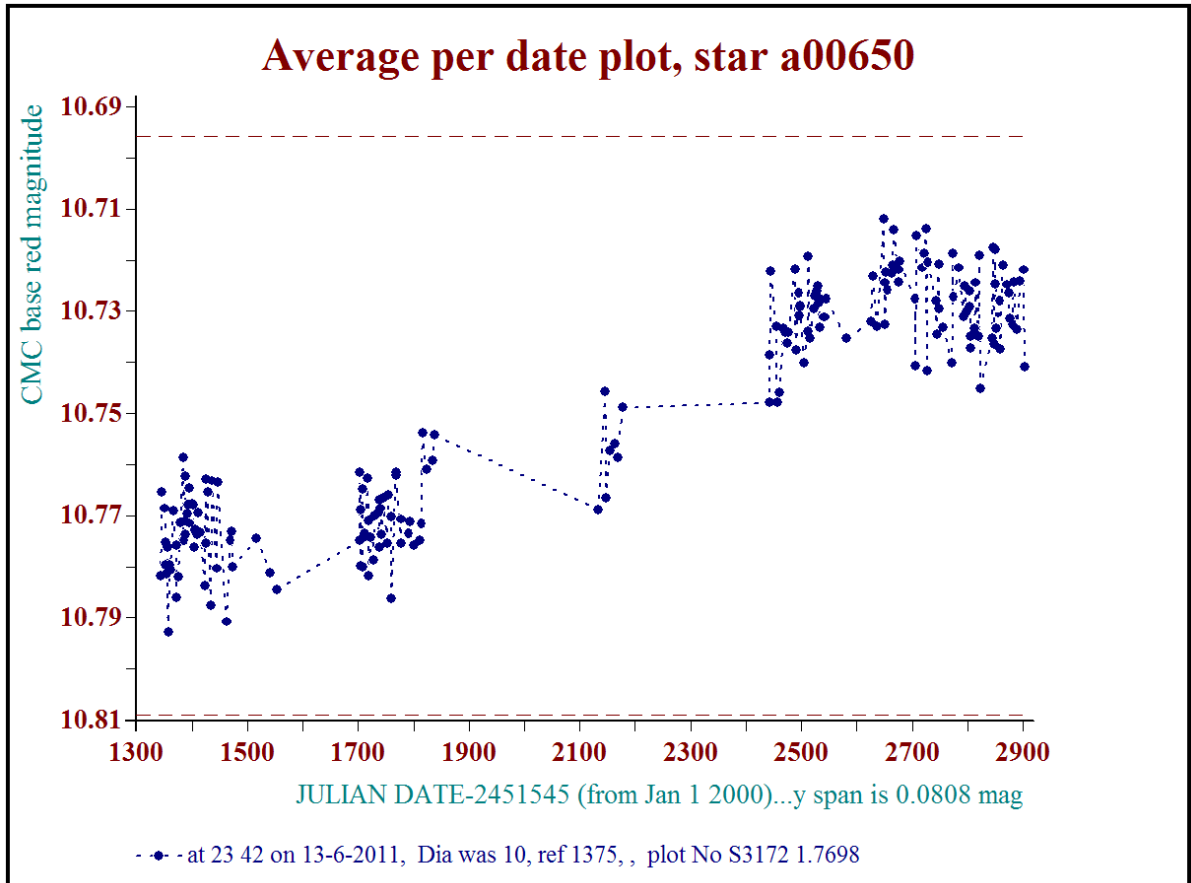
season 4: dates 2442 to 2755 is 8/9/2006 to 19/7/2007 **(w)**

season 5: dates 2772 to 2903 is 4/8/2007 to 13/12/2007 **(v)**

season 6: dates 2930 to 3266 is 9/1/2008 to 10/12/2008 **(u)**

season 7: dates 3403 to 3539 is 26/4/2009 to 10/9/2009 **(t)**





For comparison- movement about 5mmag compared to 50 above