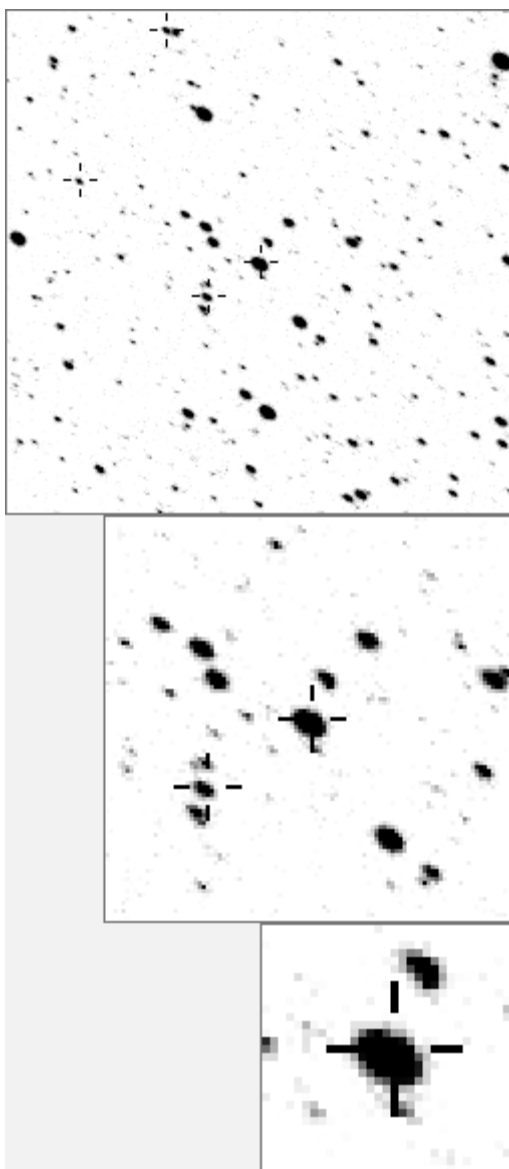


a00670



Variable and brighter stars

. m	O	670	v
.	a	116	
.	b	563	
. c	c	608	
.	d	732	
. n	e	1217	
d g j	f	2833	
.	g	3015	
. l	h	3143	
.	i	3250	
.	j	3294	
.	k	3350	
. h . b	l	5838	v
.	m	9993	v
. k	n	12825	v

.	O	670	v
.	a	1217	
.	b	3015	
.	c	3294	
n . g b e	d	3425	
.	e	4304	
. d	f	5838	v
.	g	7423	
.	h	7722	
. l j	i	7730	
. k	j	9861	
.	k	10201	
.	l	16915	
.	m	18959	
.	n	26370	

Bitmap sizes are 251, 101 and 31 pixels square, South up. The keys to the right refer to the 1st two bitmaps. The numbers in the key are those in my catalogue 'starlistA'

Data and comments on star a00670

SWid: a00670 / **USNO id: 3593 272601 / other id:**

Co-ordinates, x,y in image z1051: 3680 3023.3

J2000 sky co-ordinates: 21 14 42.18 +47 7 29.33

CMC r'magnitude and 2MASS J,H,K magnitudes: 10.81 7.577 6.705 6.42

USNO B1.0 magnitudes, B1,R1,B2,R2,I2: 12.89 11.38 12.35 11.32 10.9

Misc comments :

Look at this, could be var, noisy. Four likely refs, 563, 116 608 732. To 563 it moves 0.090 with erratic dips. Very similar to refs 608(.086) and 732 (.093), bit more to 116 at 0.114

Certainly variable

Comparison reference star(s) co-ordinates:

a00608: 21 14 35.57 +47 4 33.61

More plots, more years and CMC mags needed

Reminder: **All dates, JD and HJD are from Jan 1st 2000**

season 1: dates 1316 to 1553 is 9/8/2003 to 3/4/2004	(a)
season 2: dates 1696 to 1838 is 23/8/2004 to 12/01/2005	(z)
season 3: dates 2085 to 2177 is 16/9/2005 to 17/12/2005	(y)
season 4: dates 2442 to 2755 is 8/9/2006 to 19/7/2007	(w)
season 5: dates 2772 to 2903 is 4/8/2007 to 13/12/2007	(v)
season 6: dates 2930 to 3266 is 9/1/2008 to 10/12/2008	(u)
season 7: dates 3403 to 3539 is 26/4/2009 to 10/9/2009	(t)

