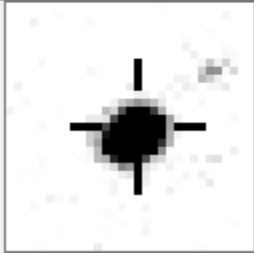
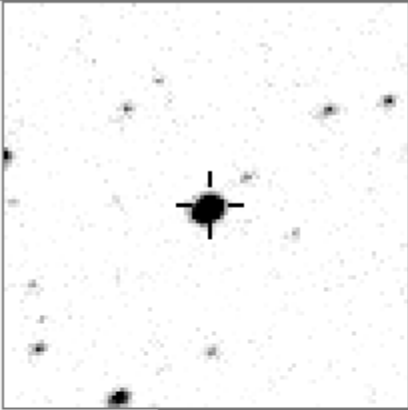
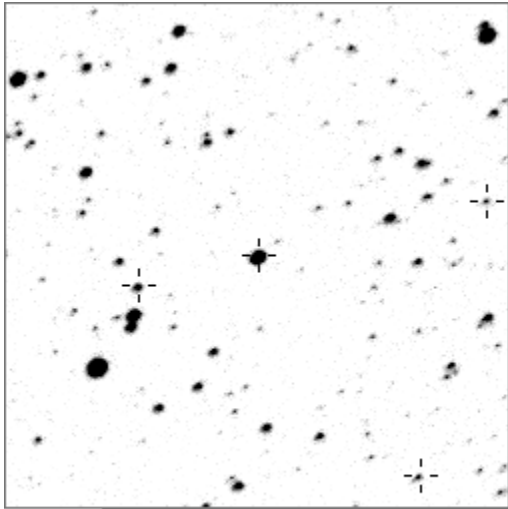


a00876



variables & brighter stars			
. e j	O	876	v
. i	a	112	
c	b	843	
.	c	931	
.	d	1477	
. . f n	e	3192	
. h . . .	f	3325	
. O	g	3620	
. . . l	h	4685	
. . . g k	i	5010	
. . a	j	5127	
.	k	5466	
.	l	7435	v
.	m	16826	v
. m . . .	n	17387	v

.	O	876	v
.	a	8256	
. j	b	23770	
. e b	c	27777	
. c	d	31026	
.	e	33681	
. h	f	35056	
i O	g	41088	
. k	h	41253	
.	i	48569	
.	j	57932	
. l	k	62730	
. d f	l	66126	
.			
. a			

Bitmap sizes are 251, 101 and 31 pixels square, South up. The keys to the right refer to the 1st two bitmaps. The numbers in the key are those in my catalogue 'starlistA'. Stars marked with a cross have been found to be variable.

Data and comments on star a00876

SWid: a00876 / **USNO id: 3589 435101 / other id:**

Co-ordinates, x,y in image z1051: 3370.2 457.9

J2000 sky co-ordinates: 21 13 21.65 +45 26 8.21

CMC r'magnitude and 2MASS J,H,K magnitudes: 10.961 10.422 10.369 10.323

USNO B1.0 magnitudes, B1,R1,B2,R2,I2: 11.06 10.78 10.96 10.77 10.69

Misc comments : This is an interesting star as only one eclipsing-binary looking event (a definite eb looking dip of 8% in date 1361) was caught in the 5 years of data as shown below, but nothing else except a movement in 2488 and possible slight ones in 1428 2865. The depth of the min is 85mmag. I need to search in years 6 and 7. To Ref 488 magm 10.78 magr 0.085

Comparison reference star(s) co-ordinates:

a00488: 21 13 53.92 +45 27 45.43

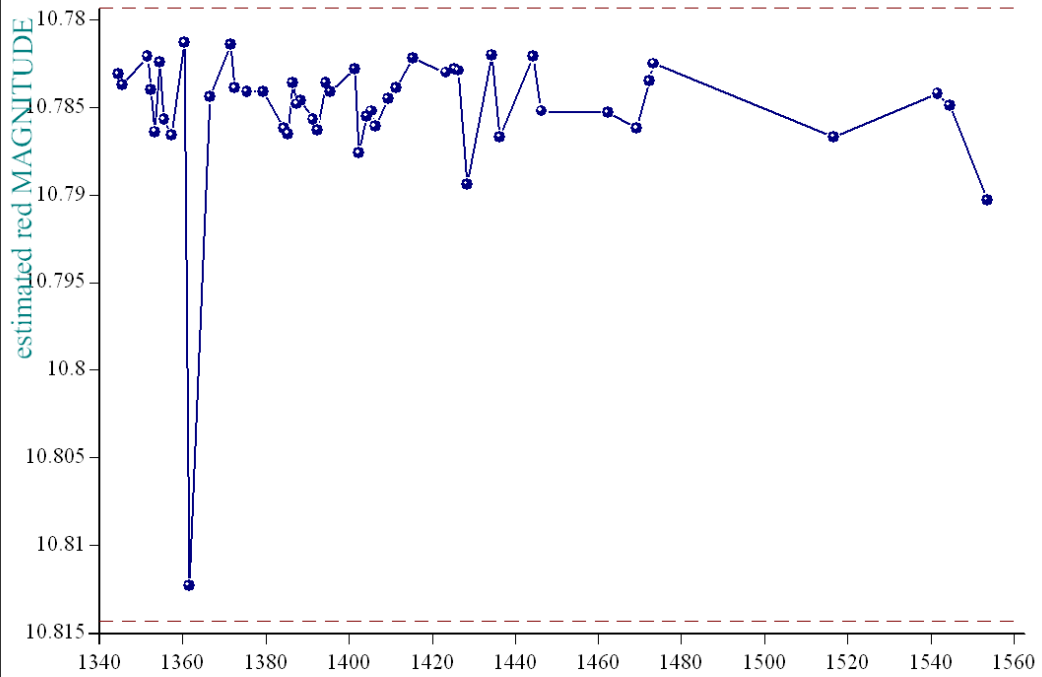
I need more plots (the other movements mentioned) and to check 2008 and 2009 data plus CMC mags

{{big astep corrected by Sc 0.411 12452 to 0.421 11304}} **Te 11304 deg K**

Reminder:

season 1: dates 1316 to 1553 is 9/8/2003 to 3/4/2004	(a)
season 2: dates 1696 to 1838 is 23/8/2004 to 12/01/2005	(z)
season 3: dates 2085 to 2177 is 16/9/2005 to 17/12/2005	(y)
season 4: dates 2442 to 2755 is 8/9/2006 to 19/7/2007	(w)
season 5: dates 2772 to 2903 is 4/8/2007 to 13/12/2007	(v)
season 6: dates 2930 to 3266 is 9/1/2008 to 10/12/2008	(u)
season 7: dates 3403 to 3539 is 26/4/2009 to 10/9/2009	(t)

star a00876, refstar a00488 dia 12



JULIAN DATE-2451545 (from Jan 1 2000).....y span is 0.031 mag

—●— created at 15 0 on 28-12-2008 average per date, No of data points 9474, plot No S29878

