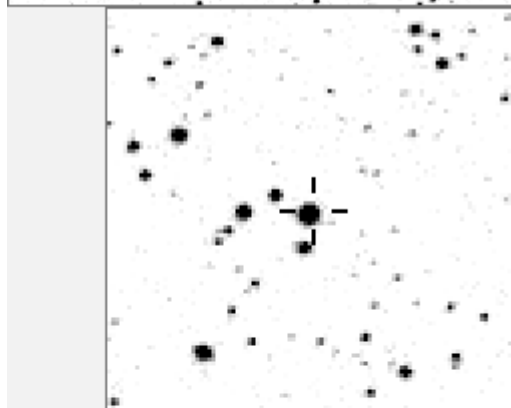
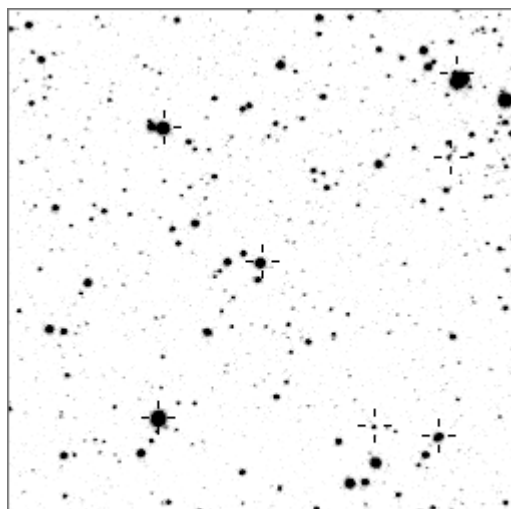


a01195



variables & brighter stars						
.	.	.	n	O	1195	v
.	.	.	.	a	102	v
.	.	f	j	b	198	v
.	.	.	.	c	332	v
.	g	.	.	d	1202	
.	.	.	l m	e	1549	
.	.	.	.	f	2522	
.	.	.	.	g	2841	
.	.	O	.	h	2959	
.	h	.	.	i	3073	v
.	.	.	.	j	5875	v
.	.	.	.	k	20007	v
.	.	.	.	l	20467	v
.	a	.	k i	m	20570	v
.	.	.	d	n	21182	v
.	.	.	e	.	.	.
-----				.	.	.
.	.	.	g n	O	1195	v
.	i	.	.	a	4133	
.	.	.	h	b	4151	
.	.	.	.	c	4377	
.	a	.	.	d	9016	
.	j	.	.	e	9241	
.	k	e	.	f	11426	
.	.	c	O	g	11471	
.	.	d	.	h	11820	
.	.	.	.	i	13393	
.	.	.	.	j	14411	
.	.	.	.	k	14861	
.	b	.	m l	l	19562	
.	.	.	f	m	20371	
.	.	.	.	n	20601	

Bitmap sizes are 251, 101 and 31 pixels square, South up. The keys to the right refer to the 1st two bitmaps. The numbers in the key are those in my catalogue 'starlistA'. Stars marked with a cross have been found to be variable.

Data and comments on star a01195

SWid: a01195 / **USNO id: 1369 441234 / other id:**

Co-ordinates, x,y in image z1051: 2521.5 2684.1

J2000 sky co-ordinates: 21 10 12.58 +46 54 41.67

CMC r'magnitude and 2MASS J,H,K magnitudes: 11.343 7.637 6.608 6.285

USNO B1.0 magnitudes, B1,R1,B2,R2,I2: 14.69 10.81 14.59 10.96 9.79

Misc comments :

6-5-08 irreg osc of some kind, periods around 25d in 2003, 17d in 2005

max movement **70mmag** from (to ref 1202) 11.46 to 11.53

b21, p77

Comparison reference star(s) co-ordinates:

a00083: 21 9 31.22 +46 48 45.75

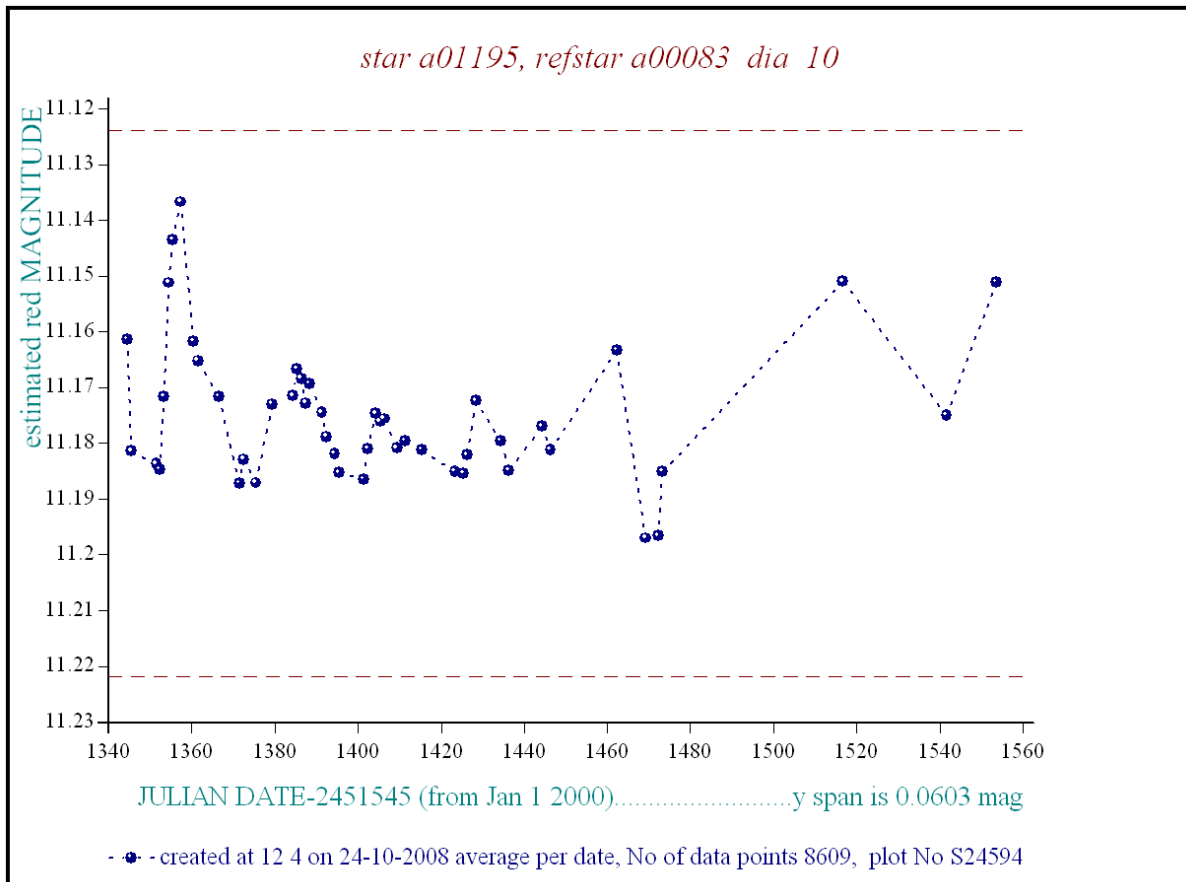
a01202: 21 10 26.07 +46 58 38.32

A low level irregular red variable. Estimated colour temperature 3800K.

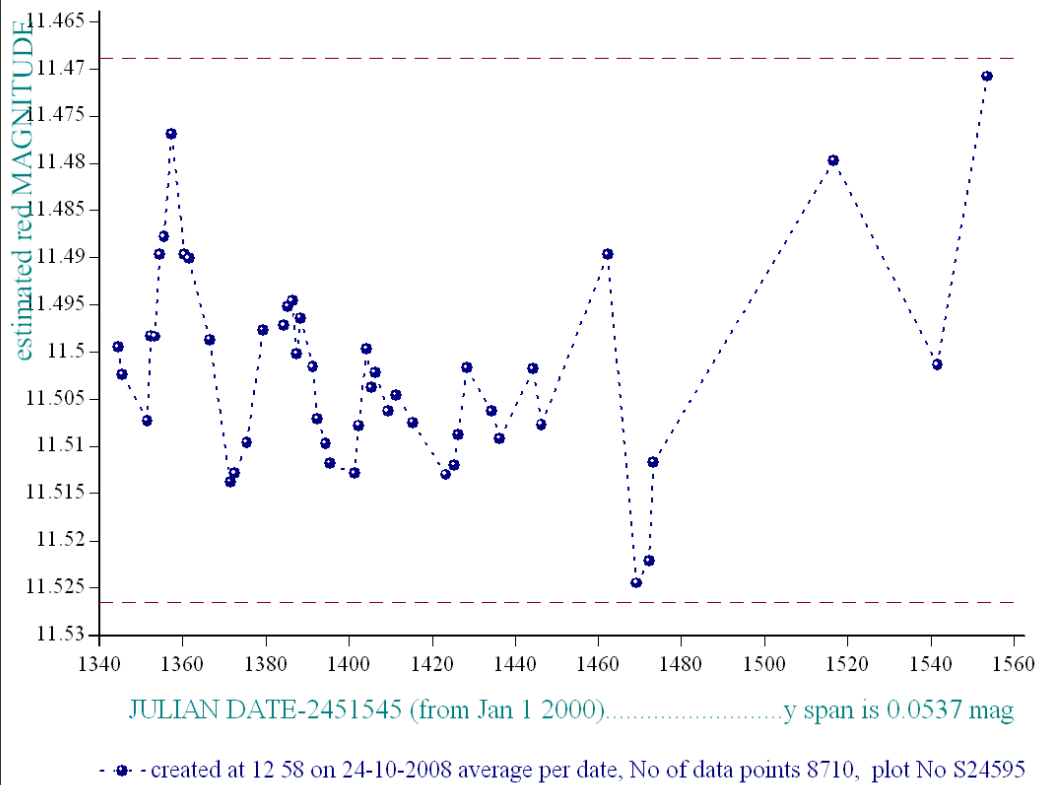
More years need to be added plus CMC mags

Reminder:

- season 1: dates 1316 to 1553 is 9/8/2003 to 3/4/2004 (a)
- season 2: dates 1696 to 1838 is 23/8/2004 to 12/01/2005 (z)
- season 3: dates 2085 to 2177 is 16/9/2005 to 17/12/2005 (y)
- season 4: dates 2442 to 2755 is 8/9/2006 to 19/7/2007 (w)
- season 5: dates 2772 to 2903 is 4/8/2007 to 13/12/2007 (v)
- season 6: dates 2930 to 3266 is 9/1/2008 to 10/12/2008 (u)
- season 7: dates 3403 to 3539 is 26/4/2009 to 10/9/2009 (t)



star a01195, refstar a01202 dia 8



star a01195, refstar a01202 dia 8

