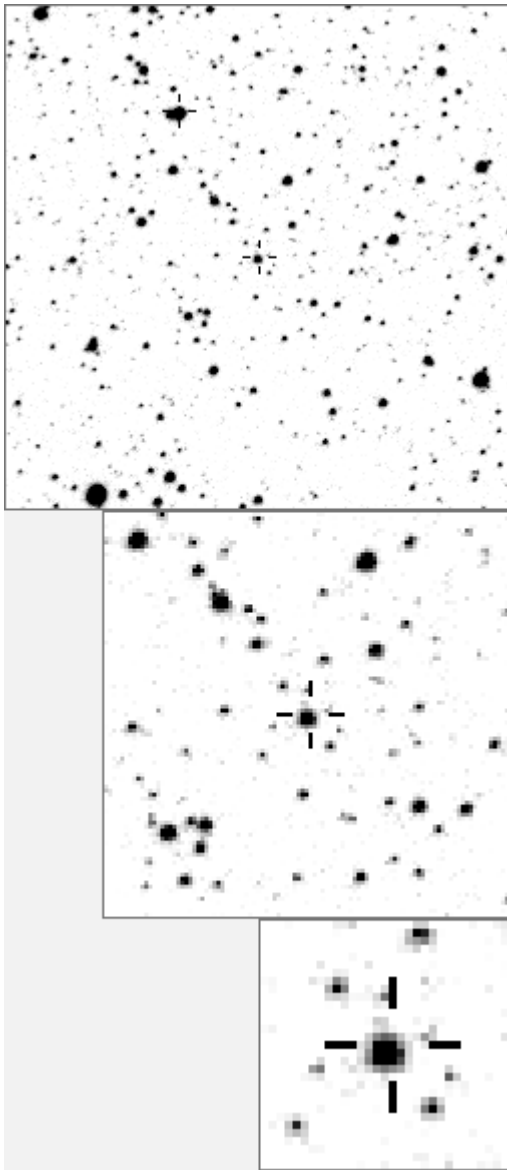


a04548



variable and brighter stars			
. d	O	4548	v
. . . . n k	a	2	v
.	b	196	
. . . . h c	c	487	v
. l e	d	594	
. j	e	800	
. . . . m j g	f	1499	
. O	g	1916	
.	h	2027	
.	i	2190	
. . . . i	j	2421	
.	k	2811	
.	l	3040	
.	m	3056	
. . . . a . f	n	3157	

.	O	4548	v
. . . . b a	a	2421	
. . . . l	b	3040	
. c	c	4017	
. i	d	5190	
. g	e	8019	
.	f	8233	
. O	g	8261	
.	h	10988	
.	i	13935	
. f . h	j	13972	
. . . . d n	k	14243	
. . . . m	l	14455	
. . . . k j	m	15938	
.	n	18097	

Bitmap sizes are 251, 101 and 31 pixels square, South up.
 The keys to the right refer to the 1st two bitmaps. The numbers in the key are those in my catalogue 'starlistA'.
 Stars marked with a cross have been found to be variable.

Data and comments on star a04548

SWid: a04548 / **USNO id: 1370 459975 / other id:**

Co-ordinates, x,y in image z1051: 1534.9 2966.4
J2000 sky co-ordinates: 21 6 22.58 +47 5 48.36
 CMC r'magnitude and 2MASS J,H,K magnitudes: 12.521 10.879 10.361 10.204
 USNO B1.0 magnitudes, B1,R1,B2,R2,I2: 13.37 11.13 13.93 11.45 10.99

Misc comments :

oct 09 mpv with a difference, **marked 46mmag dip in 2003** not much else To To ? 12.17, 46mmag. Tc 4870K look at 3381, a dippy star too!

Comparison reference star(s) co-ordinates: not recorded

More years need to be added plus more careful plots

Reminder:

All dates, JD and HJD are from Jan 1st 2000

season 1: dates 1316 to 1553 is 9/8/2003 to 3/4/2004 (a)

season 2: dates 1696 to 1838 is 23/8/2004 to 12/01/2005 (z)

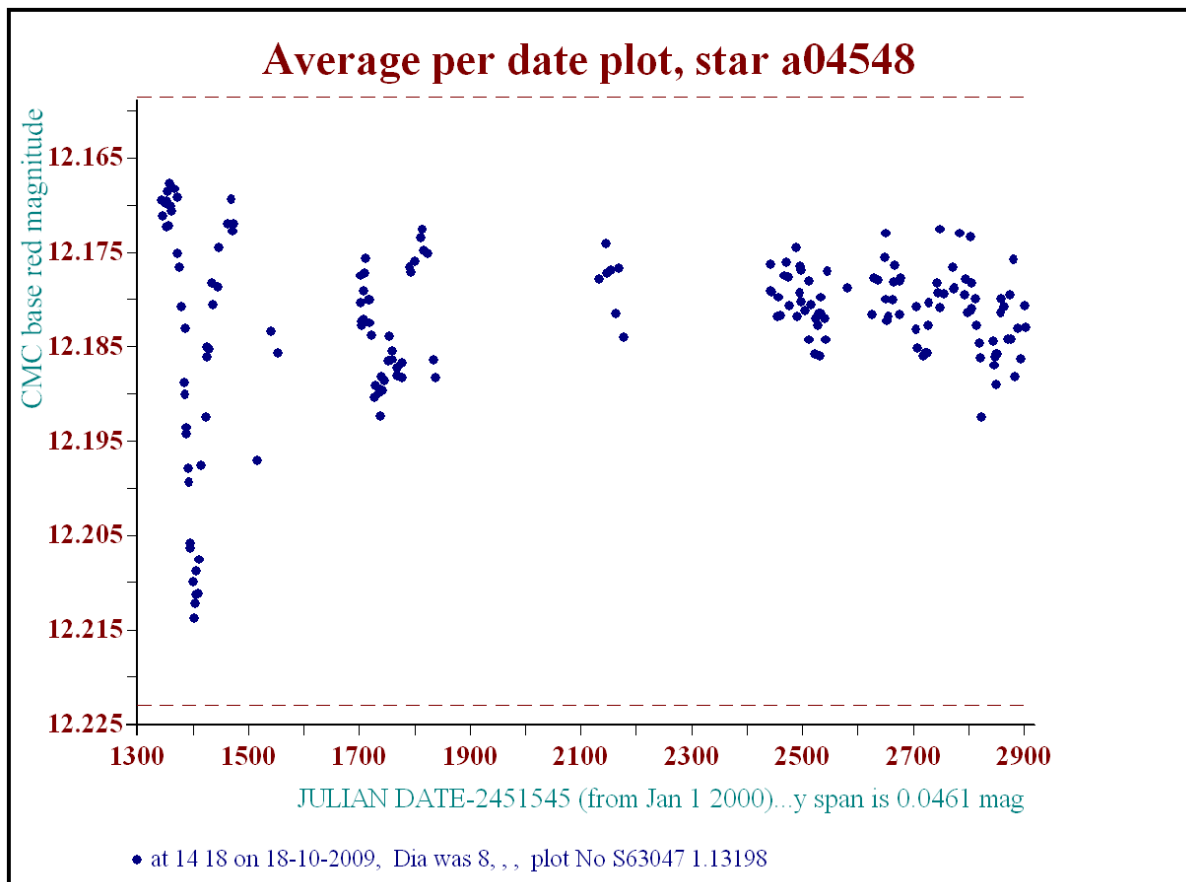
season 3: dates 2085 to 2177 is 16/9/2005 to 17/12/2005 (y)

season 4: dates 2442 to 2755 is 8/9/2006 to 19/7/2007 (w)

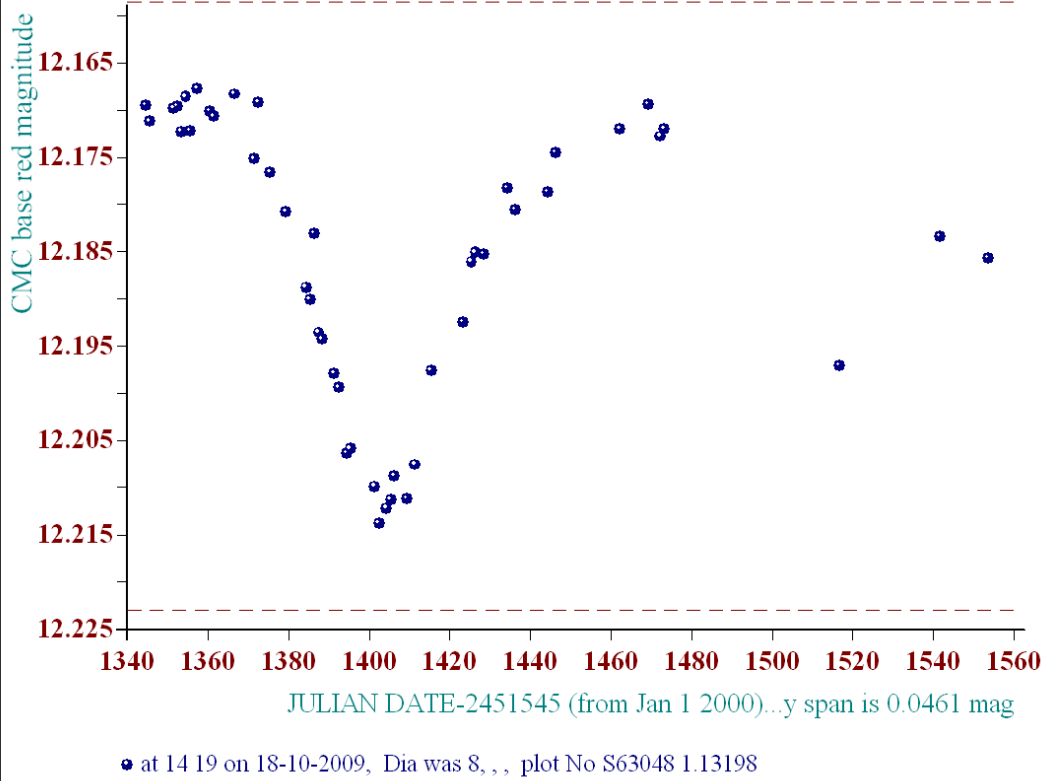
season 5: dates 2772 to 2903 is 4/8/2007 to 13/12/2007 (v)

season 6: dates 2930 to 3266 is 9/1/2008 to 10/12/2008 (u)

season 7: dates 3403 to 3539 is 26/4/2009 to 10/9/2009 (t)



Average per date plot, star a04548



Average per date plot, star a04548

